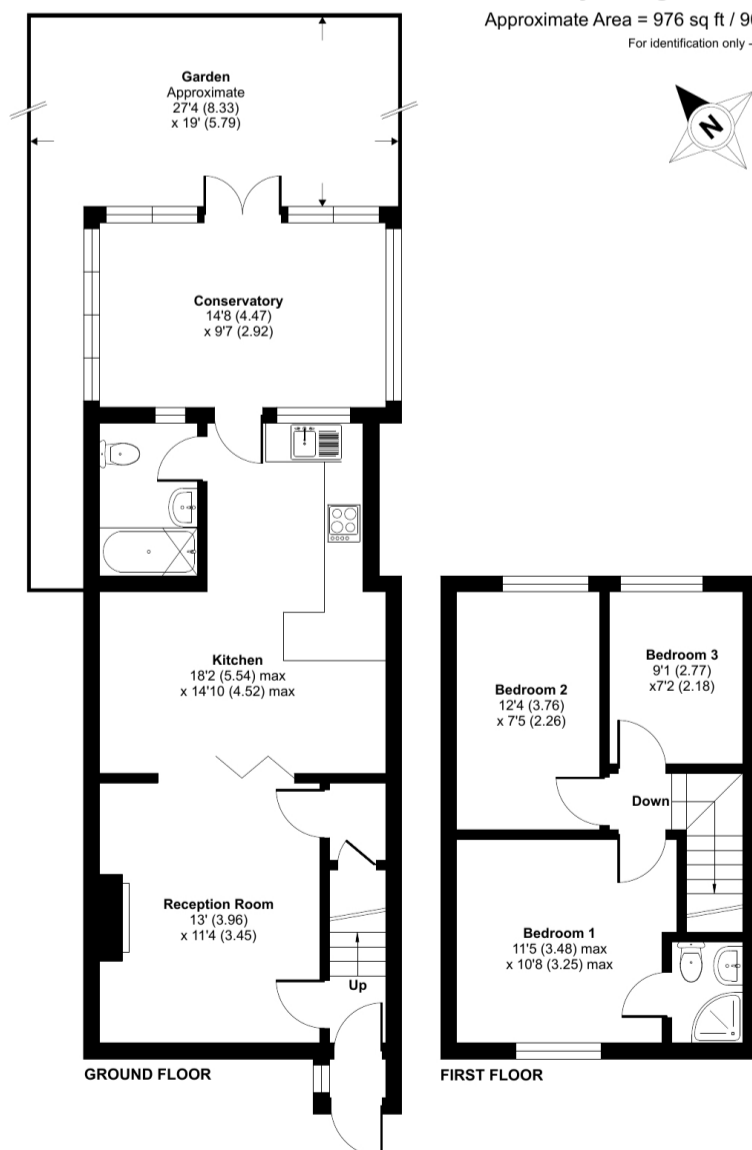




Garden City, Edgware, HA8

Approximate Area = 976 sq ft / 90.6 sq m
 For identification only - Not to scale



Certified Property Measurer
 Floor plan produced in accordance with RICS Property Measurement Standards incorporating International Property Measurement Standards (IPMS2 Residential). © richcom 2023. Produced for Cow & Co Properties Ltd. REF: 987790

Tel: 0208 065 0010
 Email: thehub@cowandco-london.com
 Web: cowandco-london.com

Agents note: All measurements are approximate and whilst every attempt has been made to ensure accuracy they are for general guidance only and must not be relied on. The fixture and fittings referred to have not been tested and therefore no guarantee can be given that they are in working order. Internal photographs are reproduced for general information and it must not be inferred that any item shown is included with the property.

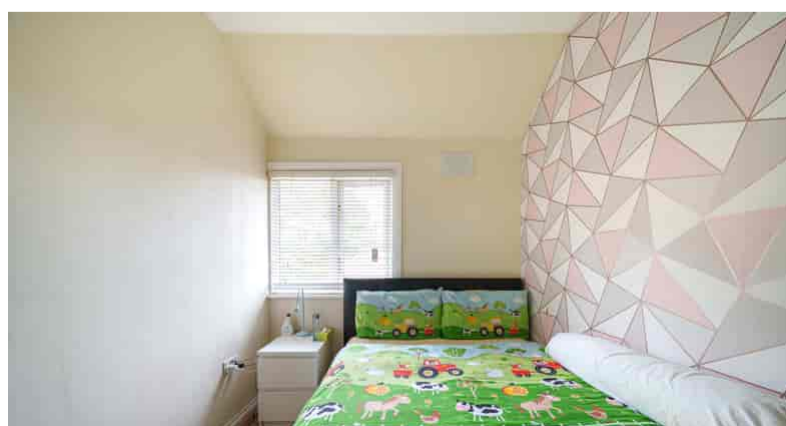
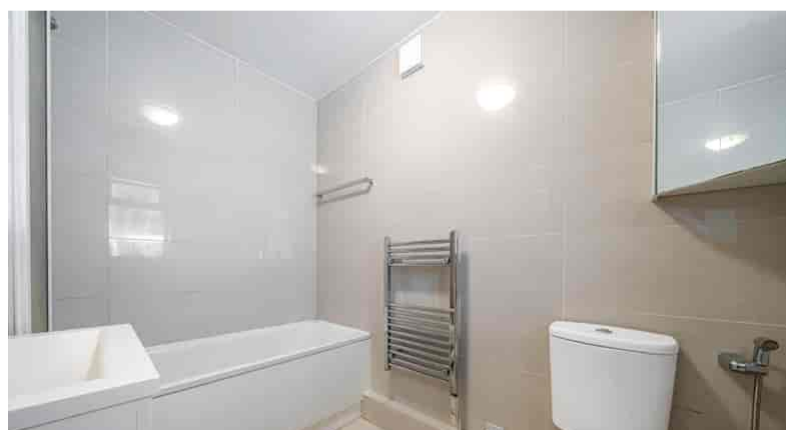


This elegant and beautifully modernised three bedroom, two bathroom end of terrace home is perfect for the growing family. Moments from the bustling Edgware town Centre, with superb transport links (Northern and Jubilee Line, major bus depot).

Great selection of coffee shops, restaurants and other selected shops. Outstanding local schools at primary and secondary levels including nurseries within 1 mile of the property. Internal viewing is highly recommended.

Tel: 0208 065 0010

Web: cowandco-london.com



- Smart pretty garden
- Moments from Town centre and transport links
- Stunning newly fitted modern kitchen
- Luxury bathroom
- Sole agents
- Vibrant local community
- Semi open plan kitchen with high quality fixtures
- Three generous bedrooms

Tel: 0208 065 0010

Web: cowandco-london.com