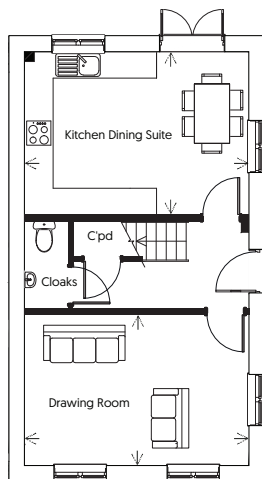


PLOTS 15 & 19

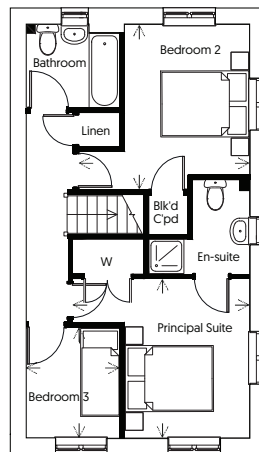
# Birdlip

BP

BROOKTHORPE  
PARK



GROUND FLOOR



FIRST FLOOR

## DIMENSIONS

### *Drawing Room*

16'9" x 12' 2"      5.1m x 3.4m

### *Kitchen Dining Suite*

16' 9" x 12' 2"      5.1m x 3.7m

### *Principal Suite*

13' 3" x 11' 11"      4.0m x 3.6m

### *Bedroom 2*

12' 9" x 12' 4"      3.9m x 3.8m

### *Bedroom 3*

7' 1" x 8' 3"      2.2m x 2.5m

20.04.2023 Please note plot 15 is a handed version of the floor plan shown above.

The information and images we provide are issued in good faith and designed to give a flavour of our development and house types. This may not reflect a specific plot and does not form part of any contract. Details such as final finishes, landscaping, handing and windows will vary. Layouts including bathroom and kitchen layouts are indicative only and designs may change due to our process of continuous product development. Some house types include areas of reduced headroom. All dimensions are approximate only. Images used in marketing materials may be computer generated or photography of previous developments.

Our sales consultant will be delighted to discuss plot specific details prior to any formal reservation.



COTSWOLD  
HOMES

Call 07917 376854 or Visit [www.cotswoldhomes.co.uk](http://www.cotswoldhomes.co.uk)

DRAFT  
INFORMATION