



Flat 11, Linden Place Fairfield Avenue, Staines-upon-Thames, Surrey, TW18 4AF

WELL PRESENTED ONE BEDROOM APARTMENT IN PURPOSE BUILT DEVELOPMENT LOCATED WITHIN MOMENTS OF HIGH STREET & MAINLINE TRAIN STATION. The property benefits from a spacious lounge, modern fitted kitchen, double bedroom, modern white bathroom suite and allocated parking. No Onward Chain. Viewings Highly Recommended!

ROOM DESCRIPTIONS

Communal Entrance

With security entry-phone, stairs to second floor.

Second Floor

Entrance Hall

Light and power points, wall mounted heater.

Doors to:

Lounge

Rear aspect window, light and power points, TV point.



Kitchen

Side aspect window, range of fitted units at eye and base level, sink drainer unit, built-in oven and hob with extractor over, space for washing machine and fridge/freezer. Integrated dishwasher.



Bedroom

Rear aspect window, light and power points, wall mounted heater.



Bathroom

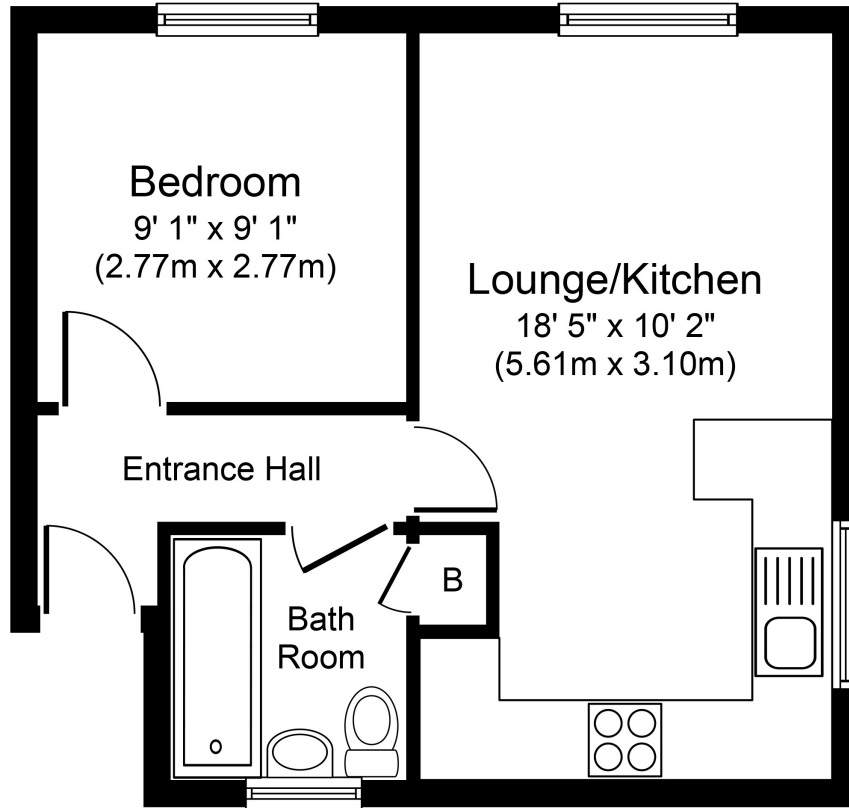
Front aspect window, panel enclosed bath with shower over, pedestal wash hand basin, low level W.C, cupboard housing hot water tank, partly tiled walls, tiled floor.



Outside

1 Allocated parking space, Communal Bin Store.

FLOORPLAN



Approximate Floor Area
344 sq. ft.
(32.0 sq. m.)

Whilst every attempt has been made to ensure the accuracy of the floor plan contained here, measurements of doors, windows, rooms and any other items are approximate and no responsibility is taken for any error, omission, or mis-statement. This plan is for illustrative purposes only and should be used as such by any prospective purchaser or tenant. The services, systems and appliances shown have not been tested and no guarantee as to their operability or efficiency can be given.

Copyright V360 Ltd 2022 | www.houseviz.com