

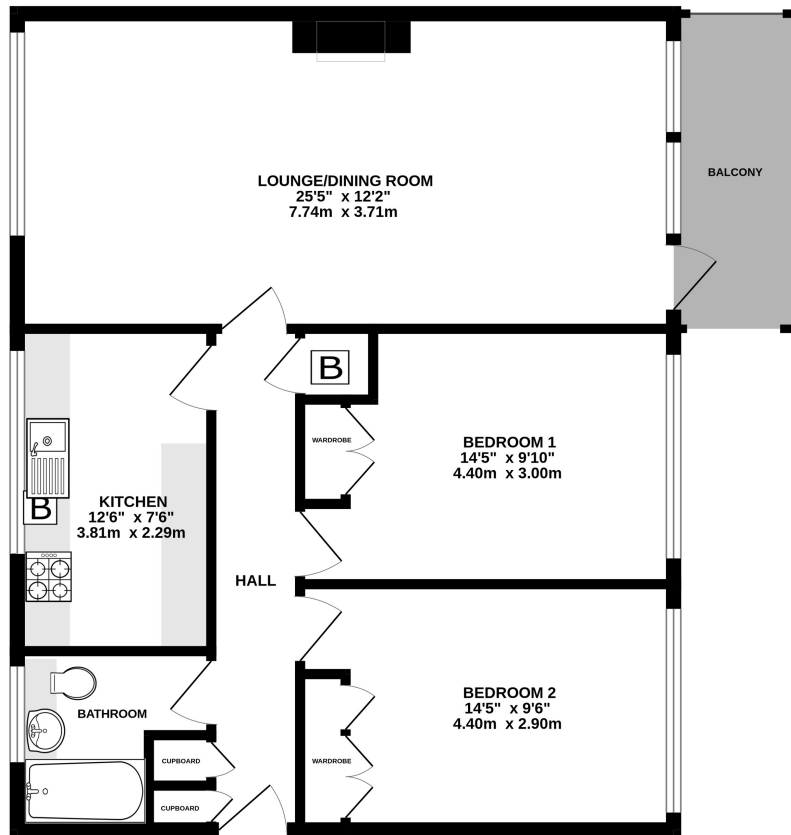
Chertsey Road, Shepperton, TW17 9NJ

Offer's Over £350,000

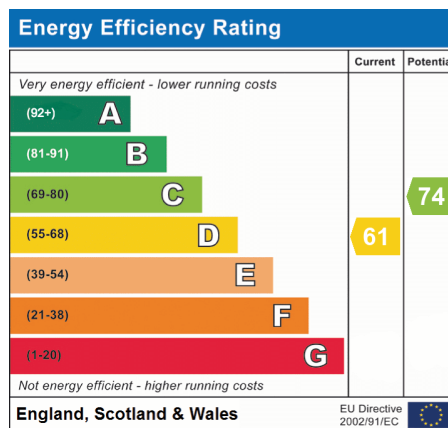


- Exclusive Development in Old Shepperton
- Garage in Block
- Well kept communal gardens
- Close to River Thames
- 2 Double Bedrooms With Fitted Wardrobes
- Private Balcony Overlooking Gardens
- 0.5 Miles of Shepperton High Street and Rail Station
- No Onward Chain

GROUND FLOOR
794 sq.ft. (73.8 sq.m.) approx.



TOTAL FLOOR AREA : 794 sq.ft. (73.8 sq.m.) approx.
Whilst every attempt has been made to ensure the accuracy of the floorplan contained here, measurements of doors, windows, rooms and any other items are approximate and no responsibility is taken for any error, omission or mis-statement. This plan is for illustrative purposes only and should be used as such by any prospective purchaser. The services, systems and appliances shown have not been tested and no guarantee as to their operability or efficiency can be given.
Made with Metropix ©2025



We have not tested the services or domestic appliances so we cannot verify that they are in working order. The buyer is advised to obtain verification from their solicitor or surveyor. These particulars form no part of any offer or contract and their accuracy cannot be guaranteed.