



Alt Road, Formby,  
L37 6DB

OFFERS OVER  
£290,000

**SM**

STEPHANIE MACNAB  
ESTATE AGENT

Searching for a TURNKEY PROPERTY with that DREAM HOME VIBE? Look no further—this is the one for you!

From the moment you step through the door, you'll be captivated by the exceptional style, high-quality finishes, and meticulous attention to detail that flow throughout the entire home. This property is a true gem, FULLY RENOVATED and ready for you to move right in without lifting a finger.

The spacious, OPEN-PLAN LIVING AREA is the heart of the home, designed with modern family life in mind. The KITCHEN is a chef's delight, featuring high-spec integrated appliances, sleek countertops, and BI-FOLDING DOORS that open out to the garden, creating a seamless indoor-outdoor experience perfect for hosting gatherings.

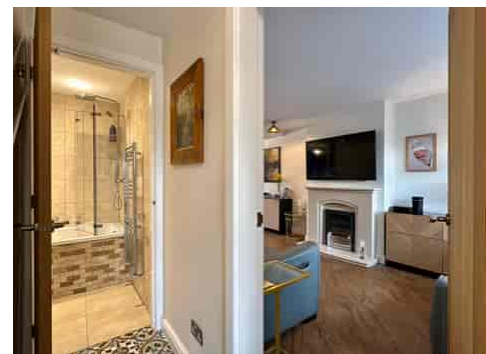
Practicality is key in this home, with added conveniences including a GROUND-FLOOR BATHROOM for guests, a dedicated UTILITY ROOM that makes laundry a breeze, and a versatile GARAGE STORE. Every detail has been considered to enhance both functionality and style.

Upstairs, you'll find THREE BEDROOMS and a modern SHOWER ROOM. Each room has been thoughtfully decorated, adding to the home's contemporary yet welcoming ambience.

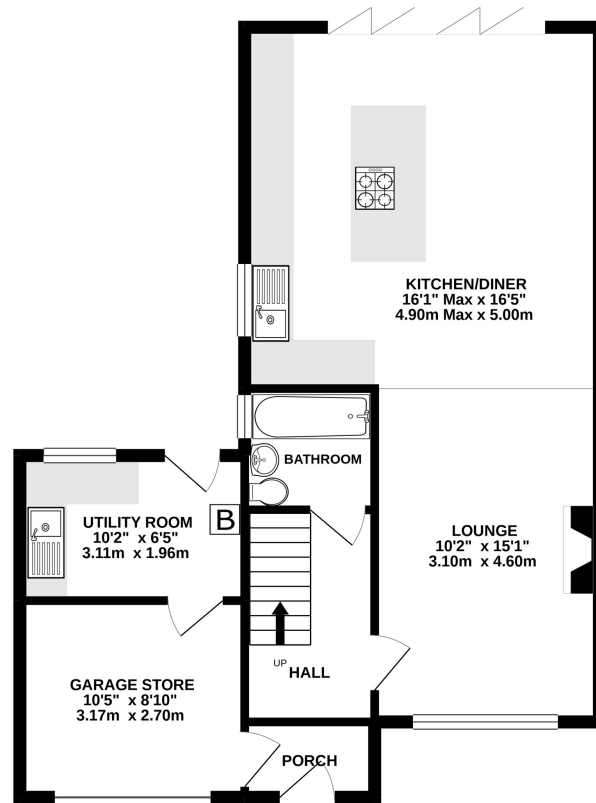
Outside, the property truly shines with fantastic KERB APPEAL. There's OFF-ROAD PARKING for two cars, ensuring convenience and peace of mind. The enclosed REAR GARDEN features two paved patio areas for outdoor dining and an artificial lawn, perfect for low upkeep and ideal for children and pets to play safely year-round.

This home offers a lifestyle of ease, comfort, and luxury. Don't miss your chance to make it yours! To arrange a viewing, call us at 01704 516 626. Follow us on Facebook and Instagram for more listings and updates!

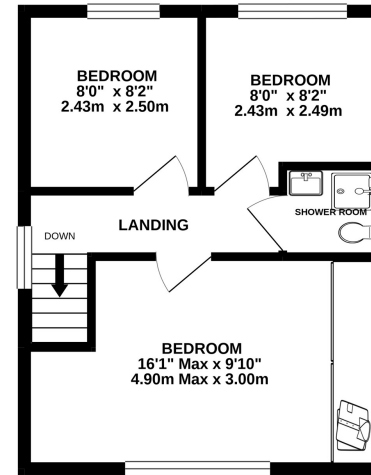




GROUND FLOOR  
679 sq.ft. (63.1 sq.m.) approx.



1ST FLOOR  
333 sq.ft. (31.0 sq.m.) approx.



TOTAL FLOOR AREA : 1013 sq.ft. (94.1 sq.m.) approx.

Whilst every attempt has been made to ensure the accuracy of the floorplan contained here, measurements of doors, windows, rooms and any other items are approximate and no responsibility is taken for any error, omission or mis-statement. This plan is for illustrative purposes only and should be used as such by any prospective purchaser. The services, systems and appliances shown have not been tested and no guarantee as to their operability or efficiency can be given.  
Made with Metropix ©2021