



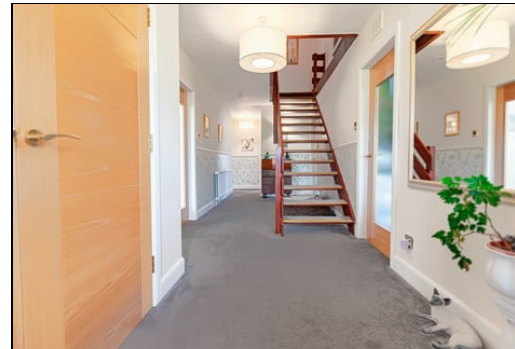
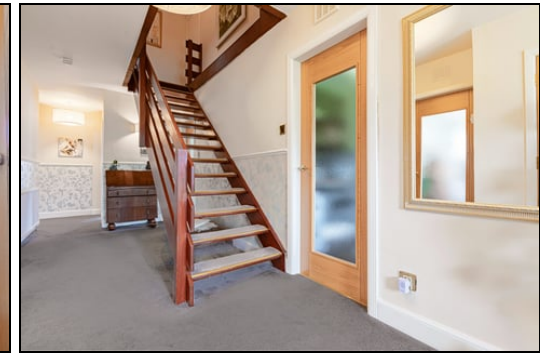
Fixed Price £329,950
2 Glenfield Gardens, Cowdenbeath, Fife, KY4 9ET

2 Glenfield Gardens, Cowdenbeath, Fife, KY4 9ET

Delmor are delighted to be marketing this rarely available spacious beautifully presented detached villa set on a corner plot in a much sought after location. Cowdenbeath has a range of amenities including shopping, schooling and leisure facilities. There is also direct access to Cowdenbeath public park. There is a train station, close links to the A92/Halbeath park and ride for the commuter. The flexible accommodation briefly comprises of on the ground floor - Entrance door through to the spacious hallway with stairs leading to the first floor. Double storage cupboard. French doors to the lounge. Large bright lounge with French doors to the dining room. Fire surround with inset gas fire. Dining room has ample room for dining table and chairs. Luxury kitchen fitted with modern floor and wall mounted units incorporating range cooker with overhead extractor fan and splashback tiling. Dishwasher and fridge/freezer. Separate utility area with units and Belfast sink. Luxury shower room comprising spacious shower, vanity unit housing the wash hand basin, LED mirror and WC. Spacious double bedroom with wardrobe storage. Further bedroom with fitted wardrobes. Bedroom 5 is currently being utilised as a TV room/office. Top hallway has hatch to the attic eaves storage. Master bedroom is a spacious double allowing open views over surrounding countryside. Luxury en suite shower room comprising of free standing bath. Corner shower cubicle, wash hand basin and WC. Another spacious double bedroom with storage cupboard. En suite toilet comprising of wash hand basin and WC. There are stunning mature gardens to the front and rear mostly laid to lawn. There is a driveway to the side leading to the garage which has power/light. The property also benefits from gas central heating, double glazing and oak doors. Early viewing is a MUST on this stunning family sized villa which is a credit to the current owner.

Ground Floor

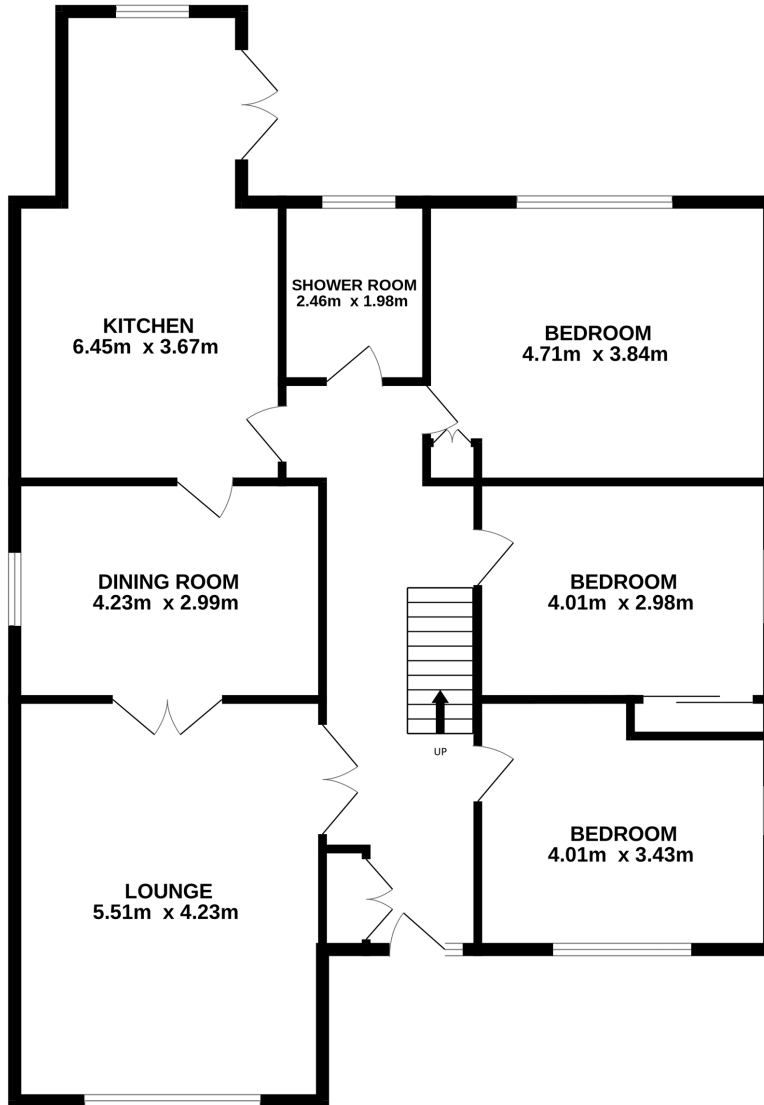
Entrance Hallway



Lounge



GROUND FLOOR



1ST FLOOR

