



2 Dale Close

Widnes, WA8 8JJ



0151 424 5100
info@mylerestates.com



Dale Close

Widnes, WA8 8JJ

Offers Over £205,000

Offered to market this **THREE BEDROOM SEMI-DETACHED FAMILY HOME**, located on popular estate located off Ash Lane, close to local amenities, **PRIMARY SCHOOLS, HOUGH GREEN** railway station, major road networks, convenience shops. The property benefits from **UPVC double-glazed windows, gas central heating, OFF ROAD PARKING, DETACHED GARAGE, ENCLOSED REAR GARDEN**. Viewing is recommended, please contact our office to arrange an appointment.





Ground Floor

Entrance Hall

Entered via UPVC double-glazed door with glazed units to side, ceiling light, laminate to flooring, stairs to first floor, doors leading to lounge, kitchen and storage cupboard.

Lounge

3.76m x 3.57m (12' 4" x 11' 9")

UPVC double-glazed window, ceiling light, laminate to flooring, radiator, coving to ceiling, dual wall lights, feature fire surround with matching inset and hearth, coal-effect gas fire.

Dining Room

3.69m x 2.89m (12' 1" x 9' 6")

Rear aspect UPVC double-glazed French doors leading to conservatory, ceiling light, coving to ceiling, laminate to flooring, radiator.

Conservatory

3.04m x 2.87m (10' 0" x 9' 5")

All around aspect UPVC double-glazed units, tiles to flooring, ceiling fan light, UPVC French doors leading to rear garden.

Kitchen

3.66m x 2.72m (12' 0" x 8' 11")

Rear aspect UPVC double-glazed window, ceiling light, tiles to flooring, UPVC double-glazed door leading to side of property, kitchen comprises of a range of wall and base units with work surface over with tiled splashback, space for a Range style gas cooker, tiled splashback, chimney styled extractor hood over, integral fridge/freezer, space and plumbing for a washing machine and dishwasher.

First Floor

Stairs & Landing

Side aspect UPVC double-glazed window, ceiling light, carpet to flooring, doors leading to all three bedrooms and bathroom.

Bedroom One

3.76m x 3.56m (12' 4" x 11' 8")

Front aspect UPVC double-glazed window, recessed ceiling lights, wall lights, coved and textured ceiling, laminate to flooring, radiator, a range of fitted wardrobes.

Bedroom Two

3.69m x 2.92m (12' 1" x 9' 7")

UPVC double-glazed window, ceiling light, coved and textured ceiling, laminate to flooring, radiator.

Bedroom Three

2.73m x 2.05m (8' 11" x 6' 9")

UPVC double-glazed window, ceiling light, coving to ceiling, laminate to flooring, radiator.

Bathroom

UPVC double-glazed obscured window, recessed ceiling lights, tiles to flooring, chrome heated towel rail, bathroom comprises of a four piece white suite, low level WC, wall mounted wash hand basin, fully tiled enclosed shower cubicle with electric shower over, panel-enclosed bath, fully tiled walls.

External

Front

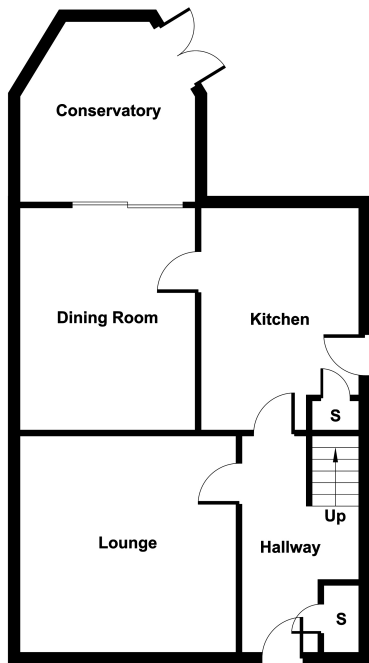
Bound by wood panel fencing, laid to block paving, shingle border, wooden gated access leading to garage and rear garden.

Detached Garage

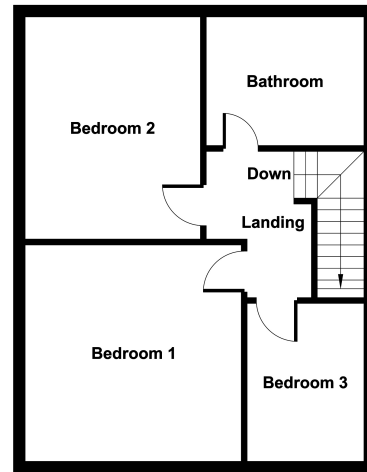
Built to concrete construction, metal up and over door, side aspect window and door.

Rear Garden

Bound by wood panel fencing, patio laid to block paving, laid to lawn, access to garage and conservatory.



Ground Floor



First Floor



Myler & Co
77, Albert Road, Widnes, Cheshire, WA8 6JS
0151 424 5100
info@mylerestates.com