

South Street

Castle Cary, BA7 7ES

COOPER
AND
TANNER



£350,000 Freehold

Located on the desirable South Street in Castle Cary is this delightful two bedroom end-of-terrace period cottage

South Street Castle Cary BA7 7ES

 2  2  1 EPC D

£350,000 Freehold

DESCRIPTION

Located on the desirable South Street in Castle Cary is this delightful two bedroom end-of-terrace period cottage. Boasting a prime location within walking distance of the town centre, this characterful home offers the perfect blend of 18th Century living with modern amenities and easy accessibility to the towns shops, pubs and community.

Step inside to discover a warm and inviting living space, where original character features blend seamlessly within the more modern comforts. The spacious layout provides ample room to relax and entertain guests, coupled with natural light coming in from the windows to illuminate the charming exposed beams of the living room ceiling and other period details throughout such as the flagstone flooring and inglenook fireplaces.

The well-appointed kitchen is fitted with a gas AGA and allows for plenty of storage space and can be accessed separately via the dining room located parallel. Doors lead out to the private rear garden space which is currently used as a courtyard area.

Upstairs, you'll find two spacious bedrooms, each offering a fantastic amount of space that most modern homes are unable to match. The master bedroom boasts ample closet space while the second bedroom provides versatility as a guest room. One of the standout features of this property is its large footprint spanning approximately 121 square meters. It provides more than an adequate amount of space for comfortable living and entertaining.

Additionally, the home benefits from a privately shared lane, with access to the rear courtyard via a large wooden gate. Behind the gates is where there is scope for the potential allocation of a dedicated parking space to the rear of the property for a vehicle or two in tandem further adding convenience for residents and guests alike.

Other highlights of this charming cottage include gas-based central heating for year-round comfort and character features that add to the home's appeal without the restrictions of being a listed building. With its ideal location, spacious layout, and timeless charm, this period cottage on South Street is the perfect place to call home in Castle Cary. Don't miss your chance to make it yours and experience the magic this home can offer

TENURE

Freehold

COUNCIL TAX BAND

D

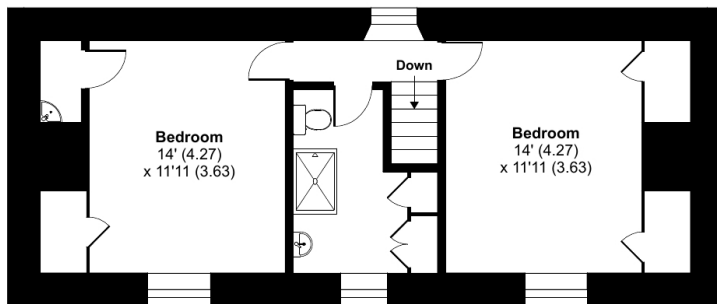




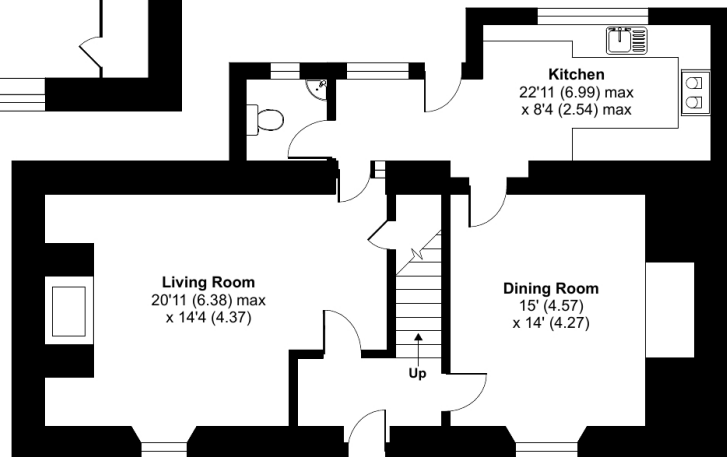
South Street, BA7

Approximate Area = 1303 sq ft / 121 sq m

For identification only - Not to scale



FIRST FLOOR



GROUND FLOOR



Floor plan produced in accordance with RICS Property Measurement Standards incorporating International Property Measurement Standards (IPMS2 Residential). © ncthecom 2024. Produced for Cooper and Tanner. REF: 1109559

CASTLE CARY OFFICE

Telephone 01963 350327

Fore Street, Castle Cary, Somerset BA7 7BG

castlecary@cooperandtanner.co.uk

COOPER
AND
TANNER

Important Notice: These particulars are set out as a general outline only for the guidance of intended purchasers and do not constitute, nor constitute part of, an offer or contract. All descriptions, dimensions, reference to condition and necessary permissions for use and occupation, warranties and other details are given without responsibility and any intending purchasers should not rely on the m as statements or representations of fact but must satisfy themselves by inspection or otherwise as to the correctness of each of them.

