

10 Tower Hamlets Street

Dover
CT17 0DX

£140,000 FREEHOLD

Draft Details...Chain Free | Two Bedroom House With Basement Room | Ideal For Buyers Looking To Put Their Own Mark On A Property | Burnap + Abel are delighted to offer onto the market this two bedroom terraced house located in the highly convenient Tower Hamlets Street, Dover. The property is in need of modernisation making this an ideal opportunity for those looking to put their own stamp on a property. The accommodation boasts a lounge, kitchen/dining room, two double bedroom and a wet room. Additional benefits include a garden, basement, double glazing, gas central heating and NO ONWARD CHAIN. For your chance to view call Burnap + Abel on 01304 279107.



Lounge

12' 1" x 10' 4" (3.68m x 3.15m)

Kitchen/Dining Room

16' 4" x 12' 0" (4.98m x 3.66m)

Utility

8' 7" x 5' 0" (2.62m x 1.52m)

Wet Room

9' 2" x 4' 3" (2.79m x 1.30m)

Basement

Bedroom One

12' 2" x 10' 3" (3.71m x 3.12m)

Bedroom Two

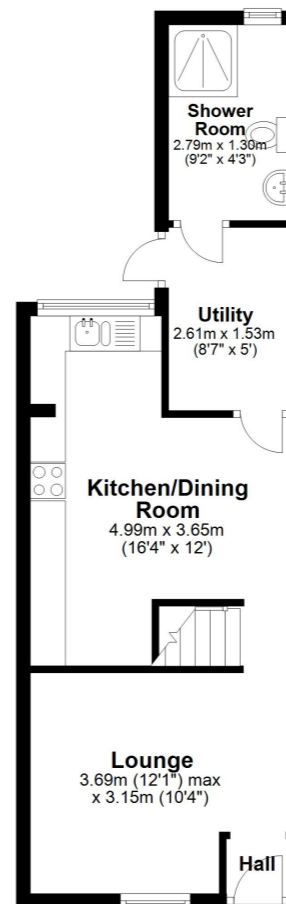
12' 1" x 6' 0" (3.68m x 1.83m)

Garden

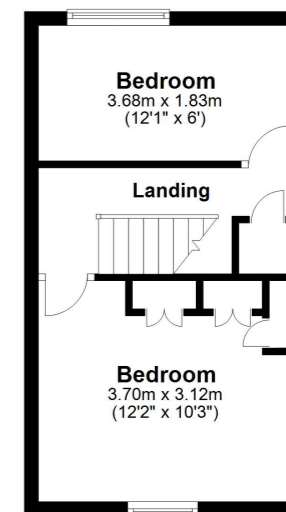
Area Information

Situated close to Dover Town Centre with its range of amenities including shopping, educational and recreational facilities together with the Docks and seafront offering regular ferry crossings to The Continent and within easy access of the St James' Retail Park. The property is on the main bus route and there are several primary and secondary schools dotted around the town. The nearby A2 dual carriageway offers a fast connection to the Cathedral City of Canterbury. Dover Priory mainline railway station offers excellent fast speed connections to the capital.

Ground Floor
Approx. 35.9 sq. metres (386.1 sq. feet)



First Floor
Approx. 24.6 sq. metres (264.7 sq. feet)



Whilst every attempt has been made to ensure the accuracy of the floor plan contained here, measurements of doors, windows, rooms and any other items are approximate and no responsibility is taken for any error, omission or mis-statement. This plan is for illustrative purposes only and should be used as such by any prospective purchaser.
Plan produced using PlanUp.

