



BarrettMove





**17 Edith Road, Maidenhead, Berkshire SL6 5DY**  
**Offers in Excess of £850,000 - Freehold**



## PROPERTY SUMMARY

Barrett Move is delighted to offer a rarely available detached three bedroom home with an unusually large wrap around plot and garage.

## POINTS OF INTEREST

- \*\*\*\*\*CHAIN FREE\*\*\*\*\*
- Large corner plot
- Potential to extend (STPP)
- Large reception rooms
- Peaceful, desirable road
- Driveway parking
- Garage
- In catchment for Newlands and Courthouse Schools
- Great location near National Trust land

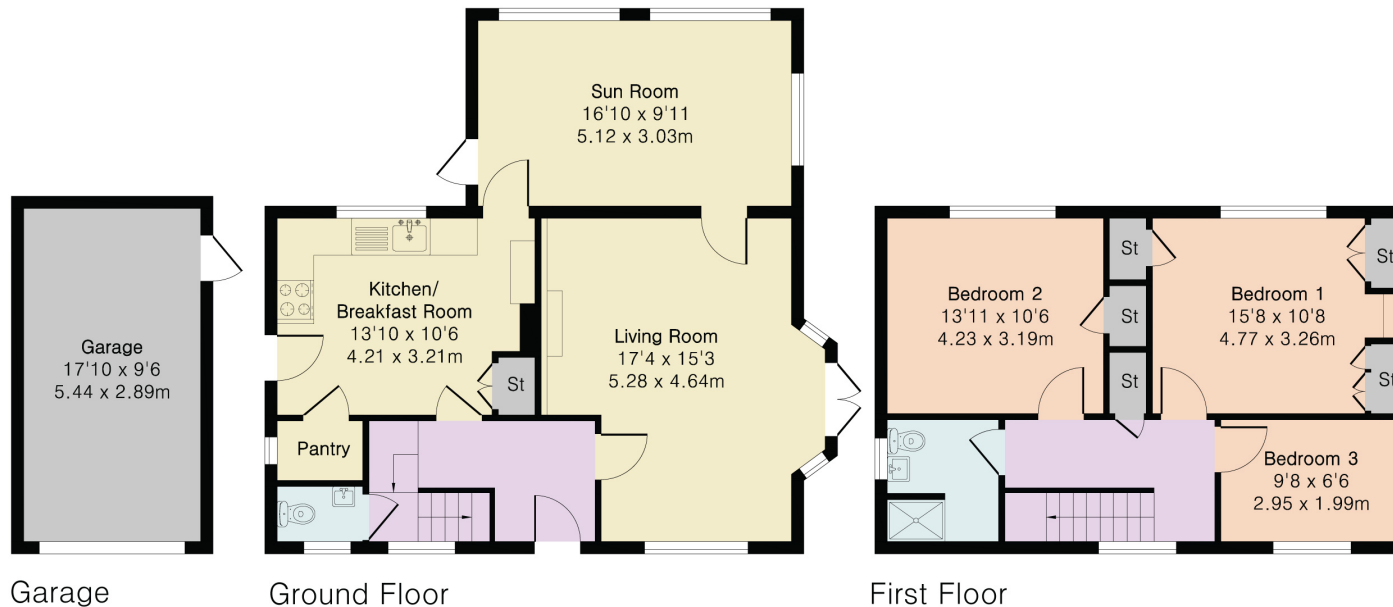


**Approximate Gross Internal Area 1144 sq ft - 106 sq m  
(Excluding Garage)**

Ground Floor Area 667 sq ft – 62 sq m

First Floor Area 477 sq ft – 44 sq m

Garage Area 169 sq ft – 16 sq m



Floor plan produced in accordance with RICS Property Measurement 2nd Edition. Although Pink Plan Ltd ensures the highest level of accuracy, measurements of doors, windows and rooms are approximate and no responsibility is taken for error, omission or misstatement. These plans are for representation purposes only and no guarantee is given on the total square footage of the property within this plan. The figure icon is for initial guidance only and should not be relied on as a basis of valuation.

Energy Efficiency Rating		Current	Potential
Very energy efficient - lower running costs			
(92+)	<b>A</b>		
(81-91)	<b>B</b>		
(69-80)	<b>C</b>		
(55-68)	<b>D</b>	63	76
(39-54)	<b>E</b>		
(21-38)	<b>F</b>		
(1-20)	<b>G</b>		
Not energy efficient - higher running costs			
England, Scotland & Wales			
EU Directive 2002/91/EC			