



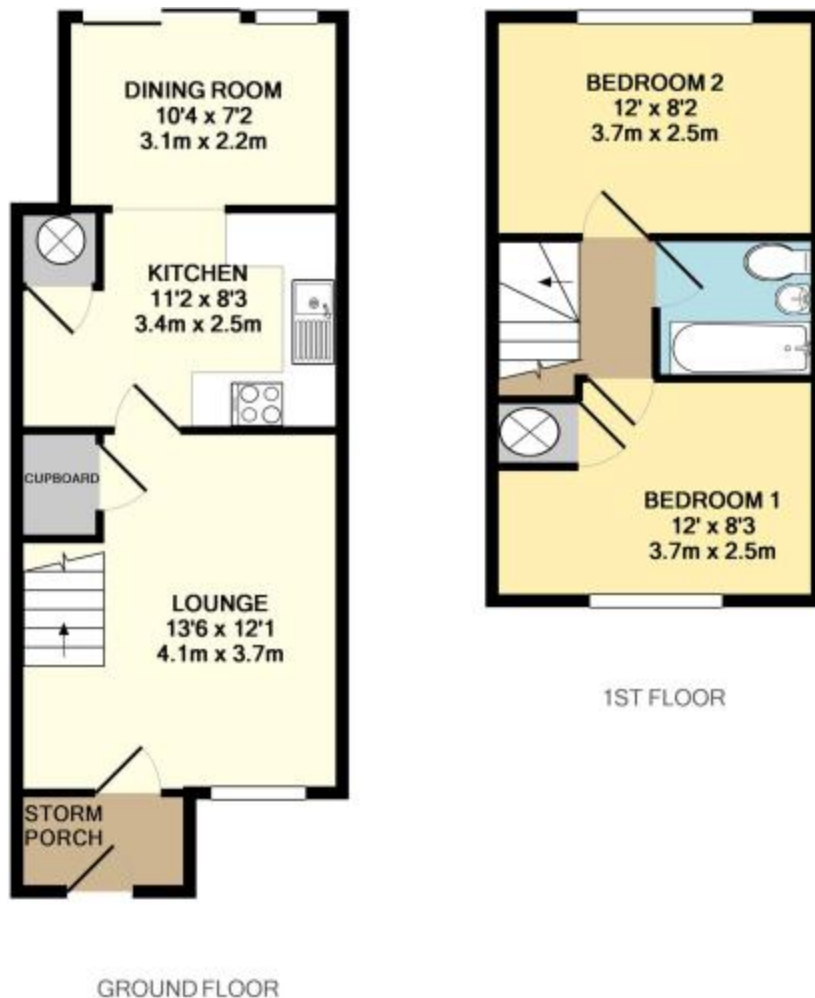
## **Northfield Road, Staines-upon-Thames, Surrey, TW18 2SP**

WELL PRESENTED AND SPACIOUS TWO BEDROOM EXTENDED HOUSE SITUATED ALONG THIS POPULAR NO-THROUGH ROAD IDEALLY LOCATED FOR EASY ACCESS TO STAINES TOWN CENTRE & MAINLINE TRAIN STATION. The property benefits from a spacious lounge, modern fitted kitchen/diner with patio doors to garden, two double bedrooms, modern white bathroom suite, private rear garden and residents parking. Unfurnished. Available Immediately. Viewings Highly Recommended!

ROOM DESCRIPTIONS

\_\_\_\_\_

## FLOORPLAN



TOTAL APPROX. FLOOR AREA 618 SQ.FT. (57.4 SQ.M.)

Whilst every attempt has been made to ensure the accuracy of the floor plan contained here, measurements of doors, windows, rooms and any other items are approximate and no responsibility is taken for any error, omission, or mis-statement. This plan is for illustrative purposes only and should be used as such by any prospective purchaser. The services, systems and appliances shown have not been tested and no guarantee as to their operability or efficiency can be given.

Made with Metropix ©2012