

An unique timber frame 2 bed bungalow set within a large plot with potential for re-development (stc). Llanon Near Aberaeron/Aberystwyth - Cardigan Bay, West Wales.



Ty Coed, Llanon, Near Aberaeron, Ceredigion. SY23 5HX.

£159,000

Ref R/5080/RD

****Timber frame and timber clad bungalow dating back some 40 years**CASH BUYERS ONLY**Set within a large plot**Potential for re-development (stc)**Double garage**Ample off road parking**Private rear garden with stream boundary**Attractive setting with countryside outlook**Walking distance to beach and village amenities**Unique and rare opportunity within this favoured coastal village**MUST BE VIEWED TO BE APPRECIATED**Cash Buyers due to unsuitable Mortgage Conditions****

The property is situated within the coastal village of Llanon, strategically positioned along the A487 coastal trunk road. The village offers good level of local amenities and services including primary school, village shop and post office, filling station, takeaway, public house, hairdressers and good public transport connectivity. The Georgian harbour town of Aberaeron is some 10 minutes drive to the south offering secondary school, leisure centre, community health centre, traditional high street offering, renowned local cafes bars and restaurants. The university town of Aberystwyth with its regional hospital and network rail connections is less than 30 minutes drive to the north.



LAMPETER
12, Harford Square, Lampeter,
Ceredigion, SA48 7DT
Tel:01570 423623
lampeter@morgananddavies.co.uk



ABERAERON
4, Market Street, Aberaeron,
Ceredigion, SA46 0AS
Tel:01545 571 600
aberaeron@morgananddavies.co.uk



CARMARTHEN
11, Lammas St, Carmarthen,
Carmarthenshire, SA31 3AD
Tel:01267 493444
carmarthen@morgananddavies.co.uk

GENERAL

A rare and unique opportunity within this favoured coastal village to purchase an original timber frame property dating back some 40 years or so.

The construction of the property would be questionable for a mortgage purposes and the vendors has expressed a desire for cash buyers only.

The dwelling is situated within a large commodious plot with private rear garden and stream boundary with a wonderful outlook over the adjoining countryside and woodland.

It is considered that the building has potential for full re-development for a new dwelling, subject to the necessary consents.

The plot benefits from ample off road parking from the adjoining county road.

The accommodation provides more particularly as follows -

Front Porch

Accessed via double glass panel doors, 2 side windows. Into -



Lounge

23' 5" x 11' 6" (7.14m x 3.51m) with tiled fireplace, surround and hearth, patio door to rear patio and garden, windows to side, 2 x radiators, multiple sockets, tv point, sliding patio

door into -



Conservatory

9' 1" x 10' 8" (2.77m x 3.25m) with floor to ceiling upvc windows to all sides, side patio door to garden, radiator, tiled flooring.



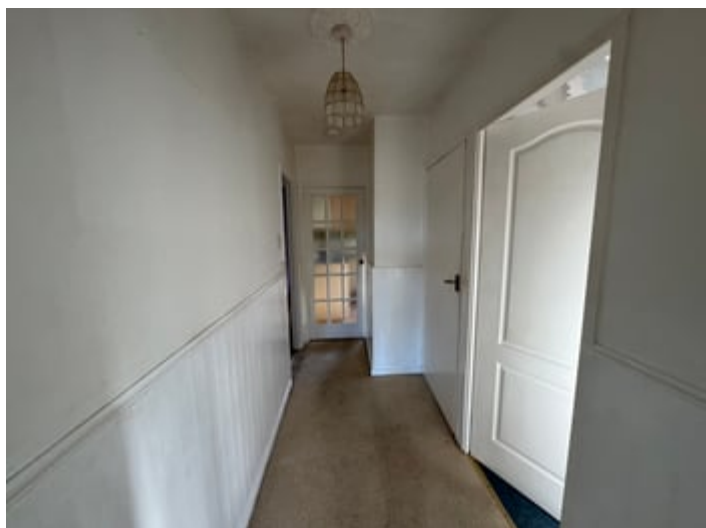
Bedroom 1



10' 6" x 9' 8" (3.20m x 2.95m) accessed from the lounge to a double bedroom with window to front, multiple sockets, radiator.

Inner Hallway

With airing cupboard. Access to Loft. BT Point.



Bathroom

8' 1" x 8' 0" (2.46m x 2.44m) with panelled bath with shower over, single wash hand basin and vanity unit, dual flush w.c. radiator.



Bedroom 2

10' 7" x 12' 6" (3.23m x 3.81m) a double bedroom, window to front, radiator, multiple sockets.



Kitchen

12' 7" x 11' 6" (3.84m x 3.51m) with a range of oak effect base and wall units, formica worktop, 1½ stainless steel sink and drainer with mixer tap, housing a Worcester oil boiler, space for electric cooker, oak effect vinyl flooring, side door to parking and garden areas.



EXTERNALLY

To the Front

The property is approached from the adjoining county lane via a tarmacadamed forecourt with space for 3+ vehicles to park.

Separate footpath leading through to the front of the property with surrounding footpath leading through to -





Extended Garden Area

Laid to lawn with mature trees and planting to borders with stream boundary. Having a wonderful outlook over the adjoining countryside and woodland.



Rear Patio Area

With glasshouse. Steps leading down to -





aberaeron@morgananddavies.co.uk

All properties are available to view on our Website – www.morgananddavies.co.uk. Also on our FACEBOOK Page - www.facebook.com/morgananddavies. Please 'LIKE' our FACEBOOK Page for new listings, updates, property news and 'Chat to Us'.

To keep up to date please visit our Website, Facebook and Instagram Pages

Services

We are advised that the property benefits from mains water and electricity. Private Bio Disc Drainage. Oil Central Heating.

Council Tax Band C (Ceredigion County Council).

Tenure - Freehold.

H.M. LAND REGISTRY

ORDNANCE SURVEY
PLAN REFERENCE

SN 5166

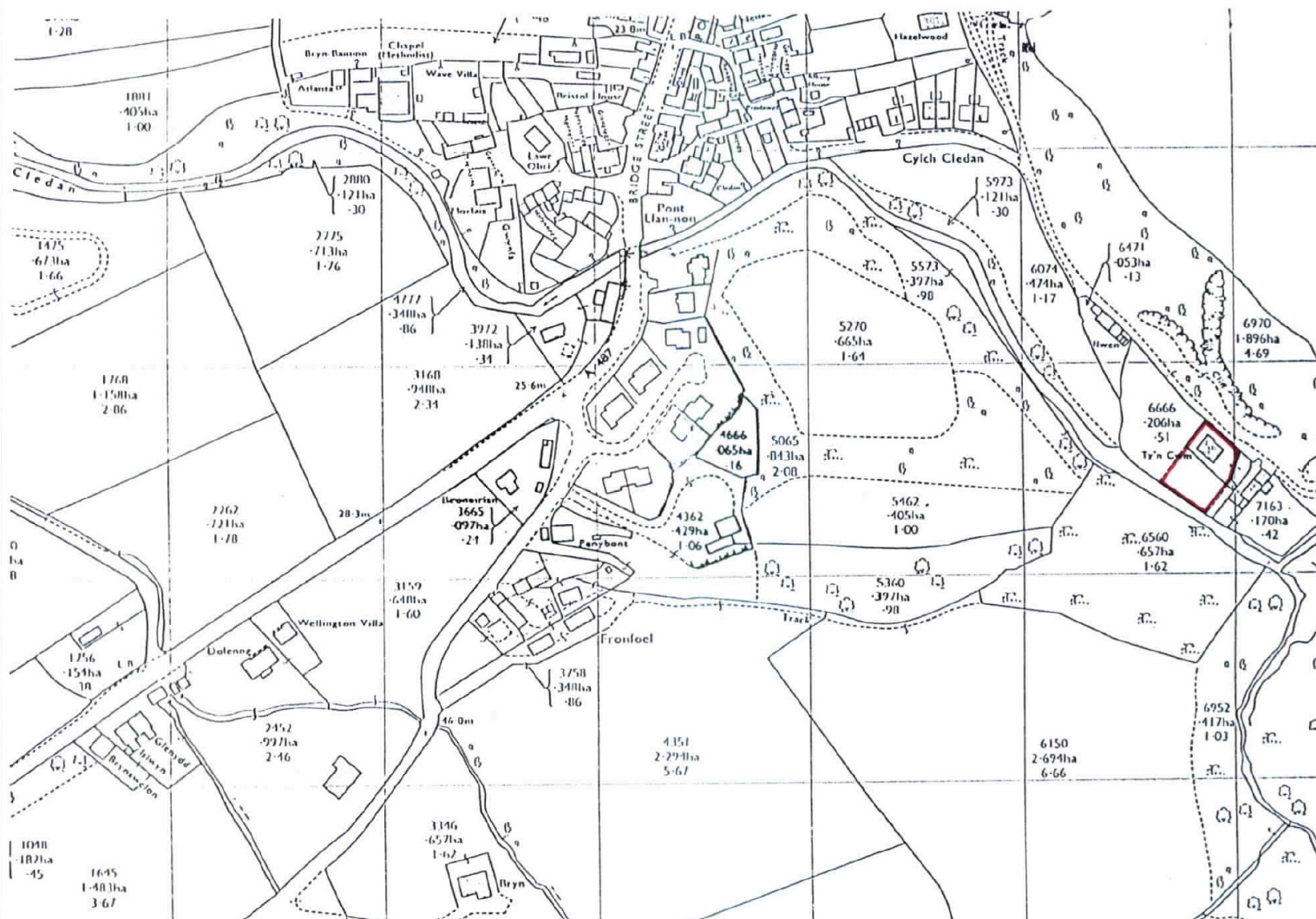
TITLE NUMBER

WA882028

Scale
1/ 2500

ADMINISTRATIVE AREA CEREDIGION / SIR CEREDIGION

© Crown copyright



MATERIAL INFORMATION

Council Tax: Band C

N/A

Parking Types: Private.

Heating Sources: Oil.

Electricity Supply: Mains Supply.

Water Supply: Mains Supply.

Sewerage: Private Supply.

Broadband Connection Types: FTTP.

Accessibility Types: None.

Construction Type

Timber frame and timber clad

EPC Rating: D (57)

Has the property been flooded in last 5 years? No

Flooding Sources:

Any flood defences at the property? No

Any risk of coastal erosion? No

Is the property listed? No

Are there any restrictions associated with the property? No

Any easements, servitudes, or wayleaves? No


The existence of any public or private right of way? No



Directions

Heading north from Aberaeron on the A487, proceed for approximately 4 miles, passing through the village of Aberarth and entering into Llanon. On entering Llanon, pass the bus stop on your left hand side and over the bridge, take the next right hand turning onto Heol Non. At this point you will travel through a narrow street to a cluster of historic properties and continue along the road, along Cylch Cledan (A row of semi detached homes), proceed for a further 500 yards and Ty Coed is the second property on the right hand side as you travel along the lane, as identified by the agents for sale board.

Energy Efficiency Rating

| | Current | Potential |
|---|---------|---|
| Very energy efficient - lower running costs | | 100 |
| (92+) A | | |
| (81-91) B | | |
| (69-80) C | | |
| (55-68) D | 57 | |
| (39-54) E | | |
| (21-38) F | | |
| (1-20) G | | |
| Not energy efficient - higher running costs | | |
| England, Scotland & Wales | | EU Directive 2002/91/EC  |

For further information or to arrange a viewing on this property please contact :

Aberaeron Office
4 Market Street
Aberaeron
Ceredigion
SA46 0AS

T: 01545 571 600

E: aberaeron@morgananddavies.co.uk

<http://www.morgananddavies.co.uk>



Regulated by

RICS