

FOR SALE

Gayford Road,
Shepherd's Bush, W12

End of Terrace House
Askew Village

£1,500,000 fh

4  2  2 



**horton
andgarton**

SALES / LETTINGS / PROPERTY MANAGEMENT

hortonandgarton.co.uk | Sales 020 8819 0510 | Lettings 020 8819 0511
172 King Street, Hammersmith, W6 0QU



FOR SALE

Gayford Road,
Shepherd's Bush, W12

End of Terrace House
Askew Village

£1,500,000 fh

4  2  2 



**horton
andgarton**

SALES / LETTINGS / PROPERTY MANAGEMENT

hortonandgarton.co.uk | Sales 020 8819 0510 | Lettings 020 8819 0511
172 King Street, Hammersmith, W6 0QU



FOR SALE

Gayford Road,
Shepherd's Bush, W12

End of Terrace House
Askew Village

£1,500,000 fh

4  2  2 

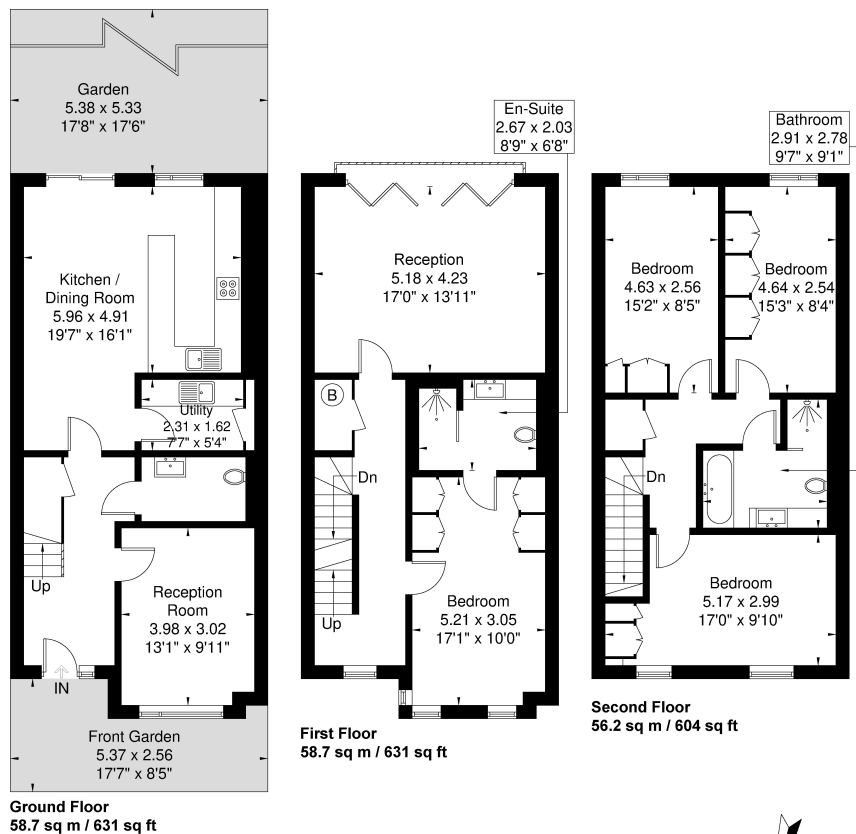


**horton
andgarton**

SALES / LETTINGS / PROPERTY MANAGEMENT

hortonandgarton.co.uk | Sales 020 8819 0510 | Lettings 020 8819 0511
172 King Street, Hammersmith, W6 0QU





ASPEN VILLAS

Approximate Gross Internal Area = 173.6 sq m / 1868 sq ft

Although every attempt has been made to ensure accuracy, all measurements are approximate. The floorplan is for illustrative purposes only and not to scale.
© www.perspective.co.uk

**horton
andgarton**



Modern Townhouse | Four bedrooms - Two bathrooms |
1868 Sq' - 173.6 SqM | EPC rating B | South facing patio
garden | Askew Village



hortonandgarton.co.uk
Sales 020 8819 0510
Lettings 020 8819 0511

172 King Street, Hammersmith, W6 0QU