

Brookland Road, Weston-Super-Mare, Somerset. BS22 8LS

£289,950 Freehold

FOR SALE



[www.housefox.co.uk](http://www.housefox.co.uk)



01934 314242  
01275 404601  
01278 557700  
[sales@housefox.co.uk](mailto:sales@housefox.co.uk)



## PROPERTY DESCRIPTION

HOUSEFOX PRESENTS....A rare opportunity in this price category to acquire an older style 3 bedroom semi featuring a lovely size south westerly facing rear garden, ample parking.

The property is tucked away at the end of a cul-de-sac and yet is ideal for local shops and amenities, plus Milton train station. The kitchen is open plan, there are 2 receptions and a further snug area off the kitchen. The property benefits from gas central heating and double glazing and is offered with NO ONWARD CHAIN COMPLICATIONS Viewing is highly recommended.

## FEATURES

- Semi Detached
- Freehold House
- NO CHAIN
- EPC C
- Extended Ground Floor Accommodation
- Sunny Rear Garden
- Cul de Sac
- Central Convenient Location



## ROOM DESCRIPTIONS

### **HALLWAY**

Stairs to first floor, lounge, bathroom, dining room.

### **BATHROOM**

Convenient ground floor location allowing the lounge to be a bedroom if needed. White suite with bath, WC, wash hand basin. window to side.

### **LOUNGE**

The grown ups room centred around the lovely bay window a cosy space to relax.

### **DINING AREA**

A large welcoming reception room that can house a huge dining table for the family!

### **KITCHEN AREA**

A fabulous entertaining space open aspect from the dining area.

### **SNUG**

A superb room ideal for kids play or gym, or just somewhere to chill after dinner.

### **BEDROOM 3**

Office/Nursery small single window to front

### **BEDROOM 2**

Good sized double window to rear.

### **BEDROOM 1**

Large double bay window to front

### **FIRST FLOOR LANDING**

Doors to bedrooms

### **GARDEN**

Good sized private sunny garden laid to lawn enclosed to all sides with hedge and fencing with access to garage.

### **OUTSIDE**

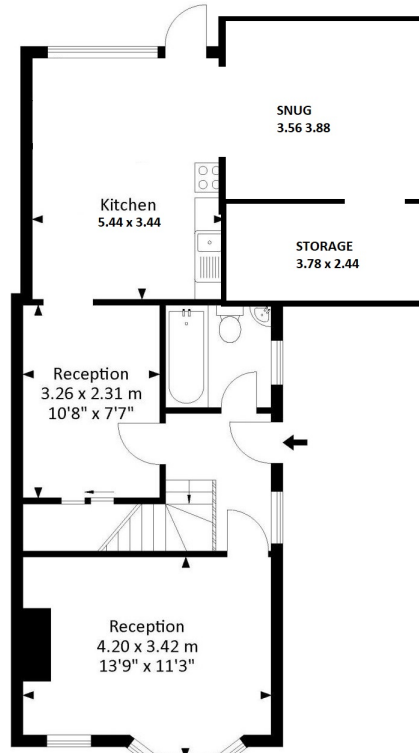
Large drive leading to a single garage.



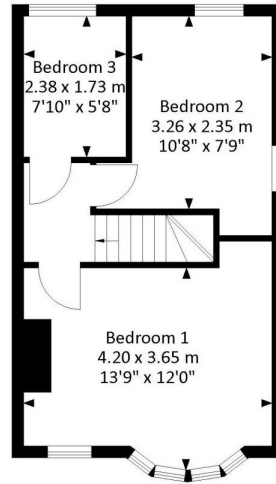




# FLOORPLAN & EPC



Ground Floor



First Floor