



Ladysmith Avenue , London, E6 3AR

Cow & Co
LONDON



Available soon this stunning newly refurbished three bedroom family home situated on Ladysmith Avenue, only minutes away from East Ham station and surrounded by local schooling. The ground floor comprises of a large through lounge, a modern kitchen leading on to a good sized garden. On the first floor there are two good sized double bedrooms and a family bathroom. On the second floor there is a further double bedroom and another bathroom.

The house is right next to Central Park, which offers a large green space, tennis courts, children's playground and a family run cafe. There are numerous pubs, restaurants and shops within a 10 minute walk from the house. Both Upton Park and East Ham tube stations are about a 15 minute walk away.



- Three bedroom family home
- Available immediately
- Unfurnished
- Two bathrooms
- Large reception room leading to kitchen
- Great local schools and Amenities
- Permit parking
- Excellent transport Links



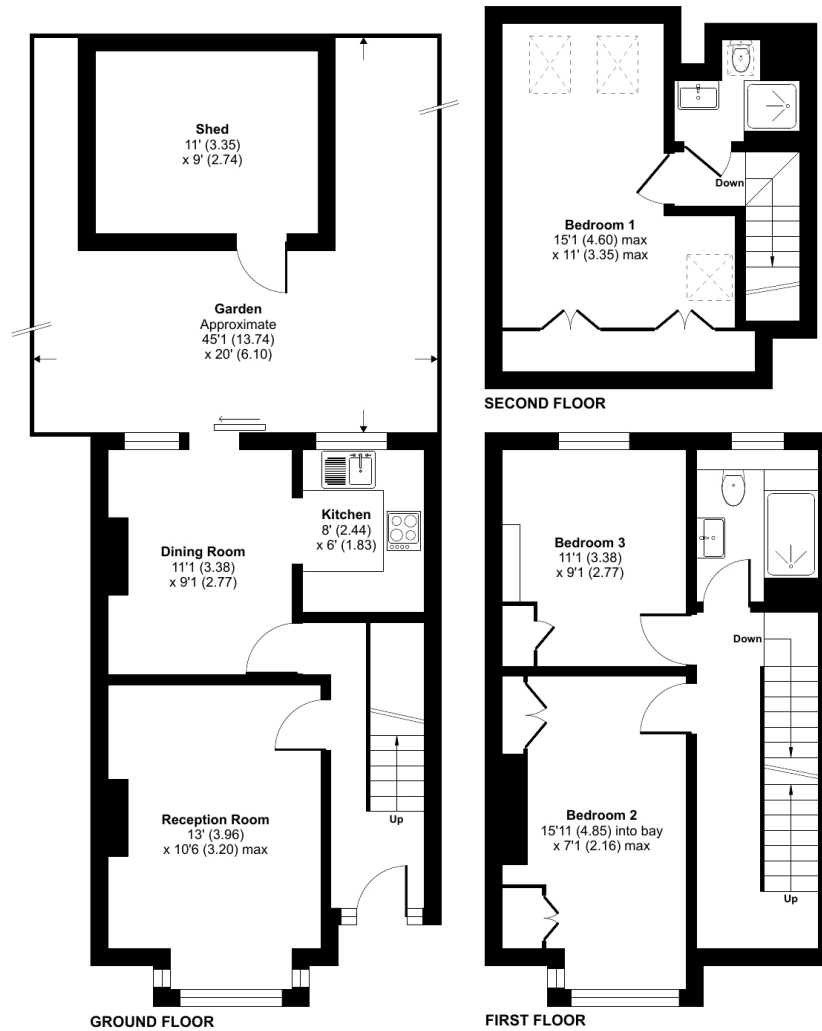
Ladysmith Avenue, London, E6

Approximate Area = 1014 sq ft / 94 sq m

Outbuilding = 99 sq ft / 9 sq m

Total = 1113 sq ft / 103 sq m

For identification only - Not to scale



Floor plan produced in accordance with RICS Property Measurement Standards incorporating International Property Measurement Standards (IPMS2 Residential). © nchecon 2023. Produced for Cow & Co Properties Ltd. REF: 938664

Tel: 0208 065 0010
Email: thehub@cowandco-london.com
Web: cowandco-london.com

Agents note: All measurements are approximate and whilst every attempt has been made to ensure accuracy they are for general guidance only and must not be relied on. The fixture and fittings referred to have not been tested and therefore no guarantee can be given that they are in working order. Internal photographs are reproduced for general information and it must not be inferred that any item shown is included with the property.

Cow & Co

LONDON