

TO LET

£1,350 pcm



6 St Johns Court Church Road, Egham. TW20 9QA

- Communal Entrance Hall
- Entry Phone System
- Inner Hall
- Lounge/Dining Room
- Fitted Kitchen/Breakfast Room
- Double Bedroom
- Modern Bathroom
- Double Glazing
- Gas Central Heating
- Allocated Parking Space

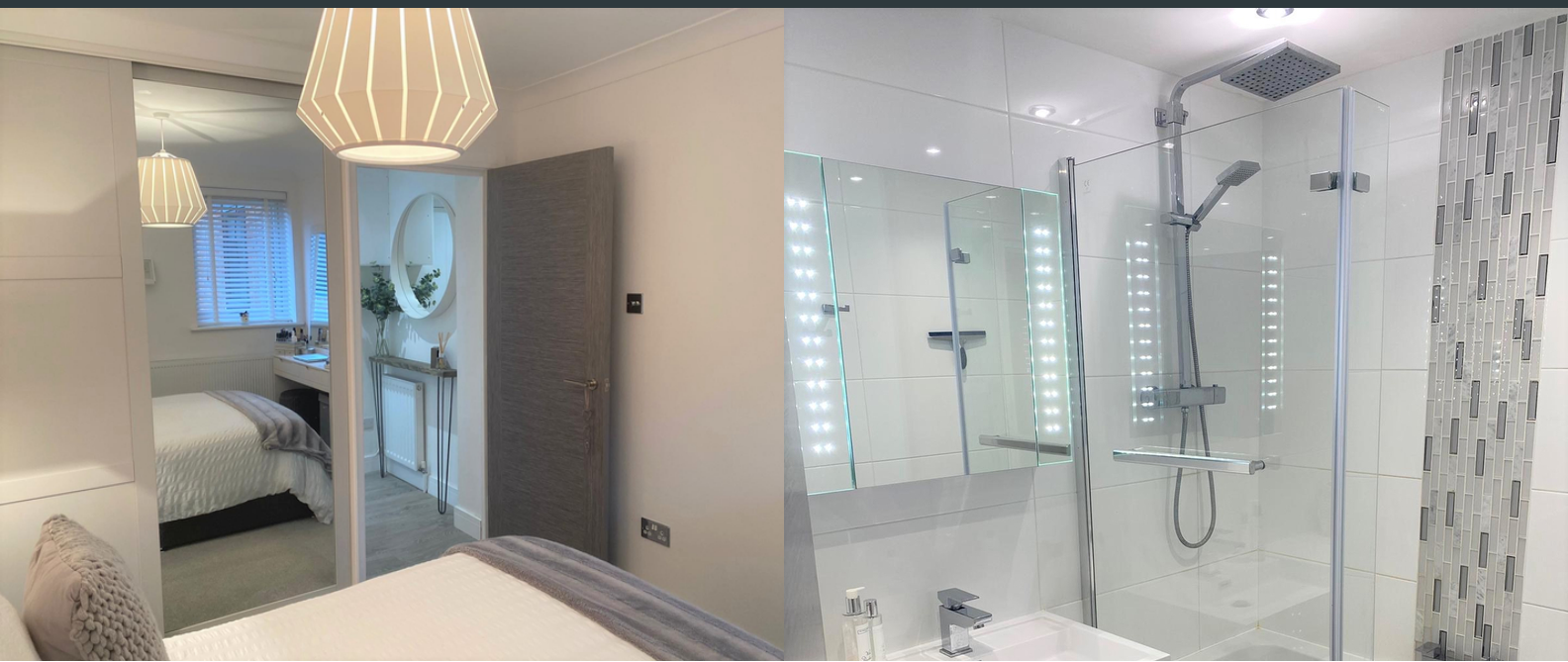


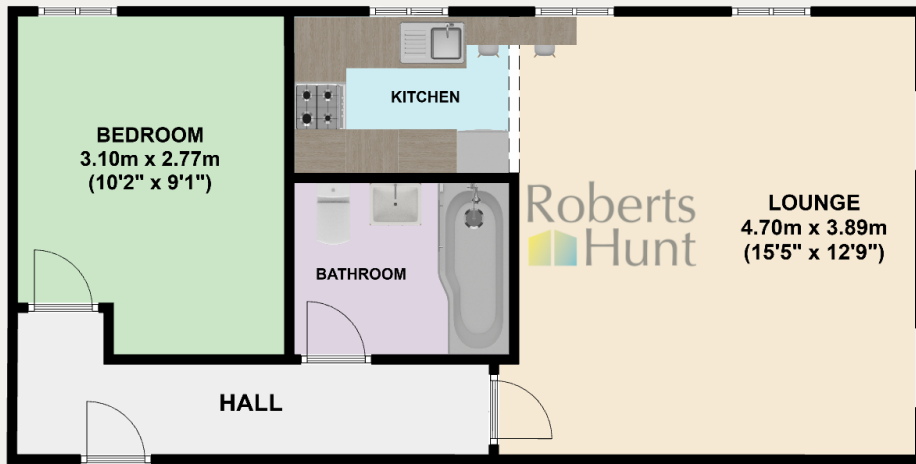
PROPERTY DESCRIPTION

A SUPERB RECENTLY REFURBISHED SPACIOUS FIRST FLOOR FLAT, CENTRALLY LOCATED WITHIN WALKING DISTANCE OF THE TOWN AND MAINLINE STATION. EARLY VIEWING IS STRONGLY RECOMMENDED. Available early February for 12 Months Renewable on a Part/Un/Furnished Basis. Suitable for Professional Individual/Couple.



ROOM DESCRIPTIONS





| Energy Efficiency Rating | | Current | Potential |
|---|----------|-------------------------|-----------|
| Very energy efficient - lower running costs | | | |
| (92+) | A | | |
| (81-91) | B | | |
| (69-80) | C | 81 | 81 |
| (55-68) | D | | |
| (39-54) | E | | |
| (21-38) | F | | |
| (1-20) | G | | |
| Not energy efficient - higher running costs | | | |
| England, Scotland & Wales | | EU Directive 2002/91/EC | |