

SOLE
AGENT

38 Marina Court

Gategny Esplanade | St Peter Port | GY11WP

Light and spacious top floor one bedroom apartment situated along the St Peter Port waterfront in the prestigious Marina Court development. Benefitting from lift access, communal rooftop garden, concierge service, on-site health suite offering discounted rates for residents and secure parking for one car.

Accommodation comprises large open plan lounge/diner, kitchen, double bedroom and a four piece bathroom. This property is suited to a mature professional couple/single person. Regret no children, pets or smokers. Available from mid-September.

£1,850 pcm

1 BEDROOM

1 BATHROOM

1 RECEPTION

PHOTOS



SPECIFICATIONS



Entrance Hall

4.31m x 1.03m (14' 2" x 3' 5")

Lounge/Diner

6.54m x 6.46m (21' 5" x 21' 2")

Kitchen

3.01m x 1.75m (9' 11" x 5' 9")

Bedroom

3.83m x 3.20m (12' 7" x 10' 6")

Bathroom

3.02m x 1.77m (9' 11" x 5' 10")

Parking

Allocated parking space for one car in secure garage.

PRICE INCLUDES

Curtains, carpets and light fittings.

SPECIAL FEATURES

- Good storage
- Central town location
- Secure parking
- Rooftop garden

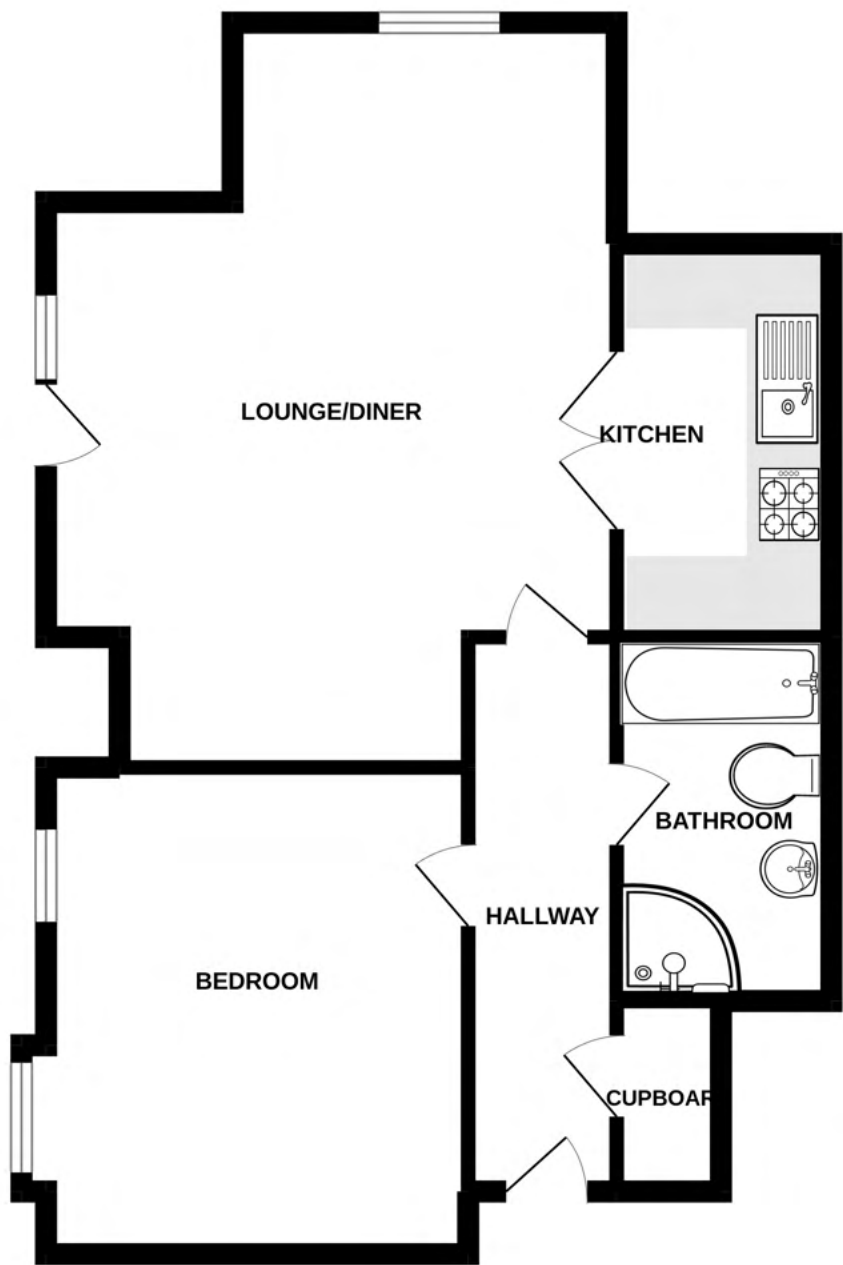
SERVICES

Mains water, electricity and drainage.

APPLIANCES INCLUDED

- Hotpoint washing machine
- Neff four ring hob and extractor fan
- Neff microwave
- Integrated fridge/freezer

TOP FLOOR



38 MARINA COURT

Whilst every attempt has been made to ensure the accuracy of the floorplan contained here, measurements of doors, windows, rooms and any other items are approximate and no responsibility is taken for any error, omission or mis-statement. This plan is for illustrative purposes only and should be used as such by any prospective purchaser. The services, systems and appliances shown have not been tested and no guarantee as to their operability or efficiency can be given.
Made with Metropix ©2022