

TO LET

F4 Chatsworth, 2 Westminster
Road, Branksome Park, Poole,
Dorset BH13 6JR



PHILIPPA SOLE



£3,500 pcm

—
Panoramic sea views across Poole Bay

BH13 Location

3 Double Bedrooms

Ground floor apartment with far reaching sea views

Large Open Plan Living and Dining Space

Secure Allocated Underground Parking space

Cloakroom

Utility Room

Band G - £3,579.59

About this property

An exceptionally well presented, three double bedroom, ground floor apartment enjoying panoramic sea views across Poole Bay. Located on the clifftop with direct access to the beach at Branksome Chine. This spacious apartment also benefits from a utility room and secure underground parking.

Chatsworth is a landmark development of just 14 apartments, overlooking the beach at Branksome Chine and sea views across Poole Bay from the Isle of Purbeck to the Isle of White. On entering this apartment you are immediately greeted by a feeling of light and spaciousness, with all of the principal rooms enjoying the panoramic sea views. The modern fitted kitchen/breakfast room has an abundance of floor and wall mounted units, island with breakfast bar and integrated appliances. This leads through to the large and versatile lounge dining room, both benefiting from access to the balcony which spans the width of the apartment. The principle bedroom has an extensive range of fitted wardrobes, superb views and a fully tiled bath/shower en-suite. Bedrooms two and three have their own en-suite shower rooms and fitted wardrobes. There is also the added advantage of an additional cloakroom and separate utility room. The apartment has an allocated underground parking space, plus there is surface parking for visitors and a lift giving access to all floors. This modern development is positioned within mature and beautifully maintained grounds with a secure gate providing direct access to Branksome Beach.

Location

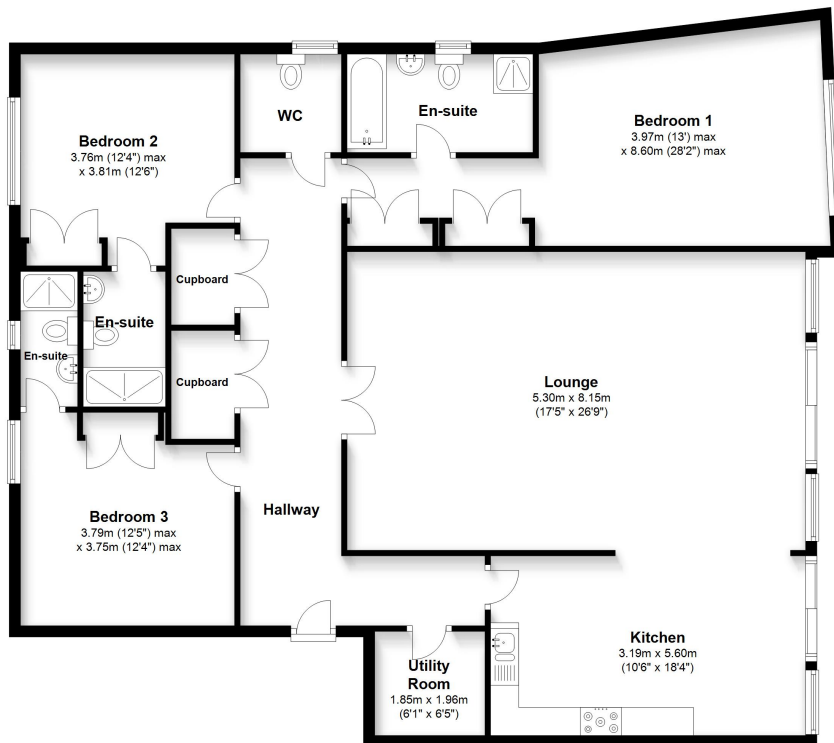
Located on the cliff top, the apartment overlooks and enjoys direct access to Branksome Beach. The Village of Canford Cliffs, with its bakery, post office, restaurants and bars, is within 0.25 of a mile, whilst the larger shopping centre of Westbourne, with a selection independently owned high end shops, Marks and Spencers food hall and charming cafés, is within easy reach. The local train station at Branksome provides a direct line into London Waterloo.





Ground Floor

Approx. 160.1 sq. metres (1722.8 sq. feet)



Total area: approx. 160.1 sq. metres (1722.8 sq. feet)

Bournemouth Energy Floor Plans are provided for illustration/identification purposes only. Not drawn to scale, unless stated and accept no responsibility for any error, omission or mis-statement. Dimensions shown are to the nearest 7.5 cm / 3 inches. Total approx area shown on the plan may include any external terraces, balconies and other external areas. To find out more about Bournemouth Energy please visit www.bournemouthenergy.co.uk (Tel: 01202 556006)
Plan produced using PlanUp.

PHILIPPA SOLE

enquiries@philippasole.co.uk — www.philippasole.co.uk — 01202 747999