



Beckford

01684 293246



2 Crumps Cottages, Beckford, GL20 7AF

As pretty as its name suggests, this cottage is immaculately presented offering characterful and spacious accommodation positioned within this heart of this delightful village.

The entrance hall welcomes visitors and leads to the lounge at the rear of the cottage with an attractive fireplace housing a modern log burner. An archway leads into the dining room, which in turn has a door leading through to the kitchen.

The kitchen is fitted with a range of wall and base units and has a door leading out to the garden.

Completing the accommodation on the ground floor is a wc.

On the first floor there are three good sized bedrooms and the main bathroom.

The bathroom spacious and is fitted with a panel bath with shower, pedestal wash basin and low level wc.



Outside the rear garden is private and attractively laid out with lawn, patio and mature planted borders. There is gated access to the rear of the property into the private gravelled courtyard which gives access to the carport parking and garage en bloc.

The cottage has the advantage of oil fired central heating and double glazed windows.

Located adjacent to open fields, this property is situated in the popular and vibrant village of Beckford.

Beckford is a sought after village centrally located between Cheltenham, Evesham and Tewkesbury and benefiting from excellent village facilities including shop; tennis courts; parish church and public house.

With J9 of the M5 within 5 miles it is an ideal commuter base with the benefit of beautiful rural countryside all around it is one home you will enjoy driving home to.

Ground Floor

Entrance Hall	8'2"x6'2"
Lounge	15'9"x12'4"
Dining room	12'5"x10'5"
Kitchen	10'5"x9'9"
WC	

First Floor

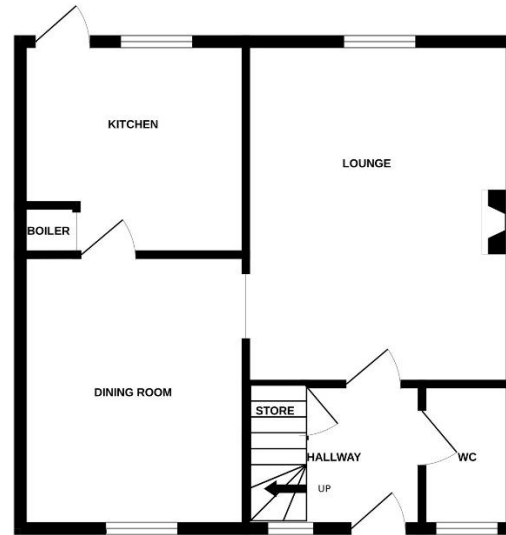
Bedroom 1	11'x10'5"
Bedroom 2	10'3"x8'8"
Bedroom 3	10'5"x8'3"
Bathroom	9'4"x9'1"

Outside

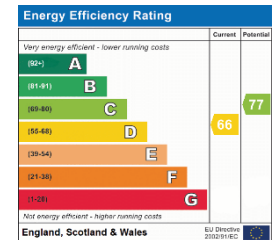
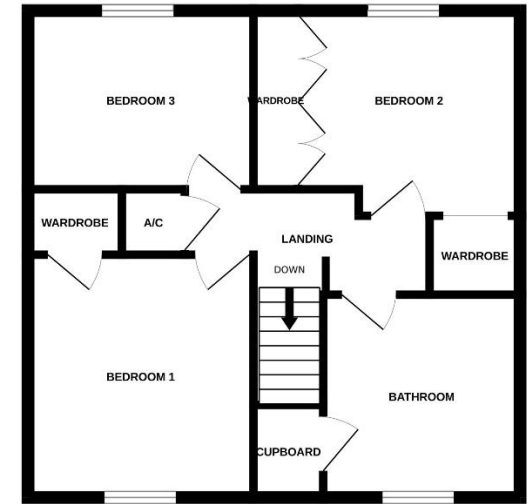
Garage	15'1"x8'3"
Carpport	

Wychavon District Council Tax Band E

GROUND FLOOR



1ST FLOOR



This floorplan is provided for guidance only as an approximate layout of the property and should not be relied upon as a statement of fact.



Guide Price £495,000 Freehold

Viewing strictly by arrangement with Engall Castle Ltd
 155 High Street Tewkesbury Gloucestershire GL20 5JP
 Office hours: Mon – Fri 9am to 5.30pm, Sat 9am to 2pm
 email: sales@engallcastle.com

01684 293 246
www.engallcastle.com



Agents Note

These property details are set out as a general outline only and do not constitute any part of an Offer or Contract. Any services equipment, fittings or central heating systems have not been tested and no warranty is given or implied by Engall Castle Ltd that these are in working order. Buyers are advised to obtain verification from their solicitor or surveyor. Fixtures and fittings or other items are not included unless specifically described. All measurements, distances and areas are approximate and for guidance only and should not be relied upon for the purposes of fitting carpets or furniture etc. These property details and all statements within this document are provided without responsibility on behalf of Engall Castle Ltd or its employees or representatives and should not be relied on as statements of fact. Prospective purchasers must satisfy themselves as to the accuracy of all details pertaining to the property.

