



Hillgrounds Road, Kempston, Bedford MK42 8TP

WALDENS ESTATE AGENTS



Hillgrounds Road
Kempston
Bedford
MK42 8TP

£385,000

Located in a small cul-de-sac of similar properties we have this much cared for 4 Bedroom detached home. Re-fitted kitchen and cloakroom. Two separate reception rooms. Utility Room. Delightful established rear garden.

- Four Bedroom Detached Home
- Two Separate Reception Rooms
- Re-Fitted Kitchen
- Utility Room
- Garage
- Established Enclosed Rear Garden
- Off Road Parking
- Walking Distance To Amenities & Schools

- Council Tax Band D
- Energy Efficiency Rating D



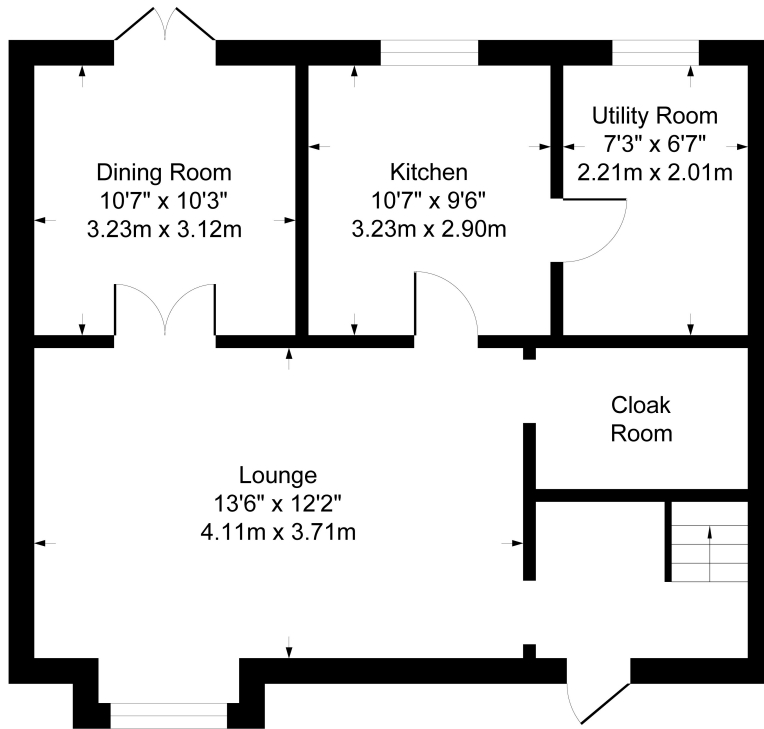
Ideally located to schools and shops with Addison Park only a short stroll as well as other sporting activities on your doorstep.



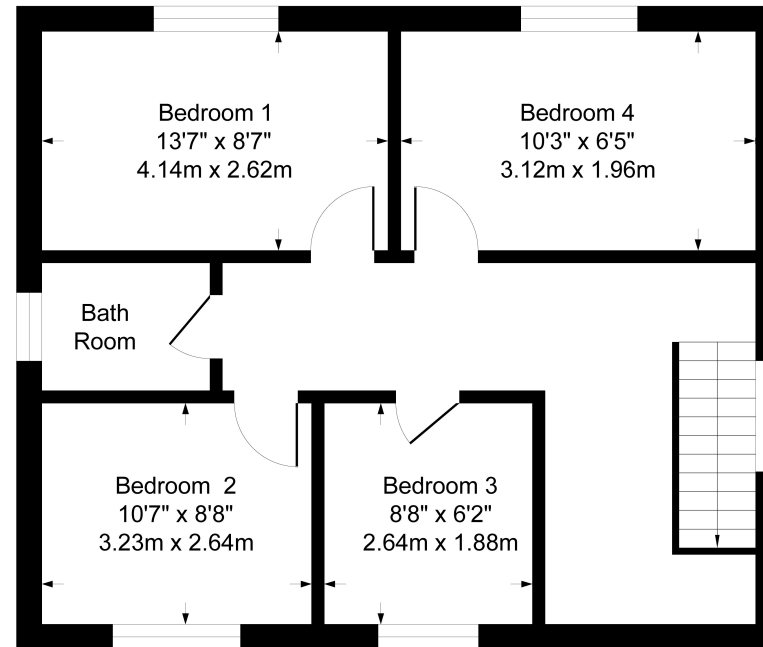
Entering the property into the hall with stairs to first floor and doors to lounge and kitchen. The cloakroom has been refitted with low level WC and pedestal wash hand basin. The lounge is to the front and has double doors which lead into the dining room with doors into garden. The kitchen has a marvellous selection of units and work surfaces, Built in oven with hob. Plumbing for dishwasher and window overlooking the garden. The utility room has cupboards and plumbing for washing machine and space for fridge/freezer. Window overlooking rear garden and door allowing access into the garden. Upstairs you have four proportional bedrooms and a white bathroom suite. Outside the rear garden is fully enclosed and mainly laid to lawn with flower borders. Gated access to side. To the front you have off road parking and access to the garage.



Approximate Gross Internal Area 1312 sq ft - 122 sq m

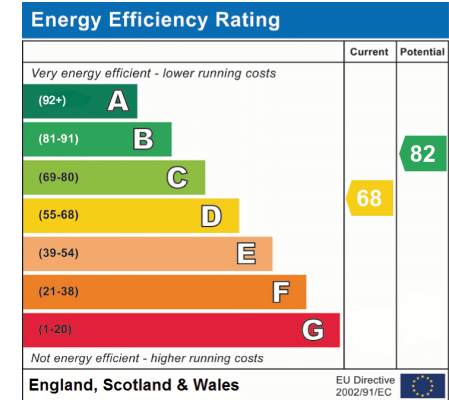


Ground Floor



First Floor

Although every attempt has been made to ensure accuracy, all measurements are approximate.
This floorplan is for illustrative purposes only and not to scale.
Measured in accordance with RICS Standards.



01234 856684 | sales@waldens.co.uk | www.waldens.co.uk | 188-190 Bedford Road, Bedford, MK42 8BL

The information contained in the property details are designed to help you decide whether you would like to view the property and to avoid wasting your time in viewing unsuitable properties. We endeavour to ensure accurate information is detailed, but we are largely guided by information supplied to us by the seller. We are unable to check all aspects of the property as this would be prohibitive. Some of the photographs are taken using a wide- angled lens. Where a floor plan has been provided, this is for guidance purposes only.

