



Beechcroft Avenue, Harrow, HA2 7JG

Cow & Co
LONDON



A well presented two double bedroom first floor apartment offering bright and spacious accommodation throughout along with a modern kitchen and bathroom.

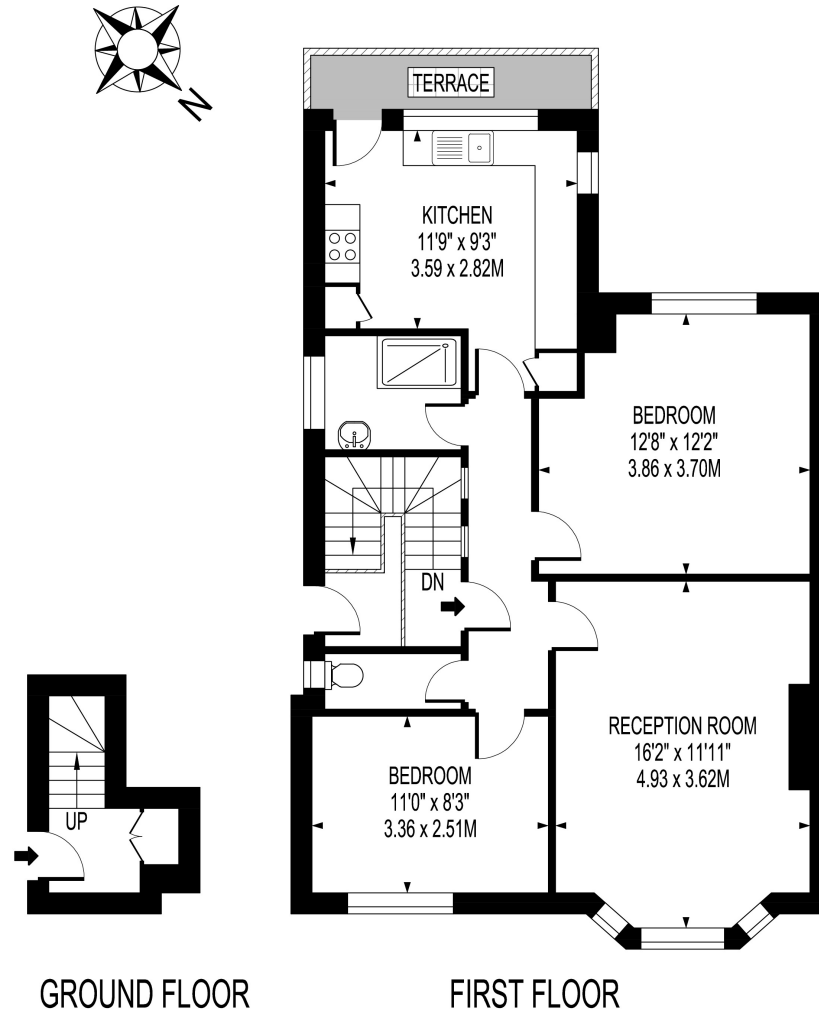
A fantastic selection of shops, restaurants and bars are available close by, while the open spaces of West Harrow Recreation Ground are close by. Local transport links are available nearby from Rayners Lane Station and North Harrow Station.



- Two bedroom first floor apartment
- Fitted kitchen with integrated appliances
- Remodelled bathroom
- Popular residential location
- Spacious accommodation throughout
- Close to local shops and amenities
- Close to local transport links and amenities
- Council Tax Included

BEECHCROFT AVENUE

APPROXIMATE GROSS INTERNAL FLOOR AREA: 728 SQ FT- 67.60 SQ M



FOR ILLUSTRATION PURPOSES ONLY

THIS FLOOR PLAN SHOULD BE USED AS A GENERAL OUTLINE FOR GUIDANCE ONLY AND DOES NOT CONSTITUTE IN WHOLE OR IN PART AN OFFER OR CONTRACT. ANY INTENDING PURCHASER OR LESSEE SHOULD SATISFY THEMSELVES BY INSPECTION, SEARCHES, ENQUIRIES AND FULL SURVEY AS TO THE CORRECTNESS OF EACH STATEMENT. ANY AREAS, MEASUREMENTS OR DISTANCES QUOTED ARE APPROXIMATE AND SHOULD NOT BE USED TO VALUE A PROPERTY OR BE THE BASIS OF ANY SALE OR LET.

Tel: 0208 065 0010
Email: thehub@cowandco-london.com
Web: cowandco-london.com

Agents note: All measurements are approximate and whilst every attempt has been made to ensure accuracy they are for general guidance only and must not be relied on. The fixture and fittings referred to have not been tested and therefore no guarantee can be given that they are in working order. Internal photographs are reproduced for general information and it must not be inferred that any item shown is included with the property.

Cow & Co
LONDON