



Ruskin Grove
Dartford
Kent
DA1

Offers in Excess of £266,000

bettermove

Ruskin Grove

Dartford

Bettermove are proud to present this 3 bedroom semi-detached house in Dartford, available with no forward chain.

This property benefits from double glazing and gas central heating, with off road parking available via the driveway.

The council tax band is B.

The interior of this well presented property comprises a spacious living room and fitted kitchen/dining room on the ground floor. The first floor consists of three bedrooms and the family bathroom. The exterior boasts a detached garage and a private rear garden, with both patio and lawn areas, perfect for enjoying the summer months.

Located in the popular town of Dartford, the property is close to a range of amenities, including shops, supermarkets, restaurants, pubs and schools. Excellent transport links can be found from Dartford Railway Station, a variety of local bus routes, and quick access to the M25.

This exciting opportunity should not be missed! All enquiries can be made through Bettermove.

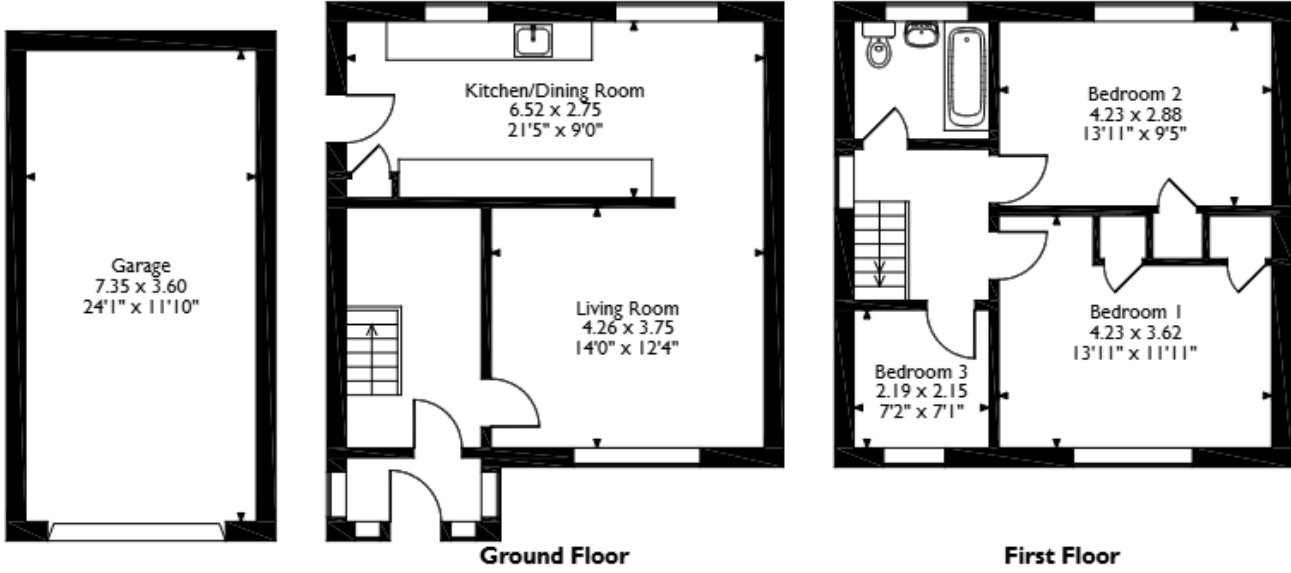
Reserve It Now

Secure your property with a £1,000 exclusivity deposit.

It's taken off the market, locked in for you, and returned to you on completion.



Ruskin Grove, Dartford, Kent
 Approximate Gross Internal Area
 Main House = 89 Sq M/958 Sq Ft
 Garage = 26 Sq M/280 Sq Ft
 Total = 115 Sq M/1238 Sq Ft



Please note that the location of doors, windows and other items are approximate and this floorplan is to be used for illustrative purposes only. Unauthorized reproduction is prohibited.

Energy Efficiency Rating		
	Current	Potential
<i>Very energy efficient - lower running costs</i>		
(92+) A		
(81-91) B		
(69-80) C		
(55-68) D	57	64
(39-54) E		
(21-38) F		
(1-20) G		
<i>Not energy efficient - higher running costs</i>		
England, Scotland & Wales	EU Directive 2002/91/EC	



20-22 Bridge End, Leeds, LS1 4DJ
t: 0330 004 0050 e: hello@bettermove.co.uk
www.bettermove.co.uk