



Two Bedroom Apartment
Conway Mews, Gillingham, Kent, ME7 5BD

£190,000
Leasehold

Conway Mews, Gillingham, Kent, ME7 5BD

£190,000

Leasehold

Description

Guide price £190,000-£210,000 Once part of a former schoolhouse, this is a truly unique and characterful two-bedroom apartment. Situated in an extremely quiet location in Brompton, this flat offers a serene retreat from the hustle and bustle of city life while maintaining close proximity to local amenities and transport links. Light floods the spacious open plan living quarters, you have two good sized bedrooms and a well-appointed bathroom. Externally a big selling point is the fact you have your own private entrance and an allocated parking space. It's an ideal choice for those seeking a harmonious blend of comfort, convenience, and community but could also be potentially an excellent investment opportunity, so call the Greyfox Rainham team to arrange your viewing.

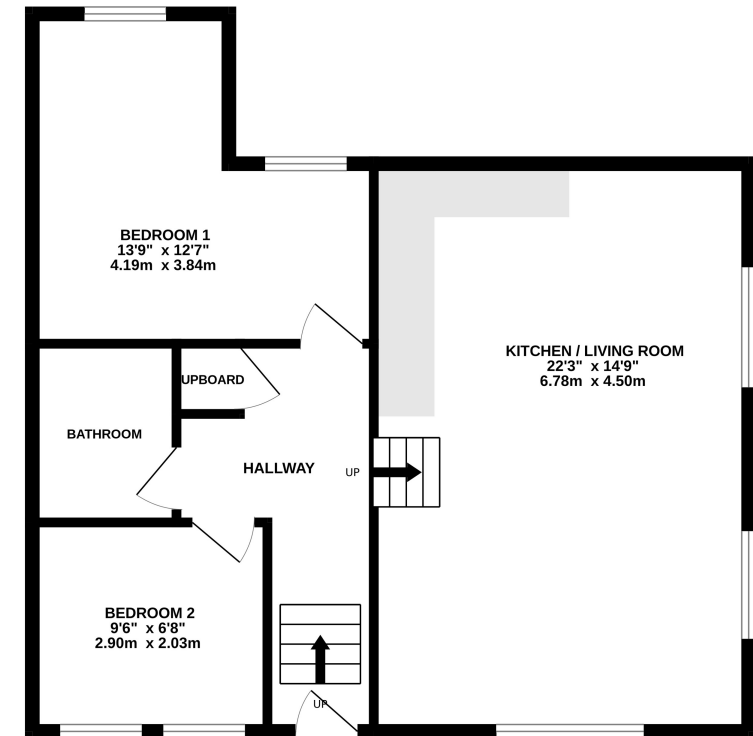
Key Features

- Two Bedroom Apartment
- Allocated Parking Space
- Private Entrance
- Open Plan Living
- Full of Charm & Character
- Bright & Airy Throughout
- Close to Local Amenities
- Feature Windows

Local Area

Gillingham is located within the Medway towns and offers railway links to central London and Ebbsfleet International and road connections to the A2/M2, M25 and M20. In addition to its town centre Gillingham offers a host of amenities including ice skating, country parks, an outdoor pool, a golf course, Medway Park Sports Centre and more.

FLOOR PLAN
712 sq.ft. (66.1 sq.m.) approx.

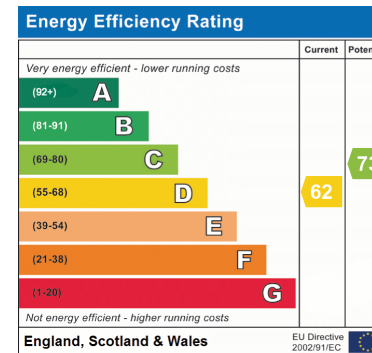
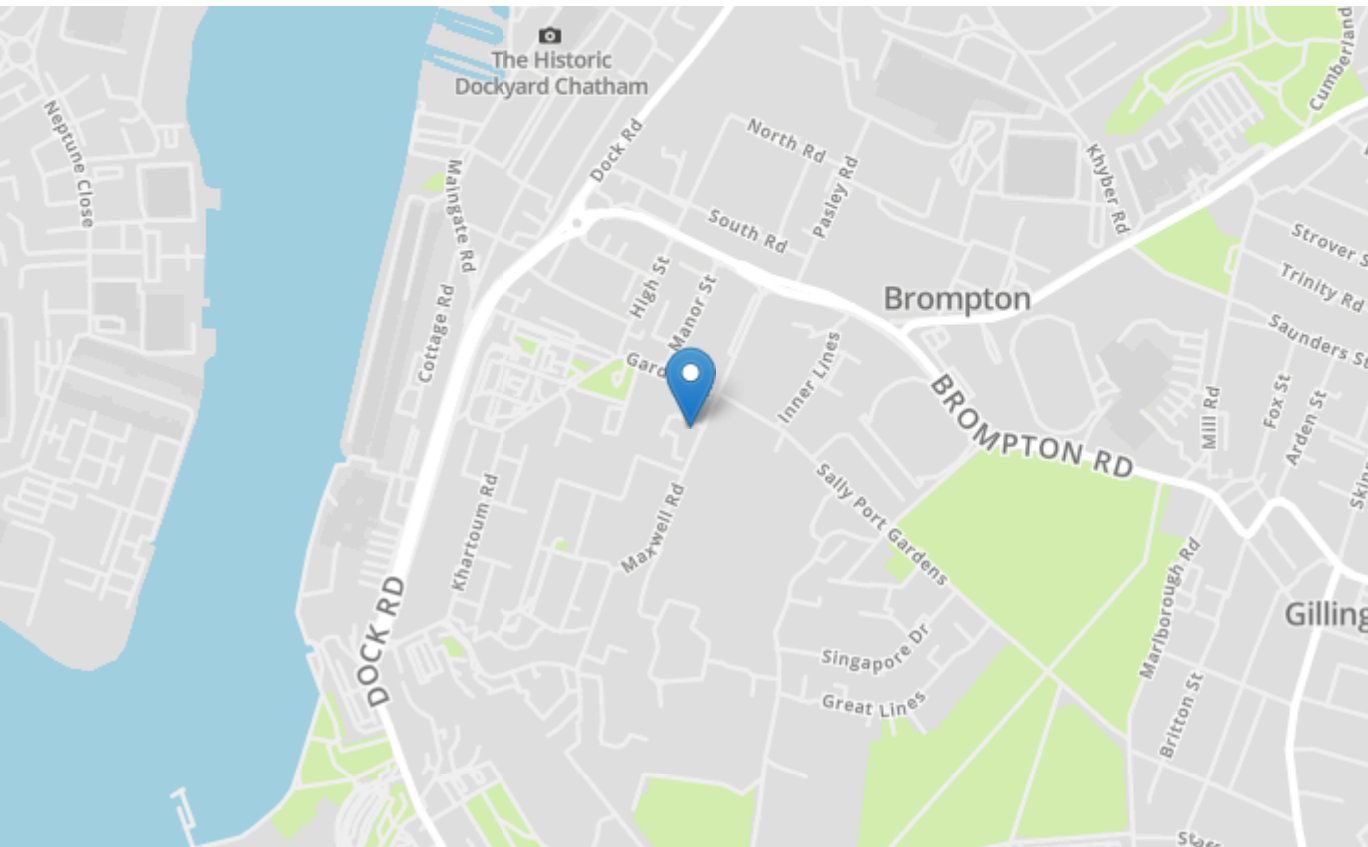


TOTAL FLOOR AREA: 712 sq.ft. (66.1 sq.m.) approx.
While every attempt has been made to ensure the accuracy of the floorplan contained here, measurements of doors, windows, rooms and any other items are approximate and no responsibility is taken for any error, omission or mis-statement. This plan is for illustrative purposes only and should be used as such by any prospective purchaser. The services, systems and appliances shown have not been tested and no guarantee as to their operability or efficiency can be given.
Made with Metropix ©2024



Property Location

Conway Mews, Gillingham, Kent, ME7 5BD



Tenure

Leasehold

Lease Term

125 yrs from 25.15.1994

Ground Rent

£200 1.1.24 - 31.12.24

Service Charge

£875 1.1.24 - 31.12.24

Local Authority

Medway

Council Tax

Band C

Greyfox Walderslade

Unit 2, Thetford House
Walderslade Village Centre
Walderslade Road
Chatham
Kent

ME5 9LR

Tel: 01634 672227 Email:
walderslade@greyfox.co.uk

Greyfox Rainham

67C High Street
Rainham
Kent
ME8 7HS

Tel: 01634 377737 Email:
rainham@greyfox.co.uk

Agent Notes

These particulars are prepared as a general guide to a broad description of the property and should not be relied upon as a statement or representation of fact and do not constitute part of an offer or contract. The seller does not make or give nor do our employees or Greyfox have authority to make or give any representation or warranty to the property. We have not carried out a structural survey and the services, appliances and specific fittings have not been tested. All photographs, measurements, floorplans and distances referred to are given as a guide only and should not be relied upon for the purchase of carpets or any other fixtures or fittings. Lease details, service charges and ground rent (where applicable) and council tax are given as a guide only and should be checked and confirmed by you on inspection and your solicitor prior to exchange of contracts. If there are any points of particular importance to you we will be pleased to check the information for you and to confirm that the property remains available. This is particularly important should you be travelling some distance to view and where statements have been made by us to the effect that the information has not been verified. The copyright of all details, photographs and floorplans remain exclusive to Greyfox. For details of our privacy policy and referral fee arrangements with any of our selected partner companies please visit <https://www.greyfox.co.uk/legal/privacy> and <https://www.greyfox.co.uk/referral-fees>.