

Prices
from
£108,500

BLOXHAM VALE

FORD CRESCENT, BANBURY, OXFORDSHIRE, OX16 9ZB

A brand new development of 2 & 3 bedroom houses

Available through Shared Ownership

 ParadigmLiving

£ Prices from £108,500 (35% share)

% Share available 35%-75%

🏠 2 & 3 bedroom houses



Bloxham Vale is a brand new development comprising of 2 & 3 bedroom houses available through Shared Ownership.

Located in the rural village of Bloxham, approx. 3 miles from Banbury.



BLOXHAM VALE KEY FEATURES

Bathroom suite and
thermostatic shower

Carpet throughout living areas &
hallway

Ceramic floor tiles in kitchen,
bathroom & downstairs toilet

Gas central heating

Allocated parking

Fitted kitchen with integrated
oven and hob

Freestanding washing machine
and fridge freezer

These particulars do not constitute any part of an offer or contract. Any intended purchasers must satisfy themselves as to the correctness of each of the statements contained in these particulars. All floor layouts may be subject to changes. The dimensions given on the plan are subject to minor variations intended for guidance only and are not to be used for carpets, appliances or items of furniture.



2 Bedroom House

Plots 236, 237, 239 & 240

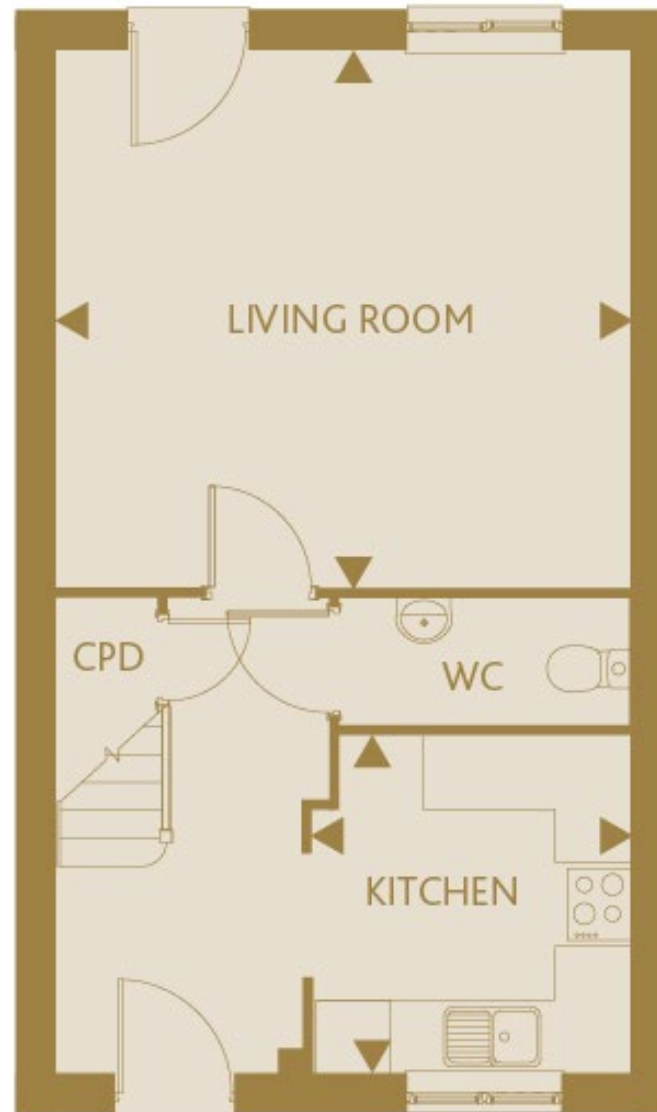
Plot 237 is handed

KITCHEN
9'0" x 8'5" 2.75m x 2.57m

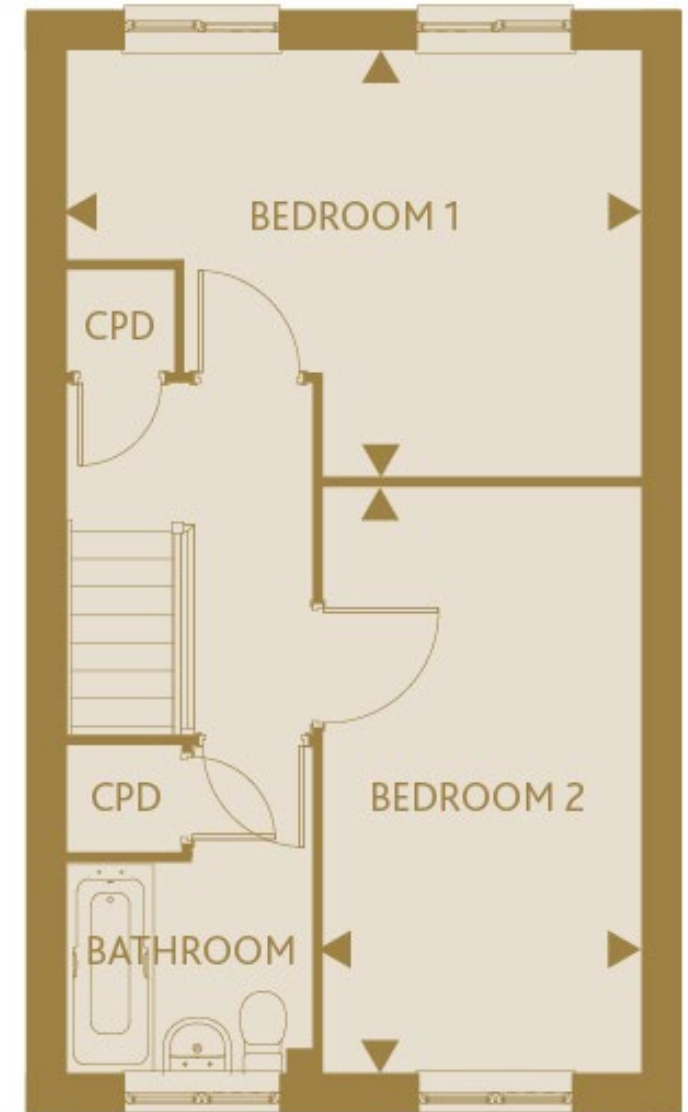
LIVING ROOM
14'3" x 15'3" 4.35m x 4.66m

BEDROOM 1
11'3" x 15'3" 3.45m x 4.66m

BEDROOM 2
15'7" x 8'5" 4.75m x 2.57m



GROUND FLOOR



FIRST FLOOR

These particulars do not constitute any part of an offer or contract. Any intended purchasers must satisfy themselves as to the correctness of each of the statements contained in these particulars. All floor layouts may be subject to changes. The dimensions given on the plan are subject to minor variations intended for guidance only and are not to be used for carpets, appliances or items of furniture.





3 Bedroom House

Plot 238

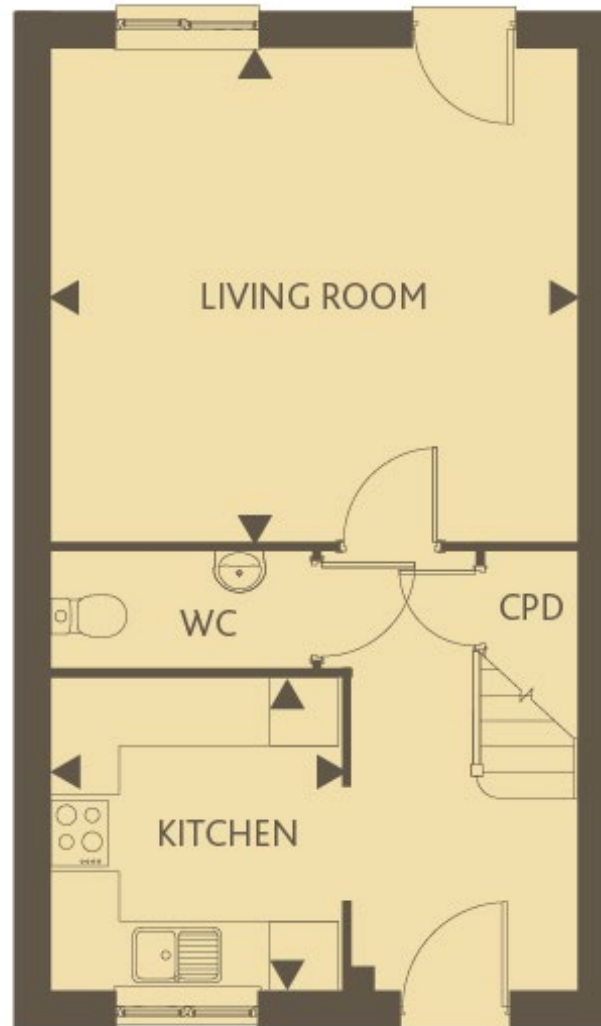
KITCHEN
9'0" x 8'5" 2.75m x 2.57m

LIVING ROOM
14'3" x 15'3" 4.35m x 4.66m

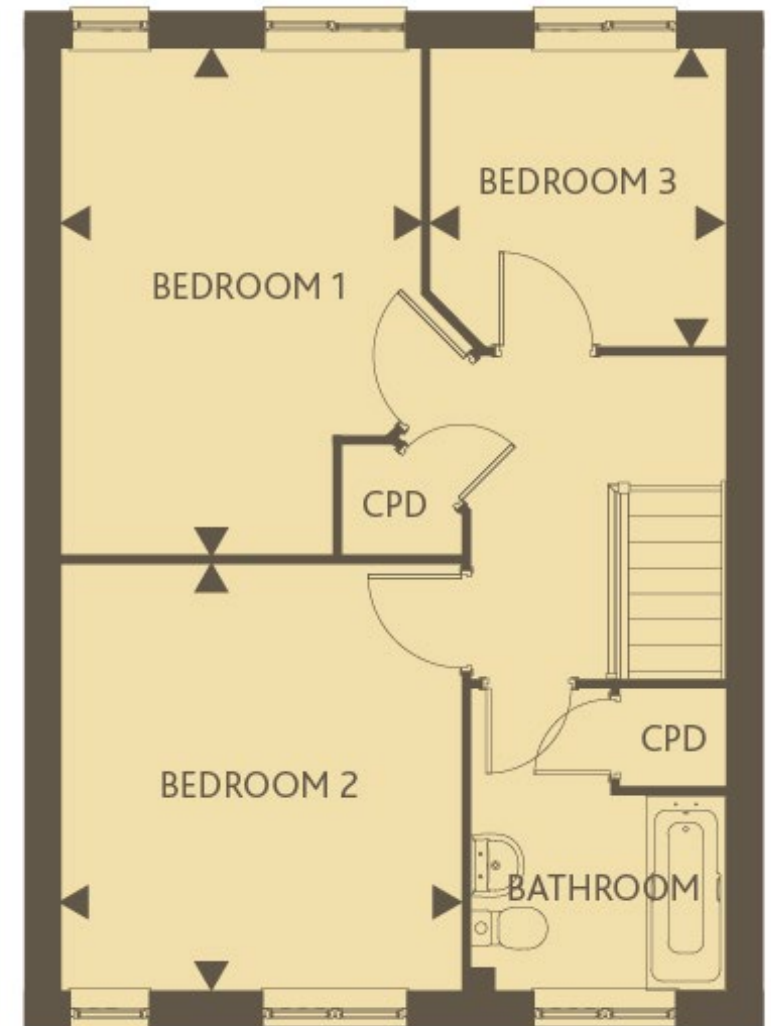
BEDROOM 1
14'6" x 10'4" 4.44m x 3.17m

BEDROOM 2
12'3" x 11'6" 3.75m x 3.52m

BEDROOM 3
8'7" x 8'6" 2.62m x 2.60m



GROUND FLOOR



FIRST FLOOR

These particulars do not constitute any part of an offer or contract. Any intended purchasers must satisfy themselves as to the correctness of each of the statements contained in these particulars. All floor layouts may be subject to changes. The dimensions given on the plan are subject to minor variations intended for guidance only and are not to be used for carpets, appliances or items of furniture.





SITE PLAN



These particulars do not constitute any part of an offer or contract. Any intended purchasers must satisfy themselves as to the correctness of each of the statements contained in these particulars. All floor layouts maybe subject to changes. The dimensions given on the plan are subject to minor variations intended for guidance only and are not be used for carpets, appliances or items of furniture.

////// ParadigmLiving

For more information

0300 303 8046

www.paradigmliving.co.uk

These particulars do not constitute any part of an offer or contract. Any intended purchasers must satisfy themselves as to the correctness of each of the statements contained in these particulars. All floor layouts maybe subject to changes. The dimensions given on the plan are subject to minor variations intended for guidance only and are not be used for carpets, appliances or items of furniture.

