

23 Rainbow Gardens, Dartford, Select, DA1 5RF
£425,000 Freehold



Description

Located on the popular Bridge Development you will find this well presented and spacious Four Bedroom Townhouse. There is an ensuite shower room to the main bedroom, family bathroom and ground WC. The living room is a good size and open plan to the modern kitchen. The rear garden is low maintenance, ideal for BBQs and entertaining with views across Dartford Marshes.

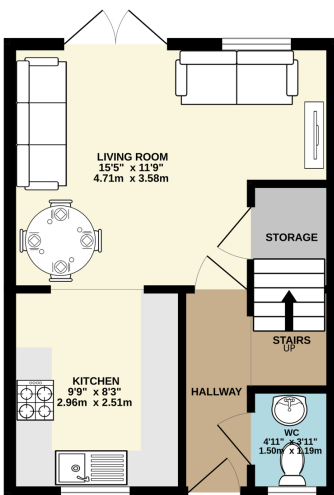
Use our online diary to request your viewing.

Located on the popular Bridge Development you will find this well presented and spacious Four Bedroom Townhouse. There is an ensuite shower room to the main bedroom, family bathroom and ground WC. The living room is a good size and open plan to the modern kitchen. The rear garden is low maintenance, ideal for BBQs and entertaining with views across Dartford Marshes.

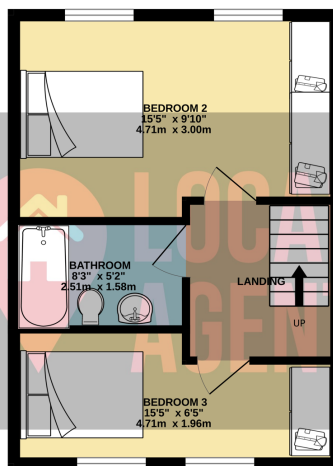
Use our online diary to request your viewing.

Situated on the popular Bridge Development, this beautifully presented four bedroom family home is only a short distance to the school, local amenities and Lake which boasts peaceful footpaths, play areas and Dartford Bridge views. The development is also a short distance from the Thames Path which runs from Kent to London, excellent for cycling and outdoor enthusiasts. This excellent location benefits from a short distance to Bluewater Shopping Centre, easy access to Darenth Valley Hospital and Darenth Country Park which has history dating back to the Saxon times, the country park has excellent woodland walks and surrounded by horses paddocks which is ideal for a rural lifestyle. The proximity to the Darenth Valley Hospital has become very popular for families for work and access and Bluewater shopping centre is only a few minutes driveway away. For London Commuters, Dartford Station is approximately 1.6 miles away of a few minutes on the Fast Track

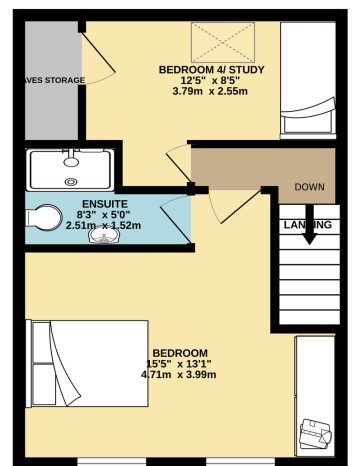
GROUND FLOOR
331 sq.ft. (30.8 sq.m.) approx.



1ST FLOOR
331 sq.ft. (30.8 sq.m.) approx.



2ND FLOOR
331 sq.ft. (30.8 sq.m.) approx.



TOTAL FLOOR AREA : 994 sq.ft. (92.3 sq.m.) approx.

Whilst every attempt has been made to ensure the accuracy of the floorplan contained here, measurements of doors, windows, rooms and any other items are approximate and no responsibility is taken for any error, omission or mis-statement. This plan is for illustrative purposes only and should be used as such by any prospective purchaser. The services, systems and appliances shown have not been tested and no guarantee as to their operability or efficiency can be given.
Made with Metropix ©2025