



£375,000 Freehold



66 St Augustines Road, Belvedere, Kent
DA17 5HH



PROPERTY DESCRIPTION

RE/MAX SELECT are delighted to offer for sale this well-presented Victorian house, situated on a popular residential road close to schools, amenities, and transportation links, including Belvedere station and Abbey Wood station (with Crossrail/Elizabeth Line and Thameslink). This property comprises 3 DOUBLE bedrooms, large living/dining room, fitted kitchen, utility room, and family bathroom.

Further benefits include double glazing, gas central heating, 45ft (approx) rear garden. Total Internal Area approx: 947.43 sq ft (88.02 sq m). CHAIN FREE





ROOM DESCRIPTIONS

Ground Floor

Entrance Hallway

Wood-effect flooring, radiator, understairs storage; carpeted stairs leading to first floor.

Living / Dining Room

7.71m x 3.24m (25' 4" x 10' 8") Wood-effect flooring, 2 radiators, electric fireplace; double glazed bay window to front; double glazed window to rear.

Kitchen

3.08m x 2.33m (10' 1" x 7' 8") Vinyl flooring, tiled walls; range of wood wall and base units with complementary worktops; stainless steel sink and drainer unit with mixer tap; space and connections for free-standing gas cooker; space and connections for fridge/freezer; space and connections for dishwasher; double glazed window; door leading to bathroom; door leading to utility room.

Utility Room

Tiled flooring; space and connections for washing machine; double glazed windows; door leading to rear garden.

Shower Room

2.34m x 2.28m (7' 8" x 7' 6") Tiled flooring, tiled walls; large walk-in shower enclosure with rainfall fitting; vanity unit with wash-hand basin and mixer tap; w/c, double glazed frosted windows.

First Floor

Landing

Carpeted; access to loft.

Bedroom

4.25m x 3.51m (13' 11" x 11' 6") Carpeted, radiator, built-in wardrobes, double glazed windows.

Bedroom

3.47m x 2.70m (11' 5" x 8' 10") Carpeted, radiator, double glazed windows.

Bedroom

3.47m x 2.70m (11' 5" x 8' 10") Carpeted, radiator, double glazed windows.

External

Front Driveway

Block paved; walled.

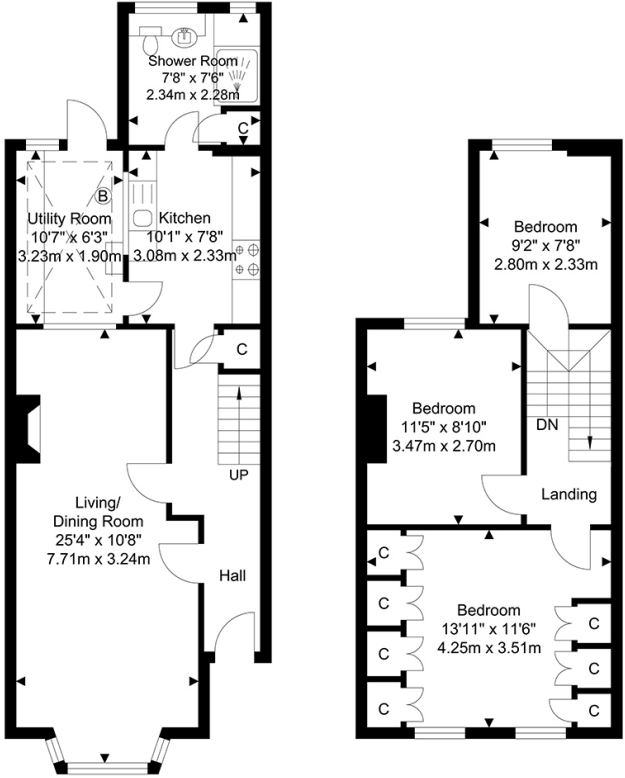
Rear Garden

Approximately 45ft; patio, lawn; shed.

Information

- 0.3 miles (approx) to Belvedere Station
- 1.0 miles (approx) to Abbey Wood Station with Crossrail/Elizabeth Line & Thameslink
- Easy access to A2 / M2
- Close to sought-after schools
- Next to Lesnes Abbey Woods
- Council Tax: Band C

FLOORPLAN



Ground Floor
Approximate Floor Area
536.58 SQ.FT.
(49.85 SQ.M.)

First Floor
Approximate Floor Area
410.85 SQ.FT.
(38.17 SQ.M.)

TOTAL APPROX FLOOR AREA 947.43 SQ. FT / 88.02 SQ. M
For Identification Purposes Only.

