



14 Lezayre Park, Ramsey, Isle of Man. IM8 2PU

Delightful, detached two bedroom modern bungalow on an attractive plot with sunny flat gardens front and rear. New shower room, conservatory, Off road parking and close to Ramsey schools and shops. Ideal property in a quiet location area.



PROPERTY DESCRIPTION

ACCOMODATION Delightful, detached bungalow, on the flat with Sunny gardens front and rear. This is a popular location within Ramsey and close to primary and secondary schools and close to the town centre and on a bus route.

The property has a cozy family lounge with woodburning stove, there are sliding doors giving access into the spacious conservatory with views over the spacious flat garden and two flagged terraced areas to relax within the garden areas. There are two double bedrooms one to front and one to rear. A modern new shower room has been installed recently and is finished to as high standard. The breakfast kitchen has an excellent range of base and wall units with windows to front and side making it a bright room. Hallway has access to the part boarded loft via a Slingsby ladder.

There is an attached single garage (approx 16'9 x 9'2') with block paved driveway for two cars. Sectional automated door. Window to side. uPVC half glazed door to the rear. Worcester Heatslave oil fired central heating boiler. Space for a washing machine and tumble dryer.

INCLUSIONS Floor coverings, Blinds

FEATURES

- Delightful Detached 2 Bed Bungalow
- Spacious Lounge
- Modern Shower Room
- Single Garage
- Spacious Flat Garden to Rear
- Two Terraced Areas
- Fitted Breakfast Kitchen
- Oil Fired Central Heating
- Desirable Location in Ramsey
- uPVC Double Glazing

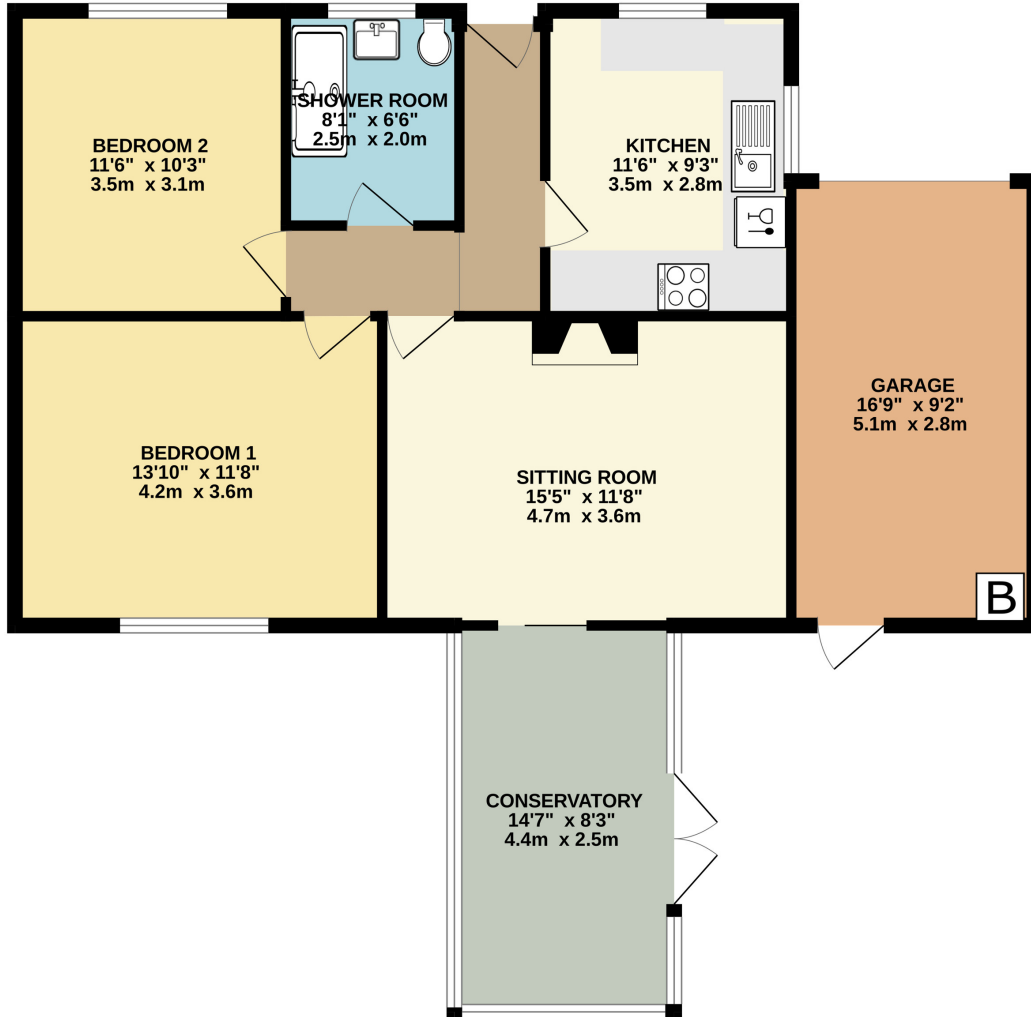


Property Images



FLOORPLAN

GROUND FLOOR
943 sq.ft. (87.6 sq.m.) approx.



DETACHED BUNGALOW

TOTAL FLOOR AREA : 943 sq.ft. (87.6 sq.m.) approx.

Whilst every attempt has been made to ensure the accuracy of the floorplan contained here, measurements of doors, windows, rooms and any other items are approximate and no responsibility is taken for any error, omission or mis-statement. This plan is for illustrative purposes only and should be used as such by any prospective purchaser. The services, systems and appliances shown have not been tested and no guarantee as to their operability or efficiency can be given.
Made with Metropix ©2024



DISCLAIMER: Whilst Manxmove Ltd believe that these details are correct, neither Manxmove Ltd or their clients guarantee their accuracy in any way. Consequently, these details are not to be used to form part of any legally binding contract. Prospective purchasers or tenants are advised to visit this property to satisfy themselves as to the correctness of these details. Please note, we use wide angle camera lenses in order to show as much of each room as possible. This is not intended to mislead any prospective purchasers or tenants in any way and an honest verbal description is always available prior to viewing if required.