



Linnet, Wells-next-the-Sea
Guide Price £500,000

BELTON DUFFEY



LINNET, 1A MILL COURT, WELLS-NEXT-THE-SEA, NORFOLK,NR23 1HF

A superb semi detached family house with spacious 3 bedroom, 2 bathroom accommodation, driveway parking and garden close to the town centre. No chain.

DESCRIPTION

Offered for sale with no onward chain, Linnet is a superb semi detached house situated on a popular cul de sac within walking distance of the town centre at the seaside town of Wells-next-the-Sea. The property was extensively remodelled and refurbished in 2015 to provide a cool contemporary interior painted in neutral tones with part rendered and part clad external elevations. The immaculately presented accommodation comprises to the ground floor an entrance hall leading to a spacious sitting room and a kitchen/breakfast room which is open plan to a half vaulted dining/living room with wide bi-fold doors leading outside to the rear garden. There is also a separate utility room and cloakroom. Upstairs, the landing leads to 3 double bedrooms, the principal also having an en suite shower room, and a family bathroom.

Further benefits include UPVC double glazed windows and doors, gas-fired central heating and extensive driveway parking to the front with a low maintenance paved rear garden.

All of this combine to make Linnet an exciting prospect for those buyers looking for a spacious family home close to all of the amenities on offer at Wells-next-the-Sea or a low maintenance second home with holiday lettings potential.

SITUATION

Wells-next-the-Sea has been a fishing and commercial port for nearly 600 years which still supports a thriving fishing fleet bringing in crabs, lobsters, mussels and whelks sold locally on the quayside and in nearby restaurants. With a growing number of leisure craft moorings, a lively, sociable sailing club, harbour and sea fishing trips, the town caters for every type of water activity including “gillying” -crabbing on the quayside. Situated a mile from the Quay, the stunning extensive sandy beach is ranked as one of the top 10 in the country by Telegraph Travel. Against a backdrop of Corsican pinewoods, the beach is home to the much publicised, iconic colourful beach huts, available to buy or rent daily.

From the top of town down to the Quay, Staithe Street provides visitors and locals with a wide variety of shops, cafes, galleries and food stores. For entertainment, the newly opened Wells Maltings offers live entertainment and exhibitions, whilst alongside the Quay, are all the usual popular traditional seaside attractions. After 3 years of restoration, the Quay also sees the welcome return of The Albatros (a former Dutch cargo ship) which is permanently moored and will reopen soon offering its own unique forms of hospitality. Locals agree with The Times in March 2021 who voted Wells as one of the best places to live. Alongside coastal scenery, wildlife and water sports, the town has a primary and secondary school – both rated Good by Ofsted - as well as a library, doctor’s surgery and hospital providing a range of accessible and integrated health and well being services.



ENTRANCE HALL

4.38m x 3.31m (14' 4" x 10' 10") at widest points.

A partly glazed composite entrance door leads from the driveway to the front of the property into the entrance hall with staircase leading up to the first floor landing. Built-in storage cupboard, radiator, window to the front and doors to the cloakroom, sitting room and kitchen.

CLOAKROOM

1.69m x 1.02m (5' 7" x 3' 4")

Pedestal wash basin with a tiled splashback, WC, radiator, extractor fan and a window to the front with obscured glass.

KITCHEN/BREAKFAST AREA

5.22m x 2.93m (17' 2" x 9' 7")

A range of gloss white base and wall units with laminate worktops incorporating a stainless steel one and a half bowl sink unit, tiled splashbacks. Breakfast bar with space under for stools, integrated double oven with a ceramic hob over and stainless steel extractor fan, integrated fridge freezer and space and plumbing for a dishwasher. Cupboard housing the gas-fired boiler, radiator and door to the utility room. Open plan to:

DINING/LIVING AREA

6.53m x 2.55m (21' 5" x 8' 4")

An impressive light and airy room with a half vaulted ceiling, radiator and wide composite oak bi-fold doors leading outside to the rear garden.

UTILITY ROOM

2.98m x 1.63m (9' 9" x 5' 4")

A range of gloss white base units with a laminate worktop incorporating a stainless steel one and a half bowl sink unit, tiled splashbacks. Spaces and plumbing for a washing machine and tumble dryer, radiator, extractor fan and a walk-in storage cupboard.

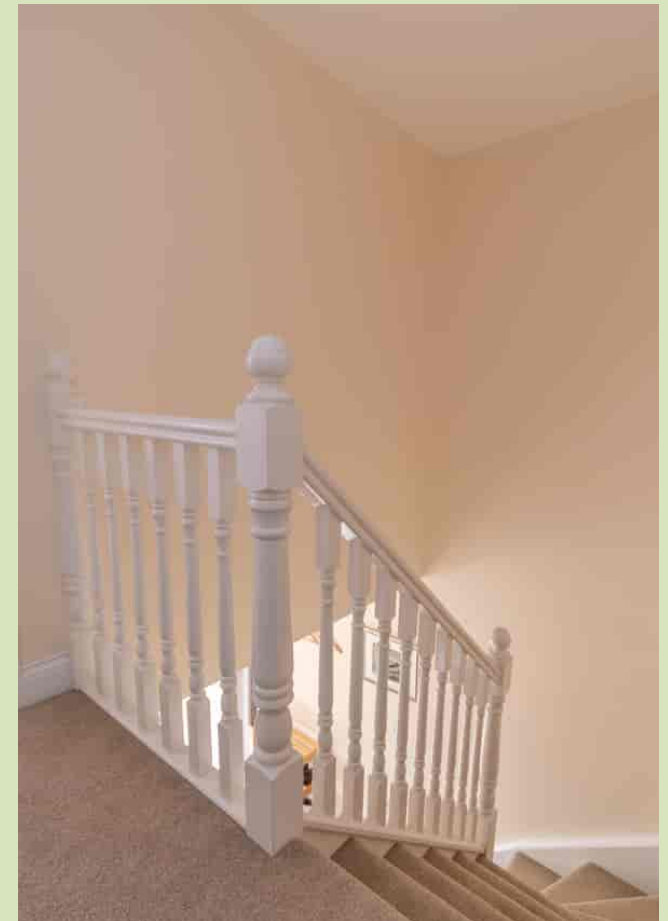
SITTING ROOM

5.38m x 3.30m (17' 8" x 10' 10")

Radiator and a window to the front.

FIRST FLOOR LANDING

Galleried landing with doors to the 3 bedrooms and family bathroom.



BEDROOM 1

4.50m x 3.30m (14' 9" x 10' 10")

Radiator, window overlooking the rear garden and a door leading into:

EN SUITE SHOWER ROOM

2.20m x 1.60m (7' 3" x 5' 3")

A white suite comprising a shower cubicle with a chrome mixer shower, pedestal wash basin and WC. Tiled splashbacks, shaver point, extractor fan and a window to the side with obscured glass.

BEDROOM 2

4.00m x 3.31m (13' 1" x 10' 10")

Radiator and a window overlooking the rear garden.

BEDROOM 3

3.31m x 2.56m (10' 10" x 8' 5")

Radiator, loft hatch and a window to the front.

FAMILY BATHROOM

2.31m x 2.11m (7' 7" x 6' 11")

A white suite comprising a panelled bath, shower cubicle with a chrome mixer shower, pedestal wash basin and WC. Tiled splashbacks, radiator, shaver point, extractor fan, loft hatch and a window to the front with obscured glass.

OUTSIDE

Linnet is set well back from the cul de sac behind a tarmac driveway that provides extensive parking for several cars, boat or caravan etc. Fenced boundary to the side with perimeter shrub borders and a paved walkway to the front entrance door with outside light.

The paved walkway continues to the side of the property where a tall timber pedestrian gate opens onto the rear garden. The garden has been paved for ease of maintenance with tall fenced and hedged boundaries, perimeter shrub borders, outside tap and lighting, timber shed.



DIRECTIONS

From Belton Duffey's Wells-next-the-Sea office, turn left up Staithe Street and turn right at the T-junction into Station Road which becomes Mill Road.

Take the second left, Southgate Close, and follow road round to the left where you will see the property a little further up, set back from the road on the left-hand side.

OTHER INFORMATION

Mains water, mains drainage and mains electricity. Gas-fired central heating to radiators. EPC Rating Band C.

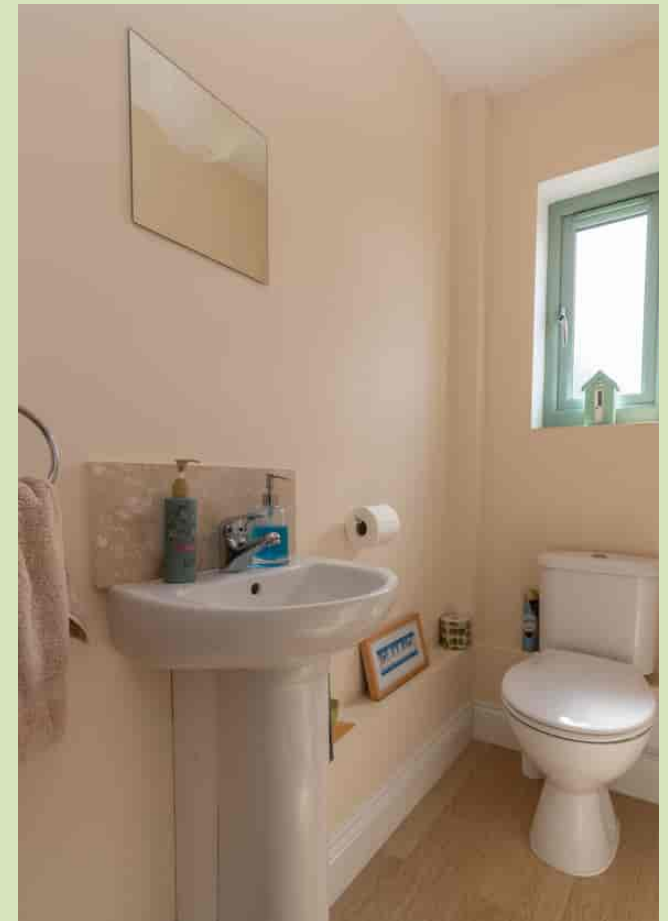
North Norfolk District Council, Holt Road, Cromer, Norfolk, NR27 9EN. Council Tax Band D.

TENURE

This property is for sale Freehold.

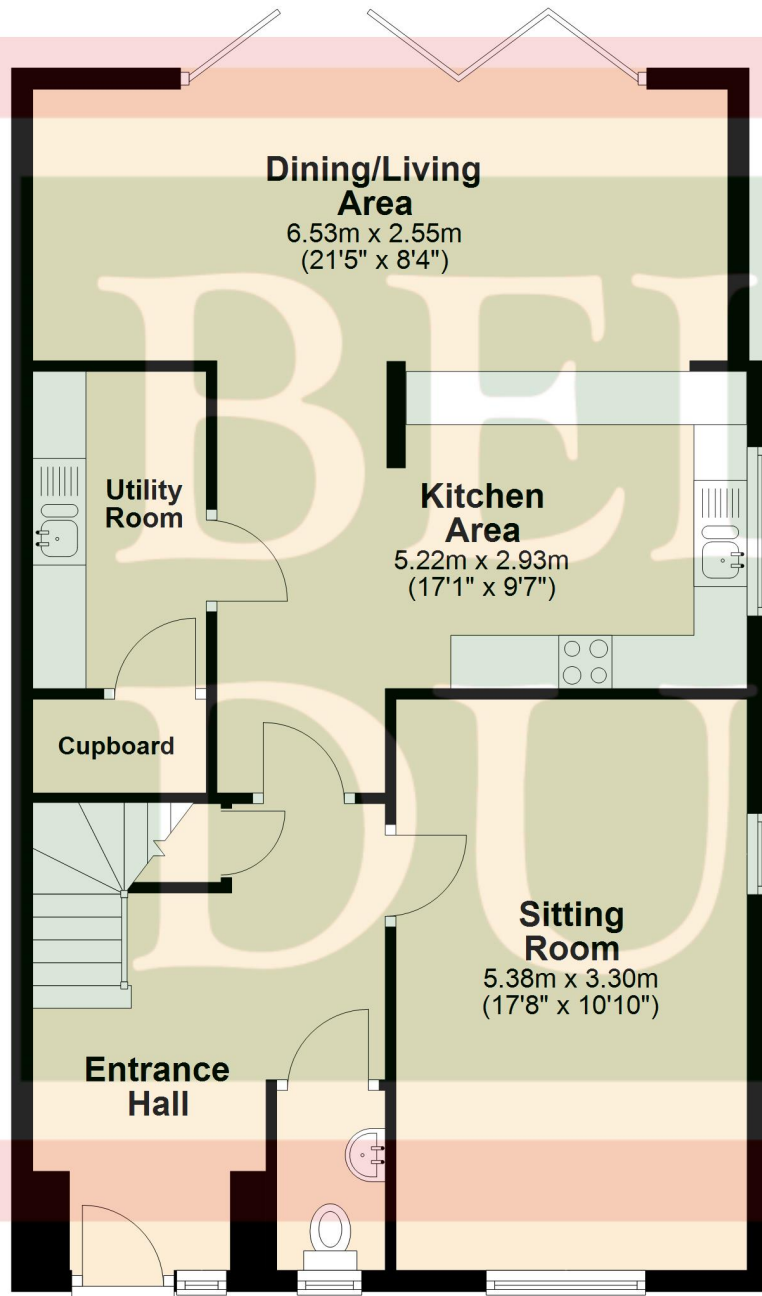
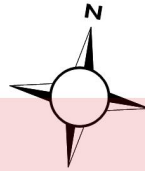
VIEWING

Strictly by appointment with the agent.



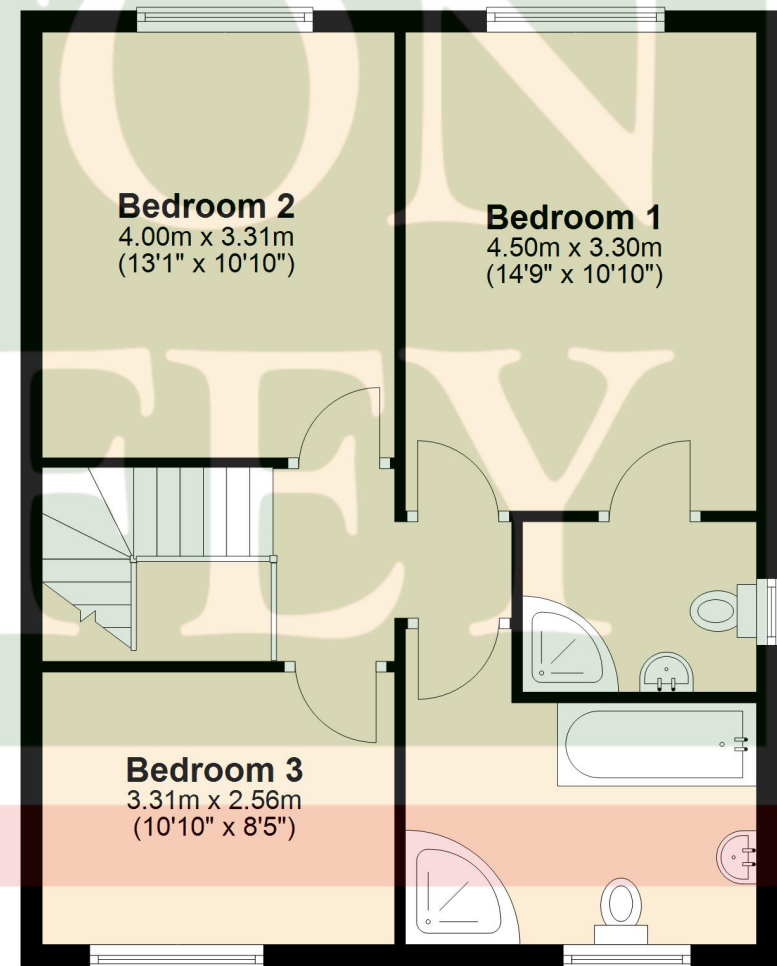
Ground Floor

Approx. 74.0 sq. metres (796.9 sq. feet)



First Floor

Approx. 57.5 sq. metres (619.3 sq. feet)



Total area: approx. 131.6 sq. metres (1416.2 sq. feet)



BELTON DUFFEY

12-16 Blackfriars Street,
King's Lynn,
Norfolk, PE30 1NN.
T: 01553 770055
E: info@beltonduffey.com

3 Market Place,
Fakenham,
Norfolk, NR21 9AS.
T: 01328 855899
E: fakenham@beltonduffey.com

26 Staithe Street,
Wells-next-the-Sea,
Norfolk, NR23 1AF.
T: 01328 710666
E: wells@beltonduffey.com

www.beltonduffey.com

IMPORTANT NOTICES: 1. Whilst these particulars have been prepared in good faith to give a fair description of the property, these do not form any part of any offer or contract nor may they be regarded as statements of representation of fact. 2. Belton Duffey have not carried out a detailed survey, nor tested the services, appliances and specific fittings. All measurements or distances given are approximate only. 3. No person in the employment of Belton Duffey has the authority to make or give representation or warranty in respect of this property. Any interested parties must satisfy themselves by inspection or otherwise as to the correctness of any information given.

