



BarrettMove



14 Sycamore Drive, Marlow, Buckinghamshire SL7 3NL
Offers in Excess of £850,000 - Freehold

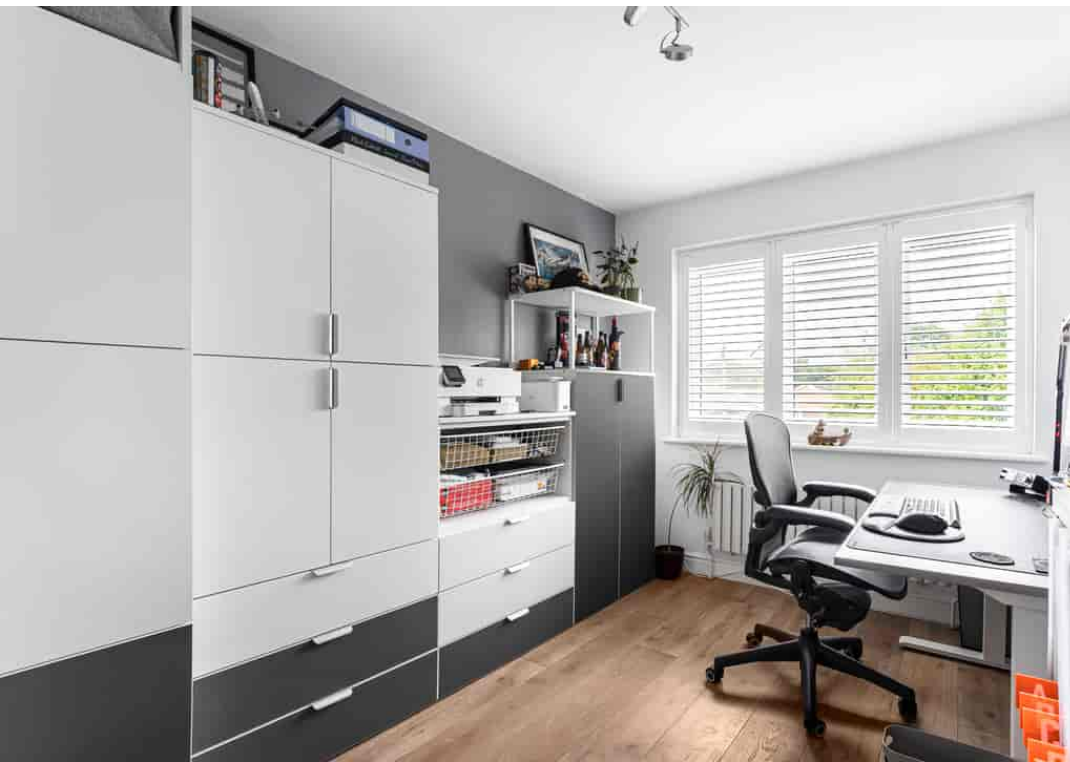


PROPERTY SUMMARY

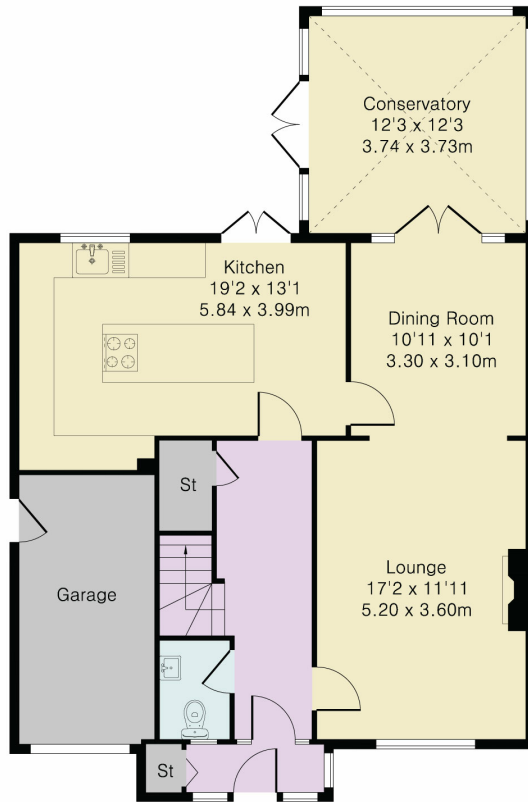
Barrett Move is delighted to present this beautifully renovated, detached, four bedroom family home in a quiet cul de sac in Marlow Bottom.

POINTS OF INTEREST

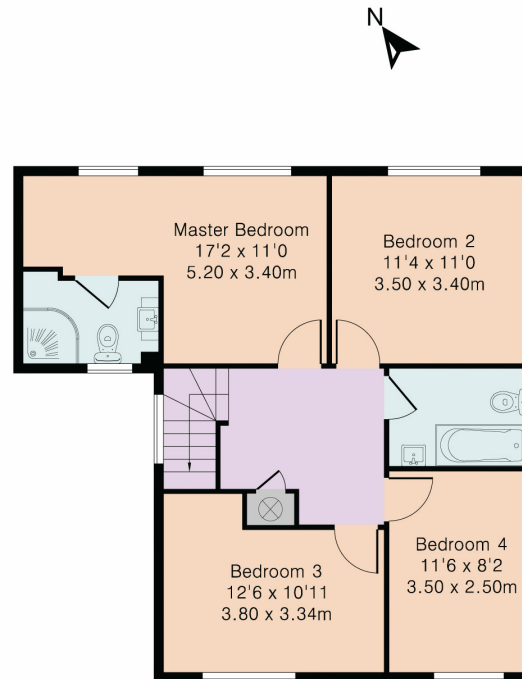
- Stunning kitchen diner with doors to the garden
- Large lounge/dining room with wood burner
- Master bedroom with ensuite
- Light and airy entrance porch
- Plantation shutters in all rooms
- Off street parking and garage
- Landscaped garden with a choice of entertaining areas
- Short walk to Burford School
- Close to village amenities and woodland walks
- In catchment for Burford primary, Sir William Borlase and Great Marlow schools



Approximate Gross Internal Area 1528 sq ft – 142 sq m
 Ground Floor Area 866 sq ft – 80 sq m
 First Floor Area 662 sq ft – 62 sq m



Ground Floor



First Floor



Although Pink Plan Ltd ensures the highest level of accuracy, measurements of doors, windows and rooms are approximate and no responsibility is taken for error, omission or misstatement. These plans are for representation purposes only as defined by RICS code of measuring practise. No guarantee is given on total square footage of the property within this plan. The figure icon is for initial guidance only and should not be relied on as a basis of valuation.



Energy Efficiency Rating		Current	Potential
<i>Very energy efficient - lower running costs</i>			
(92+)	A		94
(81-91)	B		
(69-80)	C	76	
(55-68)	D		
(39-54)	E		
(21-38)	F		
(1-20)	G		
<i>Not energy efficient - higher running costs</i>			
England, Scotland & Wales			
EU Directive 2002/91/EC			