

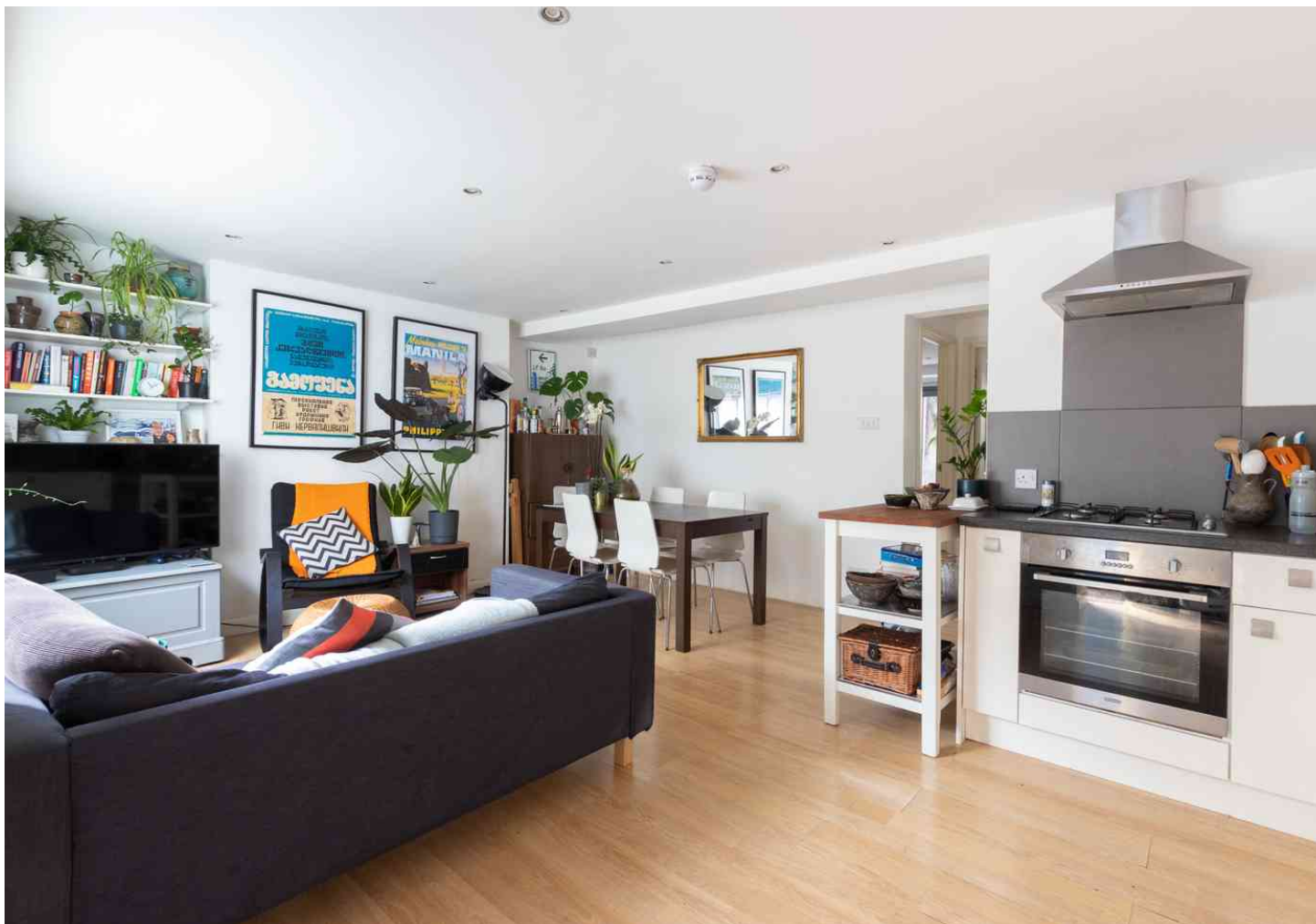
# FOR SALE

Cambridge Grove,  
Hammersmith, W6

Flat  
West London

£450,000 lh

2  1  1 

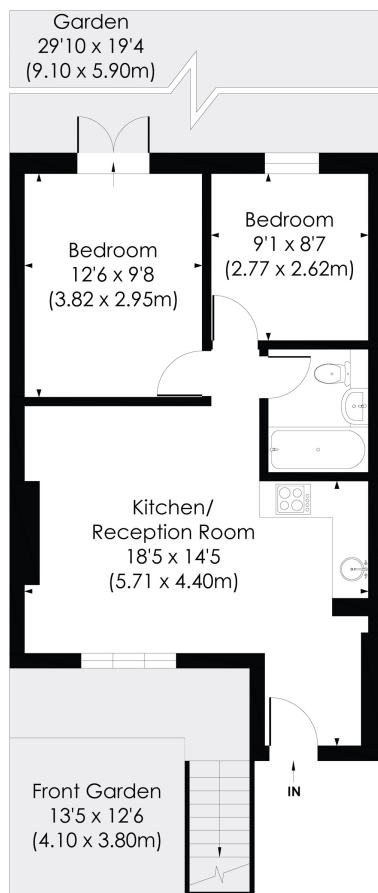


**horton  
andgarton**

SALES / LETTINGS / PROPERTY MANAGEMENT

[hortonandgarton.co.uk](https://hortonandgarton.co.uk) | Sales 020 8819 0510 | Lettings 020 8819 0511  
172 King Street, Hammersmith, W6 0QU





LOWER GROUND FLOOR

**CAMBRIDGE GROVE, W6**  
 Approx. Gross Internal Floor Area  
**519 Sq' / 48.24 SqM**

**horton  
and garton**

© Pixangle Property Marketing Ltd. info@pixangle.com Tel: 0208 870 2118

This floor plan has been prepared for the purpose of illustration only in accordance with the latest RICS code of measuring practice and is not to scale. All measurements and areas are approximate and whilst every effort has been made to ensure the accuracy of the plan contained here, no responsibility is taken for any error, omission or misstatement.



Victorian conversion flat | Two bedrooms - One bathroom | 519 Sq' - 48.24 SqM | 29' West facing garden | EPC rating C | Hammersmith



hortonandgarton.co.uk  
 Sales 020 8819 0510  
 Lettings 020 8819 0511

172 King Street, Hammersmith, W6 0QU