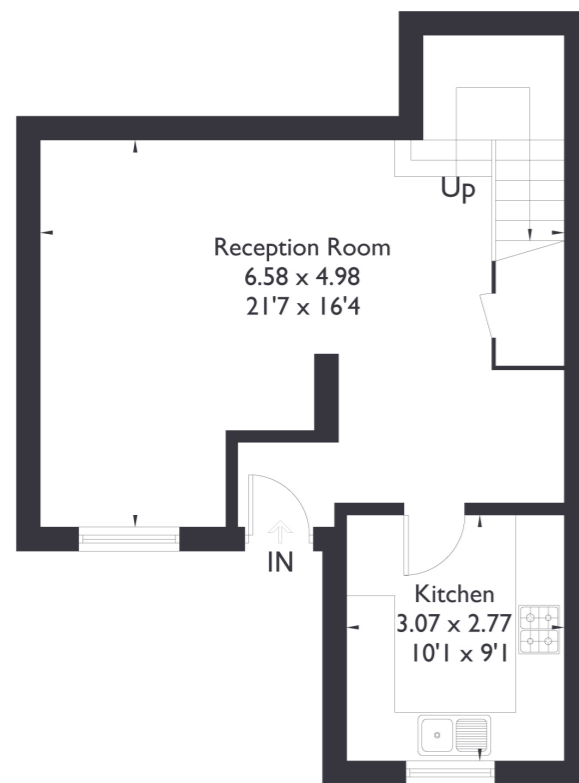
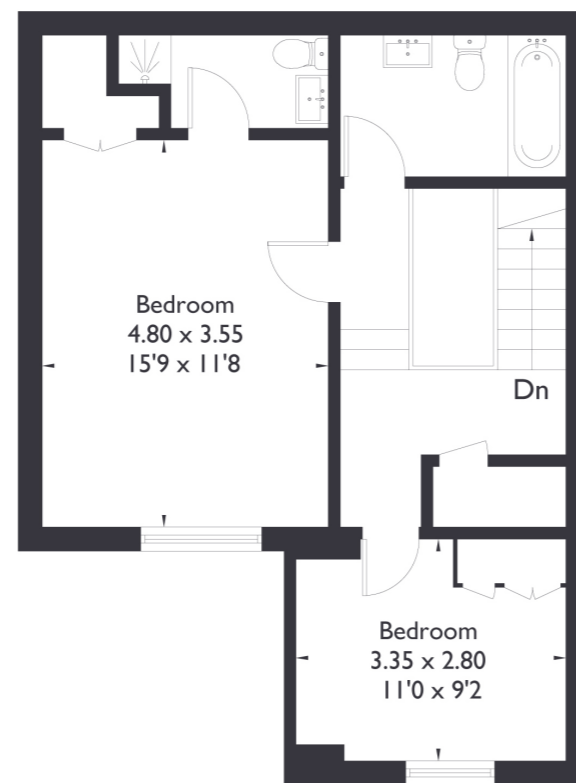


**Moorside Court, W13**

Approximate Floor Area = 90.3 sq m / 972 sq ft  
(Excluding Void)



Ground Floor



First Floor



2 BEDROOM HOUSE

**Somerset Road, W13**

£830,000

Introducing this stunning two bedroom, two bathroom property situated in a prime location. Boasting a spacious reception area and a separate kitchen, this property offers ample room for comfortable living and entertaining. Both bedrooms are generously sized doubles and feature plenty of storage space, ensuring a clutter-free environment.

FEATURES

- Leasehold
- Two Bedrooms
- Two Bathrooms
- Separate Kitchen/Diner
- Off Street Parking
- West Ealing (Elizabeth Line)
- EPC Rating C



2 BEDROOM HOUSE

## Somerset Road, W13

Boasting an abundance of natural light throughout, this home creates a bright and airy ambiance.

Conveniently located between the bustling amenities of Northfields and West Ealing, residents will have easy access to a plethora of shops, restaurants, and leisure facilities. Plus, with transportation links such as the West Ealing (Elizabeth Line 10 min walk) and Northfields Station (Piccadilly Line 10 min walk) nearby, commuting to the city or exploring the surrounding areas couldn't be easier.

Don't miss out on the opportunity to make this property your new home!

EPC Rating C.

