

FOR
SALE



Epsom Road, Epsom, Surrey KT17 1HT



Offers Over £165,000 - Leasehold 252, Chessington Road, Ewell, Epsom, KT19 9XF 0208 394 2555 sales@jacksonnoon.com

PROPERTY SUMMARY

JACKSON NOON ESTATE AGENTS are pleased to offer this ONE BEDROOM RETIREMENT FLAT built in 2000 by McCarthy & Stone with lounge/dining room (25'1 x 14'7), shower room, double glazing, WELL MAINTAINED COMMUNAL GARDENS, RESIDENTS LOUNGE and communal laundry room, guest suite (subject to availability), ON SITE MANAGER, LOCATED CLOSE TO EWELL VILLAGE.....NO CHAIN.....CALL NOW TO VIEW.

POINTS OF INTEREST

- One Bedroom First Floor Flat
- Lounge/Diner
- Double Glazing
- Communal Gardens & Parking
- Residents Lounge & Laundry Room
- No Chain



ROOM DESCRIPTIONS

Front Door to

Communal Entrance & Residents Lounge

Stairs and lift to first floor, door to

Entrance Hall

Airing cupboard

Lounge/Dining Room

25' 1" x 14' 7" (7.65m x 4.45m) Heater, double glazed window

Kitchen

7' 3" x 6' 11" (2.21m x 2.11m) Single drainer sink unit inset in roll top work surface, range of cupboards and units, space for fridge and freezer, fitted oven and hob

Bedroom 1

15' 9" x 9' 2" (4.80m x 2.79m) Heater, fitted wardrobes, double glazed window

Shower Room

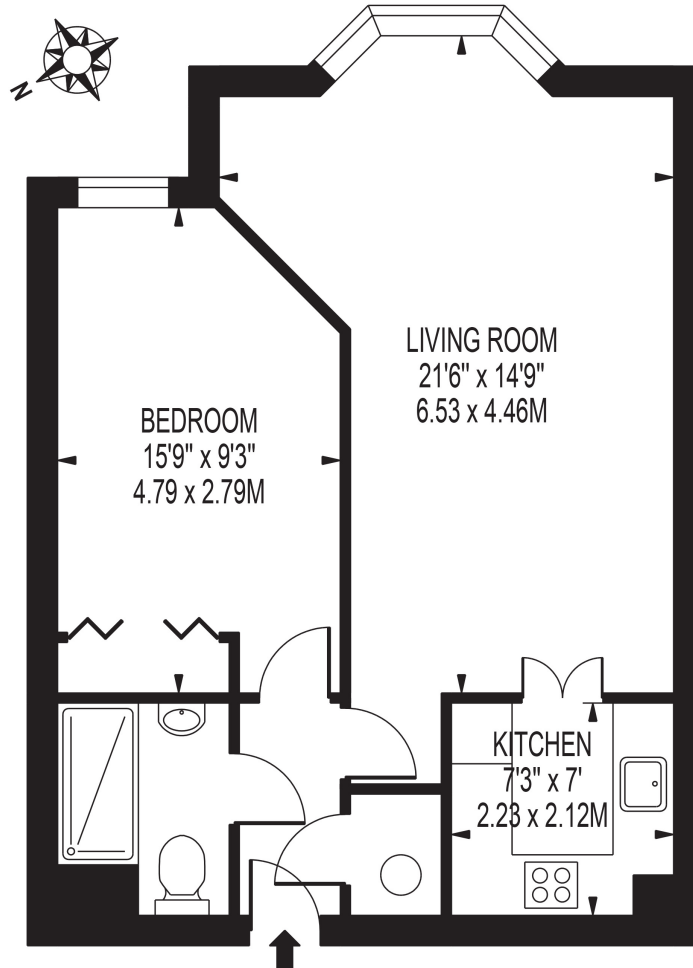
Comprising shower cubicle, fitted shower, low level wc, wash hand basin, tiled walls

Outside

Communal Gardens & Parking

REDWOOD COURT

APPROXIMATE GROSS INTERNAL FLOOR AREA: 518 SQ FT - 48.11 SQ M



FIRST FLOOR

FOR ILLUSTRATION PURPOSES ONLY

THIS FLOOR PLAN SHOULD BE USED AS A GENERAL OUTLINE FOR GUIDANCE ONLY AND DOES NOT CONSTITUTE IN WHOLE OR IN PART AN OFFER OR CONTRACT.
ANY INTENDING PURCHASER OR LESSEE SHOULD SATISFY THEMSELVES BY INSPECTION, SEARCHES, ENQUIRIES AND FULL SURVEY AS TO THE CORRECTNESS OF EACH STATEMENT.
ANY AREAS, MEASUREMENTS OR DISTANCES QUOTED ARE APPROXIMATE AND SHOULD NOT BE USED TO VALUE A PROPERTY OR BE THE BASIS OF ANY SALE OR LET.