

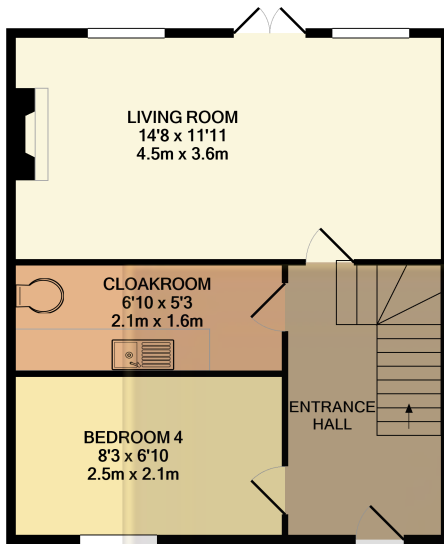


1 Parsons Road, Langley, Berkshire. SL3 7GU.

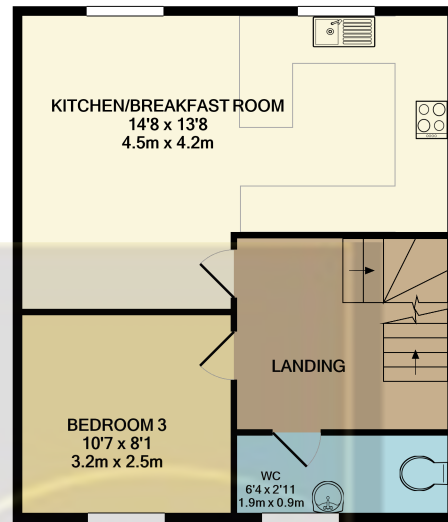
£500,000

SOLD**SOLD**SOLD No Onward Chain - Four bedroom semi-detached townhouse located on the highly sought after Parsons Road, close by to a number of Grammar schools including Langley Grammar, and within easy access of the M4 & M25. The property is in need of internal improvements and boasts an entrance hall, living room, large kitchen diner, master bedroom with ensuite, a further three bedrooms, family bathroom, two cloakrooms, private rear garden, garage, and parking. The property is to be sold with no onward chain.

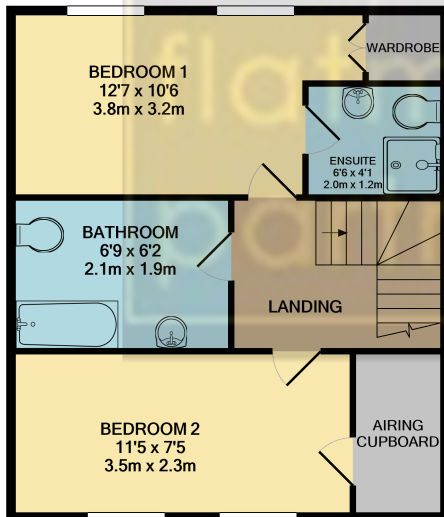
the
flatman
partnership



GROUND FLOOR



1ST FLOOR



2ND FLOOR

Whilst every attempt has been made to ensure the accuracy of the floor plan contained here, measurements of doors, windows, rooms and any other items are approximate and no responsibility is taken for any error, omission, or mis-statement. This plan is for illustrative purposes only and should be used as such by any prospective purchaser. The services, systems and appliances shown have not been tested and no guarantee as to their operability or efficiency can be given.
Made with Metropix ©2021

- Semi Detached House
- Four Bedrooms
- Four Bathrooms
- Highly Sought After Location
- Close by to Numerous Grammar

- Schools
- Garage
- No Onward Chain
- Internal Improvements Needed