



Hensley Close

Hitchin | Hertfordshire | SG4 9QF

www.stonegate-estates.co.uk



HENSLEY CLOSE

Property Description

Set within one of Hitchin's most desirable residential areas, this beautifully extended three bedroom semi-detached home offers an exceptional blend of style, comfort and convenience.

Meticulously presented throughout, the property has been thoughtfully enhanced to create a versatile home perfectly suited for modern family living.

The ground floor is both welcoming and practical, featuring a spacious entrance hall, a contemporary cloakroom with shower, and a stunning kitchen/breakfast room — superbly appointed with quality fittings and designed as the true heart of the home.

Flooded with natural light, the living spaces are complemented by stylish new flooring, creating a refined yet homely atmosphere.

Upstairs, three generous bedrooms are served by a sleek and modern family bathroom, offering comfort and relaxation for the whole household.

The exterior is equally impressive. An enclosed rear garden provides a private retreat for outdoor dining and entertaining, while the front of the property benefits from off-road parking and a garage, ensuring convenience is never compromised.

Perfectly positioned, this home lies within excellent school catchment and is just a short stroll from Hitchin's mainline station (approx. 5 minutes on foot), placing both town and city within easy reach.

A truly exceptional home, combining premium finishes with an enviable location — early viewing is highly recommended.

£595,000 Freehold





Approximate Gross Internal Area
Ground Floor = 57.5 sq m / 619 sq ft
First Floor = 37.6 sq m / 405 sq ft
Total = 95.1 sq m / 1,024 sq ft

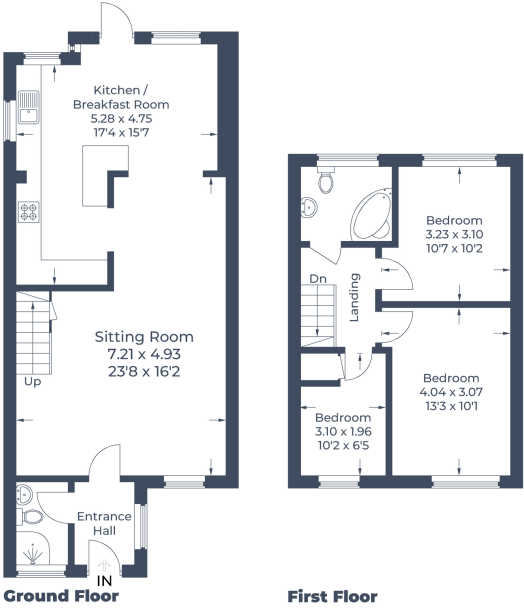


Illustration for identification purposes only,
measurements are approximate, not to scale.
© CJ Property Marketing Produced for Stonegates



- Three bedroom Semi
- SG4 9 Postcode Location
- Extended and Improved
- Cul de Sac Location
- Cloakroom and Shower Room
- Excellent School Catchment
- Walking distance to Main Line Station

EPC Rating: C

Stonegate Estate Agents

01462 438979

sales@stonegate-estates.co.uk | www.stonegate-estates.co.uk

