

FURLONG COURT

£87,500

Key Features



A First Floor

Retirement

Apartment.



Use of Communal

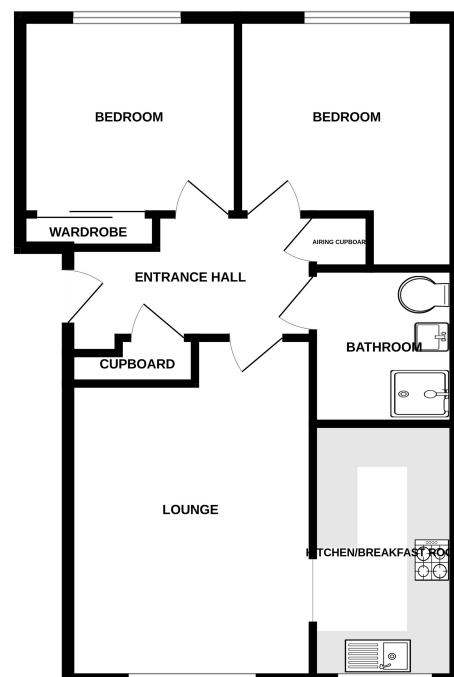
Gardens.



Residents Parking.



GROUND FLOOR
599 sq.ft. (55.7 sq.m.) approx.



TOTAL FLOOR AREA: 599 sq.ft. (55.7 sq.m.) approx.
Made with floorplan 102024