



9 Whittle Court,
Knowlhill, Milton Keynes, MK5 8FT

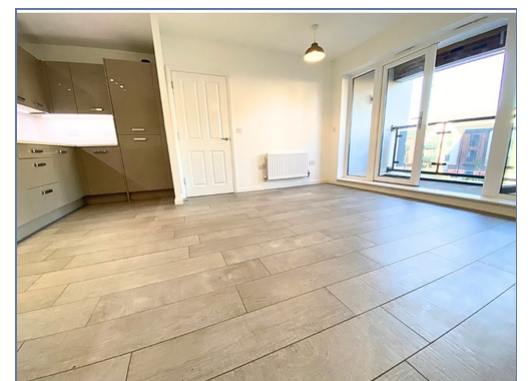
Tel: 01908 231 551 
mail@elevationstateagents.com



**Flat 3, 316 Burney Drive, Glebe Farm,
Milton Keynes, Buckinghamshire, MK17
8XY**

£255,000 Leasehold

- Two Large Double Bedroom
- Two bathrooms
- Great links to the M1
- Balcony
- Top floor apartment
- No Upper Chain
- Open Kitchen/Sitting Room With Various Upgrades
- Ideal Home For The Commuter
- LONG LEASE (994 Years Remaining)



See our full selection of properties online at www.elevationstateagents.com



We are delighted to offer this stunning two double bedroom, modern top floor apartment located in the ever sought after Glebe Farm area.

The spacious and well planned accommodation comprises entrance hall, three storage cupboards, open plan kitchen/lounge area, two double bedrooms, ensuite, bathroom and balcony.

Outside there is an allocated parking space with ample visitors spaces.

LOCATION

“Glebe Farm is in a great location with the Stables Theatre across the road, two garden centres close by and plenty of open space and parks. Great for keen runners!

The estate is a short drive to Woburn Sands high street which has plenty of independent shops and cafes such as the The Whisk, Daisy Nails and Pottery Social. A local pub to walk to which has great outdoor space and food - The Wavendon Arms.

And, it's also a 5 minute drive from Kingston Shopping centre which has Tesco, Aldi, PureGym, Boots and more.”

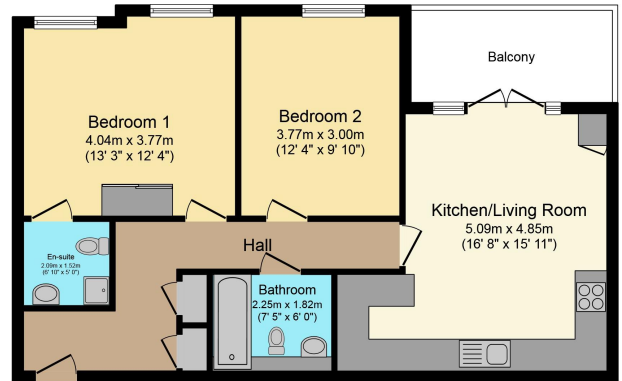
Service charges £1600 annually but already paid up until the end of the year but the current sellers.

Ground rent £1 per year

994 year lease

Disclaimer

Whilst we have endeavoured to prepare our sales particulars accurately none of the services, appliances or equipment have been tested. A buyer should satisfy themselves on such matters prior to purchase. Any measurements or distances mentioned in these particulars are for guide reference only. If such particulars are fundamental to a purchase, buyers should rely on their own enquiries. All enquiries should be directed to Elevation Estate Agents in the first instance.



Total floor area 66.0 sq. m. (711 sq. ft.) approx

This floor plan is for illustrative purposes only. It is not drawn to scale. Any measurements, floor areas (including any total floor area), openings and orientation are approximate. No details are guaranteed, they cannot be relied upon for any purpose and they do not form part of any agreement. No liability is taken for any error, omission or misstatement. A party must rely upon its own inspection(s). Plan produced for Purplebricks. Powered by www.focusagent.com