

TENNYSON APARTMENTS

£300,000

For sale is this stylish and spacious two-bedroom, two-bathroom apartment set within the iconic Saffron Square development in the heart of vibrant Croydon. Offering high-quality finishes throughout, the apartment features an open-plan living space, two generous double bedrooms and two modern bathrooms including an en-suite. Residents benefit from access to a private gym, 24-hour concierge service, with the added convenience of an on-site Tesco Express.

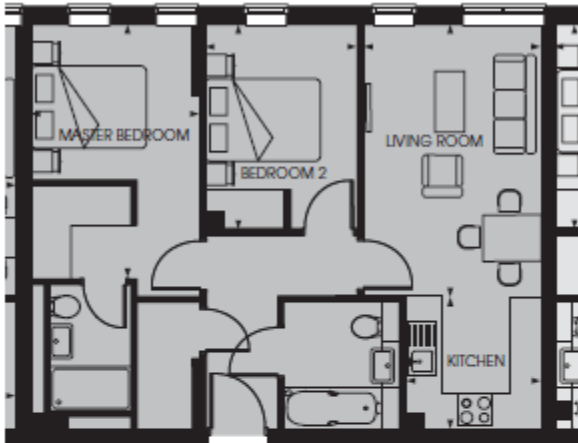
Located just moments from East Croydon Station, the property is perfectly positioned for swift access to Central London, Gatwick Airport, and beyond. This property is offered chain-free, making it an ideal opportunity for both first-time buyers and investors.

- 24 Hour Concierge
- Roof Terrace
- Close to Box Park

VIEWING BY APPOINTMENT WITH 1ST AVENUE. CALL: 020 8603 7107

**APARTMENTS, SAFFRON
CENTRAL SQUARE,
CROYDON, SURREY CRO
2FW**

£300,000



APARTMENTS

Living Room	3.05m x 4.66m	10'0" x 15'3"
Kitchen	2.33m x 2.29m	7'8" x 7'6"
Master Bedroom	2.90m x 4.36m	9'6" x 14'3"
Bedroom 2	2.60m x 3.51m	8'6" x 11'6"
TOTAL	61.1 SQM	658 SQFT

**VIEWING BY APPOINTMENT
WITH 1ST AVENUE.**

CALL: 020 8603 7107

1stavenue
Real Estate Services