

## 40 Mead Road

FOLKESTONE, Folkestone  
CT19 5QY

**£325,000 FREEHOLD**

FOR SALE WITH BURNAP + ABEL... Welcome to this stunning 3-bedroom end terraced house on Mead Road, Folkestone. This property has been fantastically extended and renovated, creating a modern and luxurious living space. Step inside and be greeted by a spacious lounge, perfect for relaxing or entertaining guests. The kitchen/diner is a true highlight of the home, with bi-folding doors leading out to the garden, bringing the outside in and creating a seamless indoor/outdoor living experience. Love to cook? The kitchen is fitted with top-of-the-line appliances and ample storage space. There is also a convenient utility room and ground floor W.C. Upstairs, you will find three well-appointed bedrooms, each offering comfortable living spaces. The family luxurious family bathroom offers an oasis to relax and unwind whilst the master bedroom boasts an en-suite bathroom for added luxury and privacy. With its prime location on Mead Road just a short walk from Folkestone Central Train Station, this house offers not just a beautiful home but also easy access to local amenities, schools, parks, and transportation links. Don't miss your chance to own this beautifully renovated home - schedule a viewing today!



**Entrance Hall**

**Lounge**

21' 4" x 10' 3" (6.50m x 3.12m)

**Kitchen/Dining Room**

15' 2" x 12' 5" (4.62m x 3.78m)

**Utility Room**

**W.C**

**First Floor Landing**

**Bedroom One**

20' 6" x 8' 3" (6.25m x 2.51m)

**En-Suite**

**Bedroom Two**

16' 3" x 5' 9" (4.95m x 1.75m) Currently used a large dressing room.

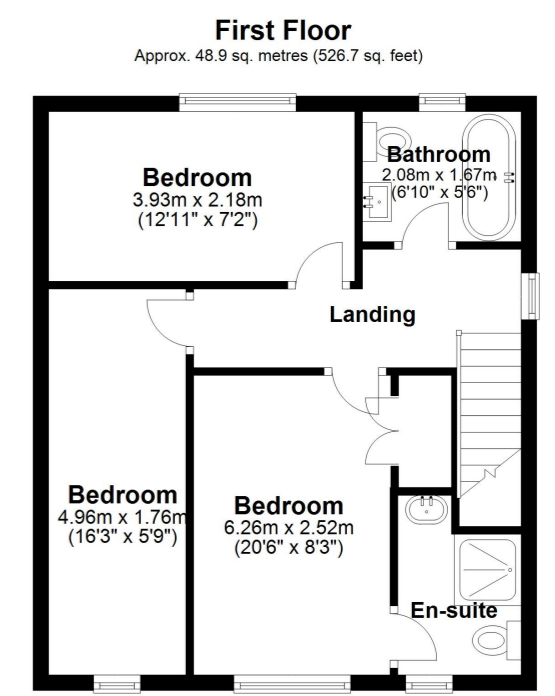
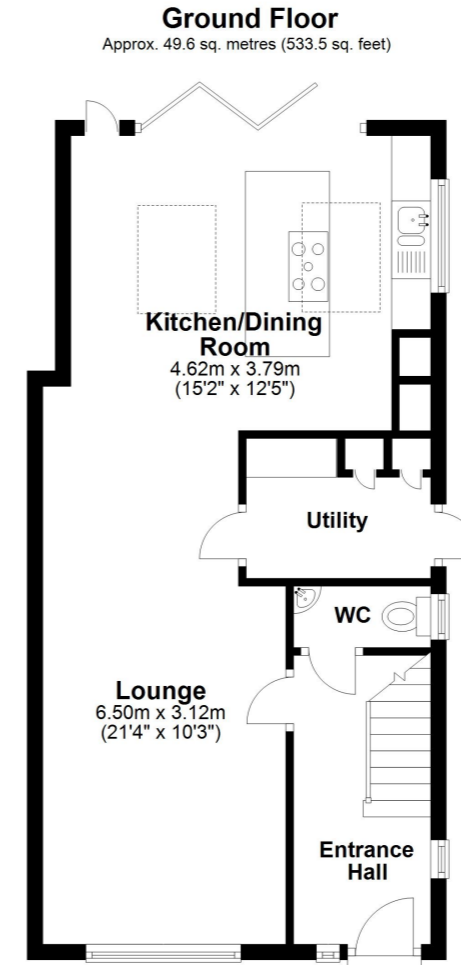
**Bedroom Three**

12' 11" x 7' 2" (3.94m x 2.18m)

**Bathroom**

6' 10" x 5' 6" (2.08m x 1.68m)

**Rear & Side Gardens**



Whilst every attempt has been made to ensure the accuracy of the floor plan contained here, measurements of doors, windows, rooms and any other items are approximate and no responsibility is taken for any error, omission or mis-statement. This plan is for illustrative purposes only and should be used as such by any prospective purchaser.  
Plan produced using PlanUp.

