



Day & Co
ESTATE AGENTS

28 Cavendish Street

Keighley

BD21 3RG



Well Head Farm, Old Oxenhope,
Oxenhope, Keighley, West
Yorkshire, BD22 9RL

£360,000

T: 01535 664609

W: www.dayandcoestateagents.co.uk

E: keighley@dayandcoestateagents.co.uk

- DOUBLE FRONTED, END STONE TERRACE
- LOUNGE & DINING KITCHEN
- Gas Central Heating & Double Glazing

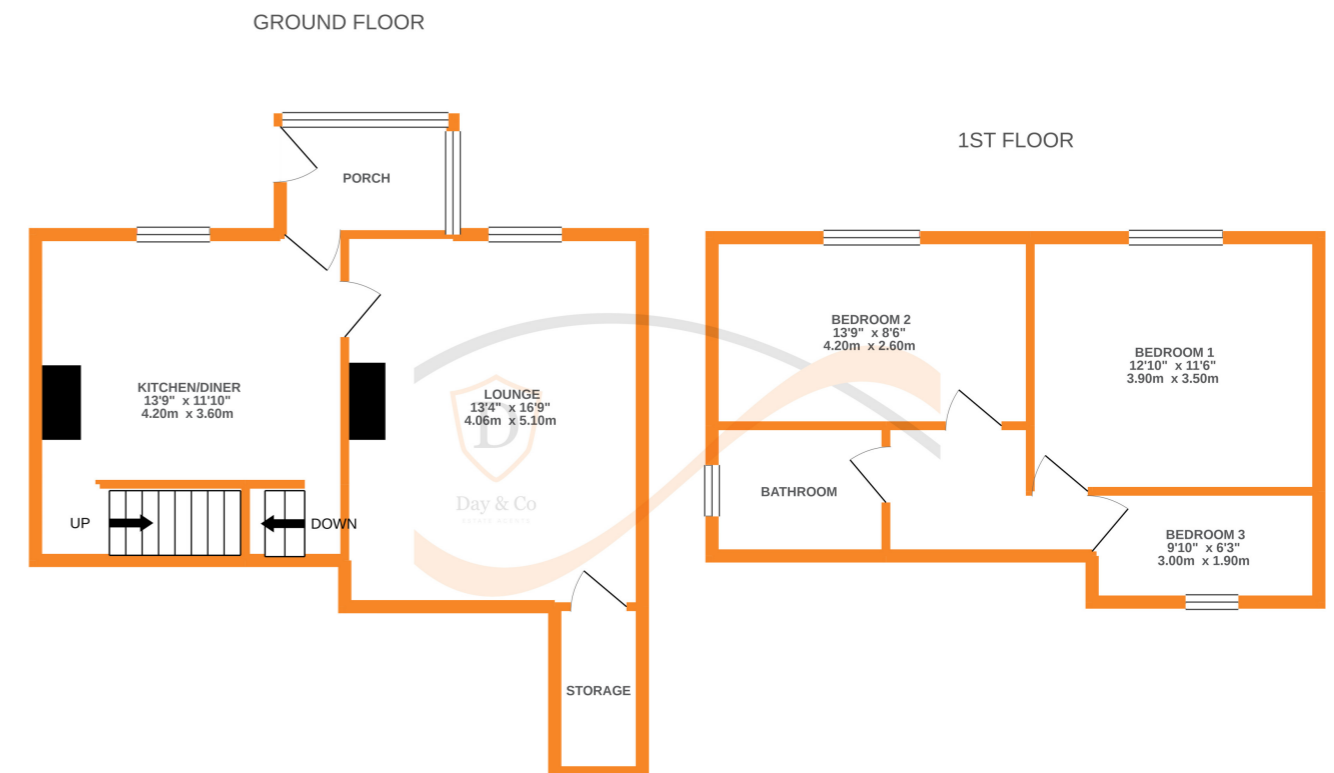
- WITH APPROX 1/2 ACRE OF LAND
- THREE BEDROOMS
- EPC RATING E

SUMMARY

** WELL HEAD FARM IS A THREE BEDROOM, DOUBLE FRONTED END STONE TERRACE PROPERTY WITH APPROXIMATELY 1/2 ACRE OF LAND, SITUATED IN THIS SEMI- RURAL LOCATION IN OXENHOPE, REQUIRES MODERNISATION, GAS CENTRAL HEATING, DOUBLE GLAZING, NO VENDOR CHAIN, EPC RATING E **

FULL DESCRIPTION

Day & Co are pleased to be marketing Well Head Farm which is a double fronted, three bedroom end stone terrace property with approximately 1/2 acre of land. This property requires some modernisation, benefits from both gas central heating, double glazing and is delightfully situated in a semi-rural location in Oxenhope. Briefly the accommodation comprises of an entrance porch, lounge with window seat to the front, storage cupboard to the rear. Dining kitchen with range of base and wall units, worktops, sink, fireplace, window to the front, access to the cellar, stairs to the first floor. First floor landing - Bedrooms one and two are both double bedrooms which enjoy distant views, bedroom three can be found at the rear and completing the accommodation is a bathroom comprising of a bath, w.c., wash basin, window to the side. Outside this property has approximately 1/2 acre of land, gate which opens onto Hanging Gate Lane. Viewing strictly by appointment via sole selling agent Day & Co. EPC Rating E.



Whilst every attempt has been made to ensure the accuracy of the floorplan contained here, measurements of doors, windows, rooms and any other items are approximate and no responsibility is taken for any error, omission or mis-statement. This plan is for illustrative purposes only and should be used as such by any prospective purchaser. The services, systems and appliances shown have not been tested and no guarantee as to their operability or efficiency can be given.
Made with Metropix ©2021