



Northway

01684 293246



3 Fairway, Northway, Tewkesbury, GL20 8QD

A traditionally built, good sized property in need of refurbishment and updating.

On the ground floor there is a dual aspect lounge and a dual aspect kitchen/dining room.

On the first floor there are 3 bedrooms and a shower room.

Outside there is a brick outbuilding with a wc.

The property has double glazed windows and a gas central heating boiler however neither the vendor nor ourselves can verify that this is in working condition or safe and it will need to be serviced and safety checked before use.

The rear garden has access to the front of the property. At the front there is a gravel drive providing off road parking.

Northway is a popular residential area of Tewkesbury benefitting from a range of convenience shops, nursery and primary schools. It has excellent public transport links into Tewkesbury.

Tewkesbury itself offers a range of excellent amenities with easy access to the motorway and rail network.



Ground Floor

Lounge 17'10"x11'5"
 Dining room 10'5"x9'8"
 Kitchen 13'9"x7'9"

First Floor

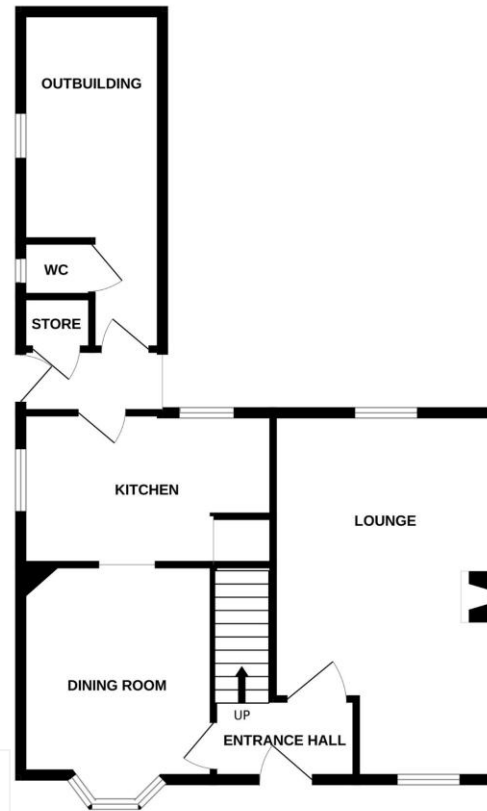
Bedroom 1 11'5"x9'5"
 Bedroom 2 10'5"x9'8"
 Bedroom 3 8'5"x8'4"
 Shower room 7'4"x5'7"

Outside

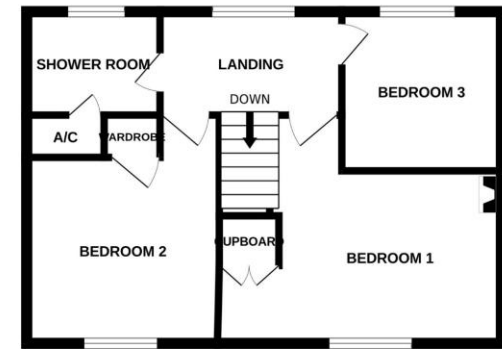
Outbuilding with store and wc

Tewkesbury Borough Council Tax Band B

GROUND FLOOR



1ST FLOOR



Guide Price £180,000 Freehold

Viewing strictly by arrangement with Engall Castle Ltd
 155 High Street Tewkesbury Gloucestershire GL20 5JP
 Office hours: Mon – Fri 9am to 5.30pm, Sat 9am to 2pm
email: sales@engallcastle.com

01684 293 246
www.engallcastle.com



Energy Efficiency Rating

11-28 G
Not energy efficient - higher running costs
 England, Scotland & Wales

This floorplan is provided for guidance only as an approximate layout of the property and should not be relied upon as a statement of fact.

Agents Note

These property details are set out as a general outline only and do not constitute any part of an Offer or Contract. Any services equipment, fittings or central heating systems have not been tested and no warranty is given or implied by Engall Castle Ltd that these are in working order. Buyers are advised to obtain verification from their solicitor or surveyor. Fixtures and fittings or other items are not included unless specifically described. All measurements, distances and areas are approximate and for guidance only and should not be relied upon for the purposes of fitting carpets or furniture etc. These property details and all statements within this document are provided without responsibility on behalf of Engall Castle Ltd or its employees or representatives and should not be relied on as statements of fact. Prospective purchasers must satisfy themselves as to the accuracy of all details pertaining to the property.

