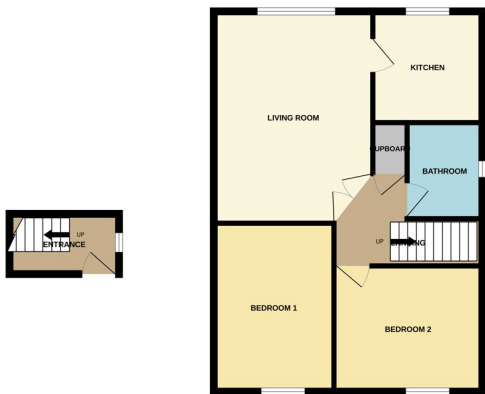




27 Burton Court, Peterborough PE1 5AF

£105,000



*** NO ONWARD CHAIN *** " This well presented maisonette is conveniently located close to the city centre and features an entrance, 2 double bedrooms, living room, bathroom, kitchen, allocated parking space and communal garden. It is also sold with no onward chain, making this property an ideal first time buy or investment opportunity. Viewings highly recommended. EPC Energy Rating - E/ Council Tax Band - A "

ENTRANCE HALL

4' 7" x 5' 3" (1.40m x 1.60m) (approx) Door to front, window to side, stairs to first floor and electric storage heater.

FIRST FLOOR

Loft access and cupboard with hot water tank.

LIVING ROOM

12' 1" x 16' 3" (3.68m x 4.95m) (approx) UPVC double glazed window to rear.

KITCHEN

7' 9" x 8' 4" (2.36m x 2.54m) (approx) Fitted with a range of base and eye level units with work surfaces over, sink with drainer unit, space for a cooker, space for a fridge/ freezer, plumbing for a washing machine and space for a tumble dryer. UPVC double glazed window to rear.

BEDROOM 1

9' 2" x 13' 1" (2.79m x 3.99m) (approx) Window to front and electric storage heater.

BEDROOM 2

9' 2" x 11' 3" (2.79m x 3.43m) (approx) Window to front and electric storage heater.

BATHROOM

5' 9" x 7' 2" (1.75m x 2.18m) (approx) Fitted with a three piece suite with low level W/C, wash hand basin, bath with shower over. UPVC double glazed window to side.

OUTSIDE

Communal garden and one allocated parking space.

AGENT NOTES

The lease details are 99 years from 24th June 1989 therefore leaving 63 years remaining. HML property management deal with the service charges.

The service charge is £1200.90 per year.

The ground rent £254.03 was the amount taken May 2024

Full details are held in branch.

AGENT NOTES

The floorplan is for illustrative purposes only. Fixtures and fittings do not represent the current state of the property. Not to scale and is meant as a guide only.

