



2 Windermere Walk, CAMBERLEY, Surrey GU15 1RP

PRICE £415,000 Freehold

Jigsaw Estates are proud to offer this semi detached property situated on a walkway position within the popular Heatherside development of Camberley. The property is located very well for schools including Heather Ridge Infants, Ravenscote and Tomlinscote Schools and is within walking distance of local playing fields, dog walking areas and amenities.

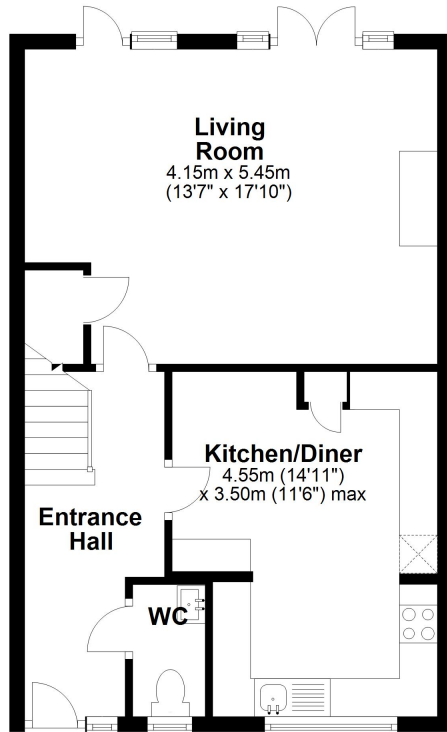
In terms of accommodation there are three bedrooms and a family bathroom upstairs. Downstairs the front has been extended so the kitchen is larger than average with a dining area. There is also a cloakroom and a large living/dining room with patio doors leading onto the rear garden. We believe the garden is south westerly facing and has artificial lawn areas along with various rockeries and steps leading down. Then via the gate, there is a path leading to the two garages in the block to the rear.



- THREE BEDROOMS
- EXTENDED KITCHEN/DINING ROOM
- TWO GARAGES IN BLOCK AT THE REAR
- WALKWAY POSITION
- UPVC DOUBLE GLAZING
- SEMI DETACHED
- POPULAR HEATHERSIDE AREA
- CLOAKROOM
- FAMILY BATHROOM
- LIVING/DINING ROOM WITH DOORS ONTO PATIO

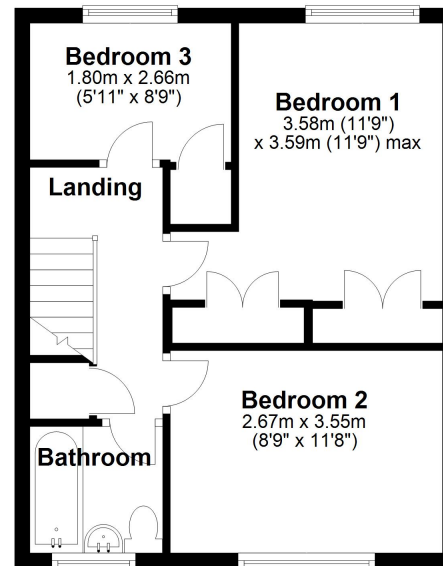
Ground Floor

Approx. 47.9 sq. metres (515.8 sq. feet)



First Floor

Approx. 38.0 sq. metres (409.5 sq. feet)



Total area: approx. 86.0 sq. metres (925.3 sq. feet)

Floorplan is for illustration purposes only. All measurements are approximate and should be verified. Total Floor Area includes any Garages shown on floorplan.
EPC and Floorplan produced by WWW.G-Whis.net
Plan produced using PlanUp.

Energy Efficiency Rating		Current	Potential
Very energy efficient - lower running costs			
(92+)	A		
(81-91)	B		84
(69-80)	C		
(55-68)	D	64	
(39-54)	E		
(21-38)	F		
(1-20)	G		
Not energy efficient - higher running costs			
England, Scotland & Wales		EU Directive 2002/91/EC	

