



Bancroft

Regal Court | Bancroft | Hitchin | Hertfordshire | SG5 1LJ

www.stonegate-estates.co.uk



BANCROFT

Property Description

An opportunity to purchase this two bedroom, first floor retirement apartment which is centrally located within Hitchin town with views over the gardens.

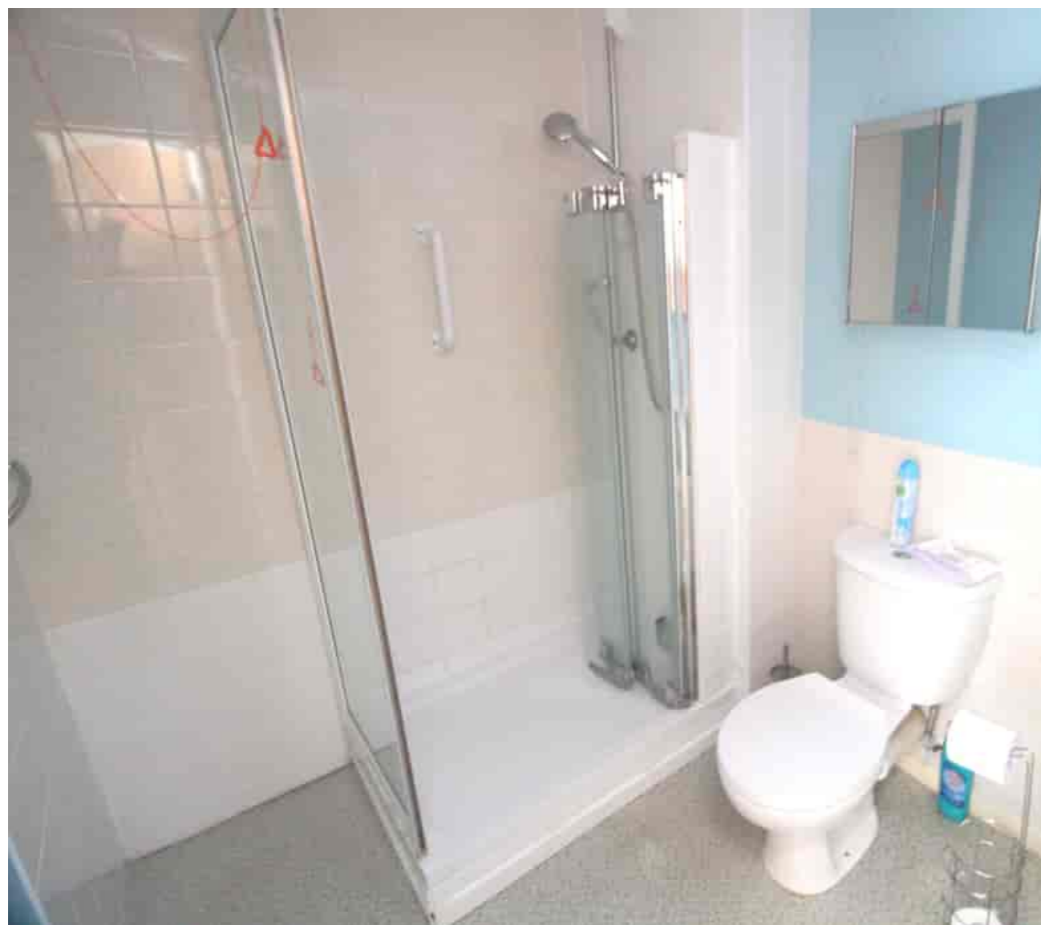
The property is being offered on a CHAIN FREE basis and comprises of a spacious living room with Juliet balcony, a refitted kitchen, a double bedroom, a single bedroom and a refitted shower room.

The development is designed to offer independent living to its residents and has a recently updated communal Lounge, conservatory and access to a garden area. Other benefits include residents parking, lift access to all floors, double glazing and a convenient location for Hitchin's local amenities.

Hitchin is renowned for its lively atmosphere created by its host of popular shops, restaurants, bars and leisure facilities. This is accompanied by convenient links into London, Cambridge and Peterborough via both direct rail link and the A1(m).

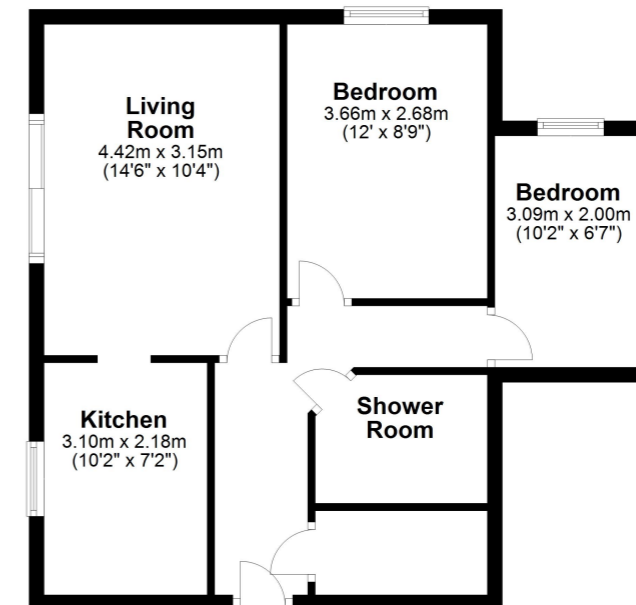
£200,000 Leasehold





Floor Plan

Approx. 51.6 sq. metres (555.9 sq. feet)



Total area: approx. 51.6 sq. metres (555.9 sq. feet)

All measurements shown are approximate and for guidance only. Garages and workshops are not included in any gross floor areas unless integral to the main building where they will be included.
Plan produced using PlanUp.



- Two Bedroom Retirement Apartment
- Town Centre Location
- Vacant Possession
- Newly Fitted Kitchen
- Shower Room
- First Floor- close to lift
- Residence Lounge
- 152 Year Lease

EPC Rating:

Stonegate Estate Agents

01462 438979

sales@stonegate-estates.co.uk | www.stonegate-estates.co.uk

