



**8 Kings Road, Maulden, Bedford, MK45
2DT**

£235,000 Freehold

- IN NEED OF REFURBISHMENT THROUGHOUT
- 3 BEDROOM SEMI-DETACHED
- DRIVEWAY WITH OFF ROAD PARKING
- PRIVATE REAR GARDEN
- CHAIN FREE
- POPULAR LOCATION
- CALL NOW TO ARRANGE A VIEWING
- GREAT POTENTIAL
- PERFECT FOR INVESTORS
- CLOSE BY AMENITIES
- EPC Rating D

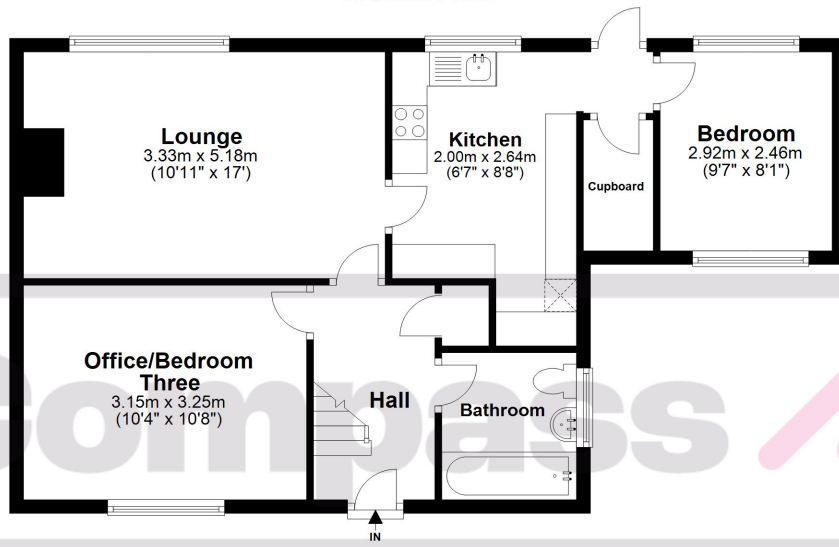




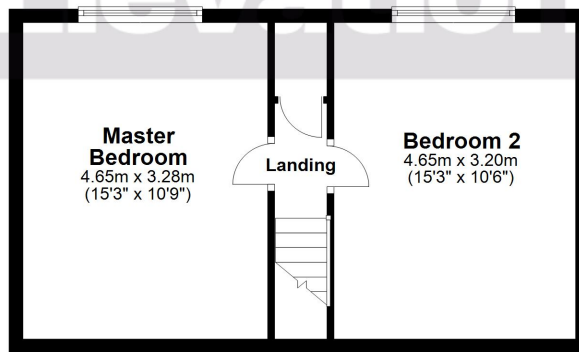
Disclaimer

Whilst we have endeavoured to prepare our sales particulars accurately none of the services, appliances or equipment have been tested. A buyer should satisfy themselves on such matters prior to purchase. Any measurements or distances mentioned in these particulars are for guide reference only. If such particulars are fundamental to a purchase, buyers should rely on their own enquiries. All enquiries should be directed to Elevation Estate Agents in the first instance.

Ground Floor



First Floor



This floor plan along with the dimensions are for guidance only and should not be used for carpet sizes, appliances or items of furniture. Plan produced using PlanUp
Plan produced using PlanUp.

