



**6 Great Mead Park, Shaggs Meadow, Lyndhurst,  
Hampshire SO43 7EQ**

**£435,000**

Situated in a convenient position within central Lyndhurst this three bedroom attached house offers scope for improvement. The property is located within a courtyard development and set back from the road.

**Tel: 02380 284411**

**[fells-gulliver.com](http://fells-gulliver.com)**

## Location

Lyndhurst is the capital of The New Forest. The pretty High Street offers an eclectic range of boutiques, eateries and public houses with a local library, village hall and visitor centre, Lyndhurst also has a doctors and dentist practice and is a short stroll from the open Forest.

## Description

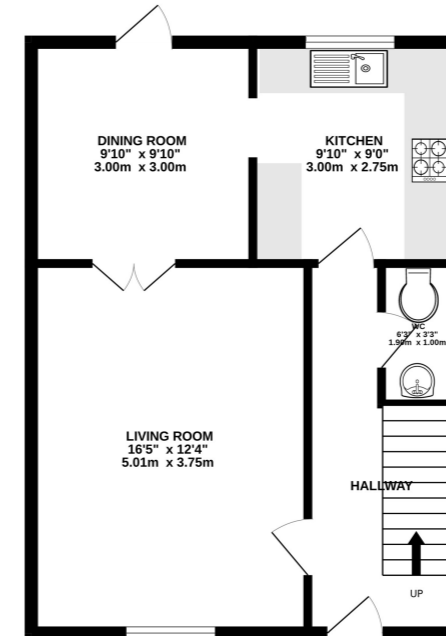
The accommodation is arranged over two floors and extends to some 1000 sq. ft. (approx.). On the ground floor is a spacious lounge, separate dining room with a kitchen. On the first floor are three well proportioned bedrooms, the principle has an en-suite and separate family bathroom. We recommend a detailed inspection to appreciate all that is on offer.

## Directional Note

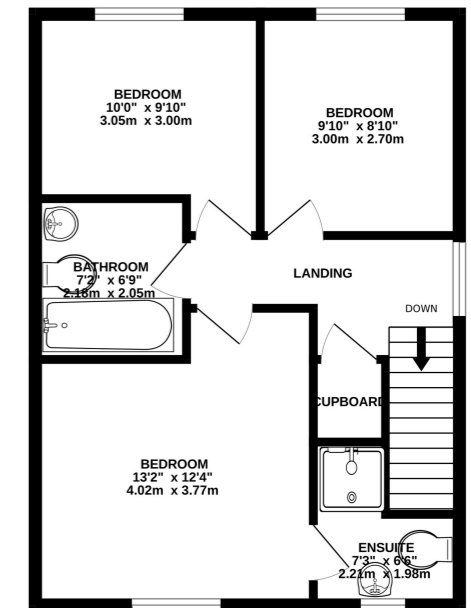
## Viewing

Strictly by prior appointment please.

GROUND FLOOR  
496 sq.ft. (46.1 sq.m.) approx.



1ST FLOOR  
496 sq.ft. (46.1 sq.m.) approx.



TOTAL FLOOR AREA: 992 sq.ft. (92.1 sq.m.) approx.

Whilst every attempt has been made to ensure the accuracy of the floorplan contained here, measurements of doors, windows, rooms and any other items are approximate and no responsibility is taken for any error, omission or mis-statement. This plan is for illustrative purposes only and should be used as such by any prospective purchaser. The services, systems and appliances shown have not been tested and no guarantee as to their operability or efficiency can be given.  
Made with Metropix ©2023

Fells Gulliver  
30 High Street  
Lyndhurst  
Hampshire  
SO43 7BG  
02380 284411  
lyndhurst@fells-gulliver.com

### Important Note

*For clarification we wish to inform prospective purchasers that these particulars have been prepared as a general guide. Their accuracy is not guaranteed and they do not form any part of a contract. We have not carried out a detailed survey nor tested the services, appliances and specific fittings. Room sizes should not be relied upon for carpets and furnishings. If there is a particular point which is of importance to you, please contact the office and we will be pleased to check the information. Do so, particularly if contemplating travelling some distance to view the property.*

### Photographs

*Photographs are reproduced for information only and do not infer that any items shown are included within the sale.*

### Special Note

*If you would like a valuation on your property, please telephone our Lyndhurst office on 02380 284411 or email lyndhurst@fells-gulliver.com*

*Our full register of properties can be seen on the internet [www.fells-gulliver.com](http://www.fells-gulliver.com)*