



**Victoria Street
Featherstone
Pontefract
West Yorkshire
WF7 5EZ**

Offers In Excess Of £88,000

bettermove

Victoria Street Pontefract

Bettermove are proud to present this 3 bedroom terraced house in Featherstone, available with no forward chain.

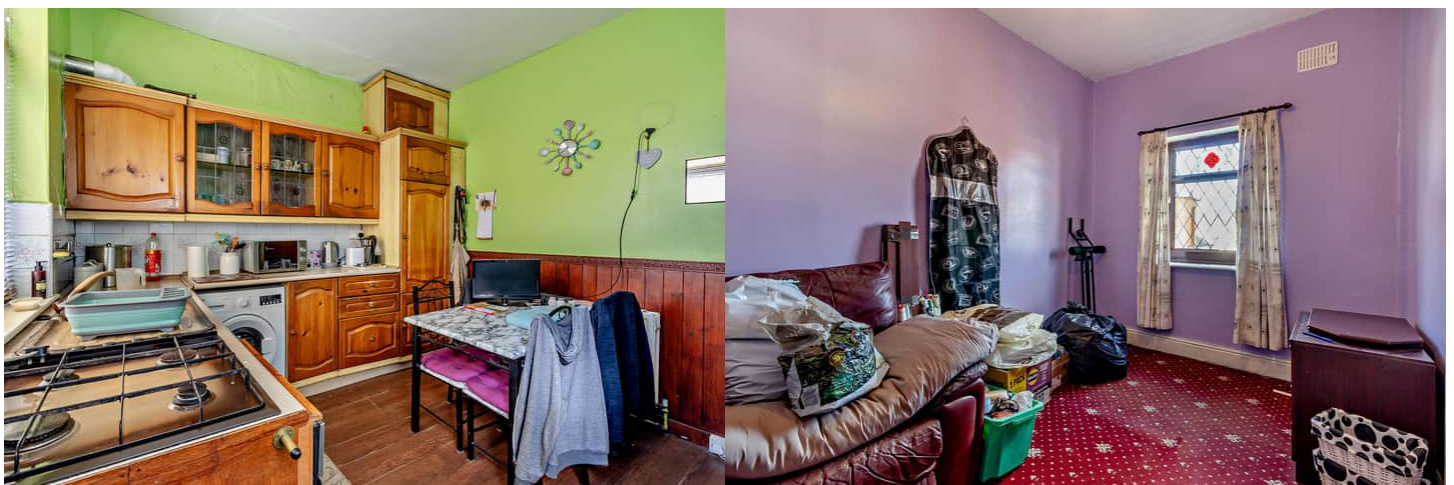
The property benefits from double glazing, gas central heating.

The council tax band is A.

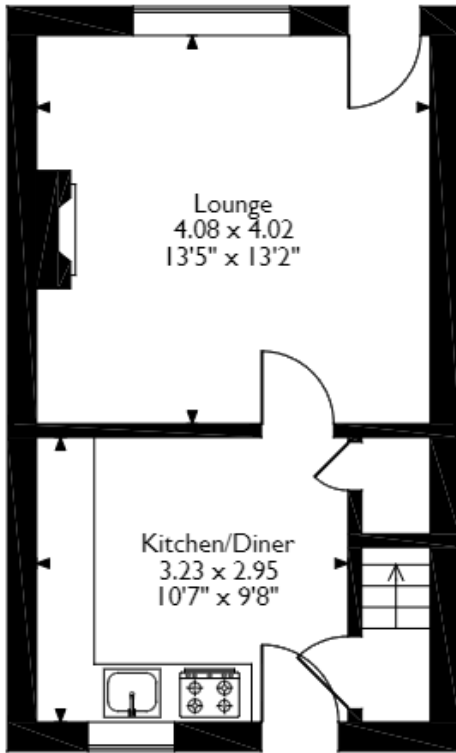
The interior of this property comprises a spacious living room and fitted kitchen diner on the ground floor. The first floor consists of 3 bedrooms and the family bathroom. The exterior boasts a private rear yard, perfect for enjoying the summer months.

Located in the popular town of Featherstone, the property is close to a range of amenities, including shops, supermarkets, restaurants and pubs. Excellent transport connections can be found from the A645, Featherstone train station and local bus routes.

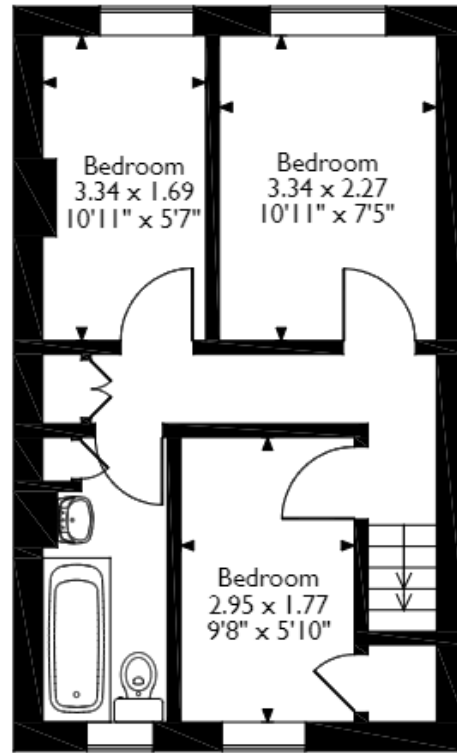
This exciting opportunity should not be missed! All enquiries can be made through Bettermove on 0330 004 0050.



Victoria Street, Featherstone, Pontefract
 Approximate Gross Internal Area
 58 Sq M/624 Sq Ft



Ground Floor



First Floor

Please note that the location of doors, windows and other items are approximate and this floorplan is to be used for illustrative purposes only. Unauthorized reproduction is prohibited.

Energy Efficiency Rating		Current	Potential
<i>Very energy efficient - lower running costs</i>			
(92+)	A		
(81-91)	B		89
(69-80)	C		
(55-68)	D	62	
(39-54)	E		
(21-38)	F		
(1-20)	G		
<i>Not energy efficient - higher running costs</i>			
England, Scotland & Wales		EU Directive 2002/91/EC	



20-22 Bridge End, Leeds, LS1 4DJ
t: 0330 004 0050 e: hello@bettermove.co.uk
www.bettermove.co.uk