



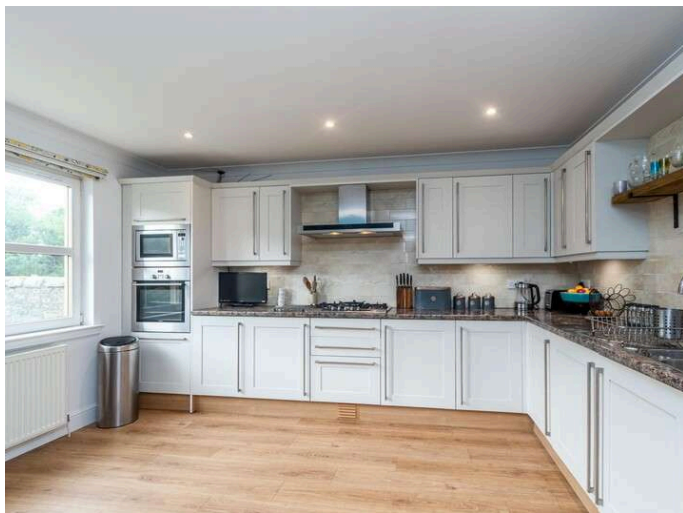
Solicitors & Estate Agents

1

Beech Place, Low Valleyfield, DUNFERMLINE, KY12 8BT



Working harder for you



4 bedrooms



2 public



2 bathrooms



- + Well-presented, executive family home offering flexible accommodation throughout and situated within the award winning hamlet of Low Valleyfield
- + Perfect family home with the 17th century Royal Burgh of Culross a short distance away
- + Enclosed neat gardens, secure for children and pets and driveway leading to garage
- + Bright and spacious entrance hall with large storage cupboard, leading to all ground floor accommodation
- + Impressive lounge to the front with feature fireplace
- + Dining kitchen
- + Formal dining room to the rear
- + Utility room and WC
- + Master bedroom with built in wardrobe space and a en suite shower room with WC and wash hand basin
- + Three further double bedrooms located off the landing, benefitting from built in wardrobe space
- + Tiled family bathroom with Jacuzzi bath, WC and wash hand basin completes the accommodation on offer
- + Neat gardens surround the property with lawn to the front, private patio to the rear and decked area, perfect for alfresco dining
- + Finished to a high standard throughout, viewing comes highly recommended to fully appreciate this superb family home

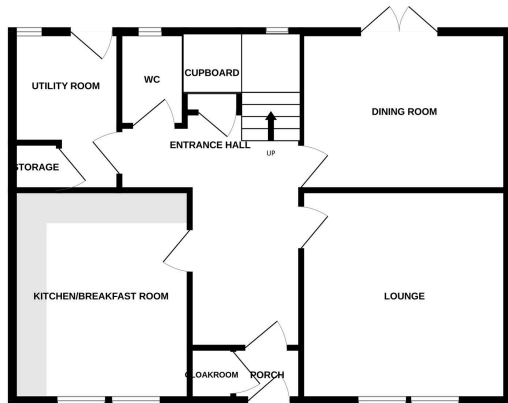




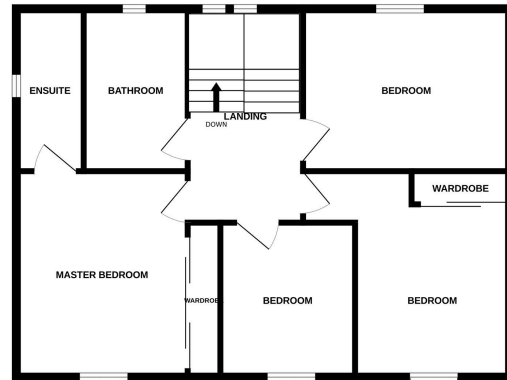




GROUND FLOOR



1ST FLOOR



Whilst every attempt has been made to ensure the accuracy of the floorplan contained here, measurements of doors, windows, rooms and any other items are approximate and no responsibility is taken for any error, omission or mis-statement. This plan is for illustrative purposes only and should be used as such by any prospective purchaser. The services, systems and appliances shown have not been tested and no guarantee as to their operability or efficiency can be given.
Made with Metropix ©2023

Living Room	4.18 m x 4.18 m / 13'9" x 13'9"	Bedroom 3	4.18 m x 3.18 m / 13'9" x 10'5"
Dining Room	4.18 m x 3.15 m / 13'9" x 10'4"	Bedroom 4	3.02 m x 2.96 m / 9'11" x 9'9"
Kitchen Dining Room	4.18 m x 3.59 m / 13'9" x 11'9"	Utility Room	3.15 m x 2.14 m / 10'4" x 7'0"
Bedroom 1	4.17 m x 3.58 m / 13'8" x 11'9"	Bathroom	3.18 m x 2.07 m / 10'5" x 6'9"
Bedroom 2	4.18 m x 4.17 m / 13'9" x 13'8"		



Sharing is caring!

6/8 Bonnar Street,
Dunfermline KY12 7JR

T: 01383 629720 F: 01383 621333, DX DF69

espc

W: maloco.co.uk