



Vincent, £385,000 - FREEHOLD
Letchworth Garden City – SG6



Satchells





The Property

This beautifully modernised three-bedroom mid-terrace home has been upgraded throughout to offer stylish, comfortable living. From the moment you step inside, you will notice the high-quality finishes, including Karndean flooring that flows seamlessly throughout the home.

The spacious lounge is a bright and welcoming space, seamlessly opening onto the large conservatory with a solid roof and double-glazed windows—creating the perfect sun trap for year-round relaxation and entertaining. The standout Wren kitchen is designed for both style and functionality, featuring a sleek breakfast bar, perfect for casual dining or entertaining. High-end integrated Bosch appliances include a microwave and oven, along with a Hotpoint washer/dryer. There is also space for a dishwasher and a large American-style fridge/freezer, making it ideal for busy households. A separate utility room provides additional convenience, while a downstairs WC adds extra practicality.

The home benefits from a brand-new heating system, complete with a new boiler and striking vertical charcoal grey radiators, ensuring warmth and efficiency.

Upstairs, three generously sized bedrooms provide plenty of space for families, guests, or a home office. The modern bathroom, fitted just two years ago, features a stylish 'P'-shaped bath with a shower over, blending luxury with practicality. The landing provides access to a partially boarded loft with lighting, offering excellent additional storage.

Noteworthy features: New heating system, Rewired throughout, Garage roof replaced, Guttering replaced, Under floor heating bathroom.

About Letchworth

Letchworth Garden City, often regarded as the world's first garden city, is a vibrant and well-connected community offering a perfect blend of urban convenience and natural beauty. Known for its tree-lined streets, green spaces, and family-friendly atmosphere, Letchworth is a sought-after location for those seeking both tranquility and easy access to modern amenities. The town boasts a variety of shops, from independent boutiques and cafes to larger retail outlets, making everyday shopping a pleasure. The pedestrianized town centre features a lively market and offers a range of supermarkets, fashion stores, and a selection of restaurants and cafes for dining and socializing.

For families, Letchworth is well-served by excellent schools, including a range of primary and secondary schools, all known for their strong academic performance and community focus. The town also offers a variety of parks and recreational facilities, providing plenty of space for outdoor activities and leisure. Transport links from Letchworth are superb, with a mainline train station offering regular services into London King's Cross in under 40 minutes, making it ideal for commuters. The town is also well-connected by road, with easy access to the A1(M) for travel to surrounding areas.





Step outside

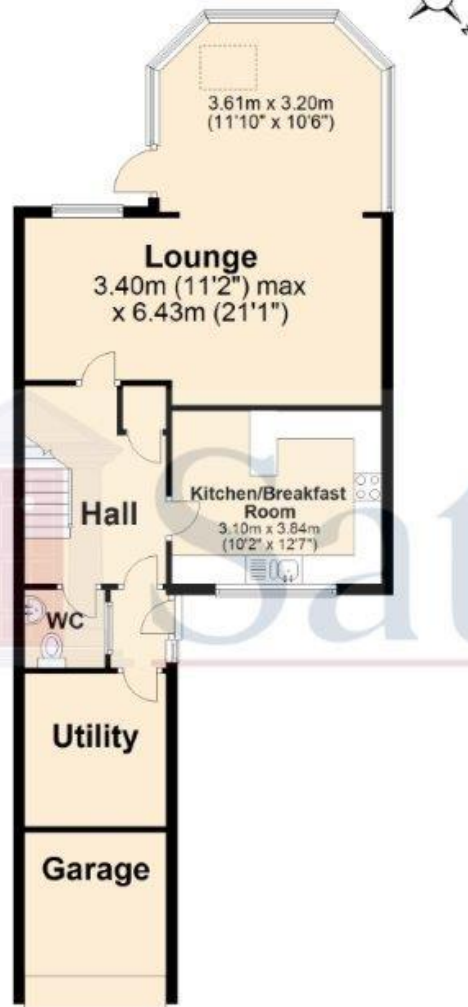
Step outside to discover a beautifully landscaped south-west facing garden, perfect for making the most of the afternoon and evening sun. The raised lawn area, bordered by decorative stone and wooden sleepers, creates a stylish and inviting outdoor space. A paved patio provides an ideal spot for alfresco dining or relaxing with a coffee, while the solid-roof conservatory seamlessly extends the living space into the garden, making it perfect for year-round use.

With high fencing for added privacy, this garden feels like a secluded retreat. The mature tree and carefully placed planters bring a touch of nature, while the south-west orientation ensures plenty of natural light throughout the day.

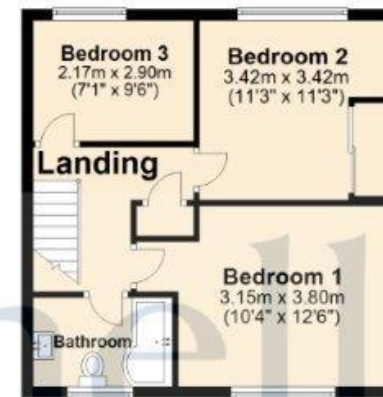
This private and sunny outdoor space is ideal for entertaining, unwinding, or simply enjoying the fresh air. Plus, with a garage for additional storage, practicality meets style in this delightful home.



Ground Floor



First Floor



For illustrative purposes only - NOT TO SCALE - Measurements shown are approximate.
The size and position of doors, windows, appliances and other features are approximate.

Plan produced using PlanUp.



Satchells
Station Place, Letchworth Garden City, Hertfordshire, SG6 3AQ.
Tel: +44 (0)1462 480077
E mail: letchworth@satchells.co.uk www.satchells.com

