



Savile Park Street
Halifax
West Yorkshire
HX1

Offers In Excess Of £390,000

bettermove

Savile Park Street Halifax

A SPACIOUS terraced in Halifax, available TENANTED for IMMEDIATE investment and CHAIN FREE. Call to enquire!

Bettermove are proud to present this 9 bedroom terraced house. Available with no forward chain.

The property is currently tenanted and it will be sold with tenants in situ for immediate investment. Rental yields can be obtained through Bettermove.

The property benefits from double glazing, gas central heating throughout and has on street parking available.

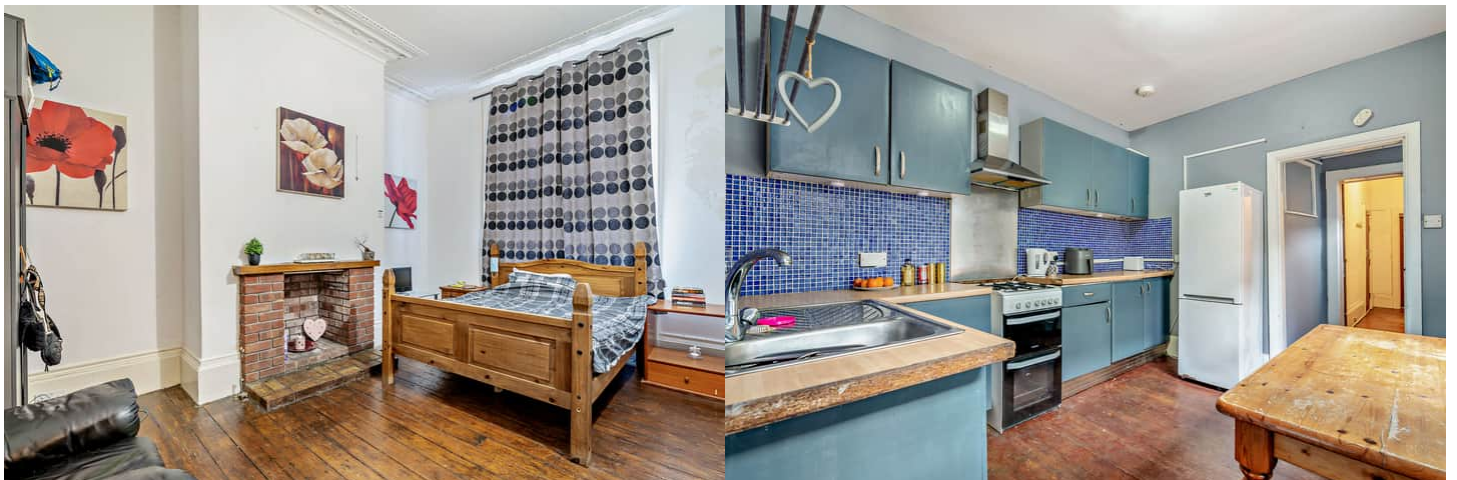
The property has an HMO license for 10 occupants.

The council tax band is D.

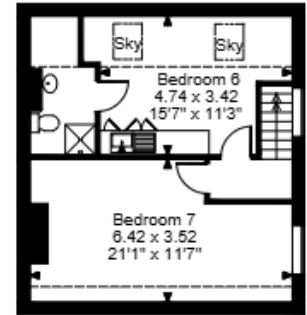
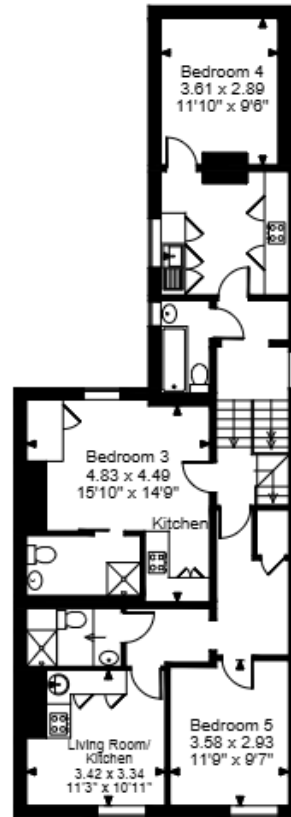
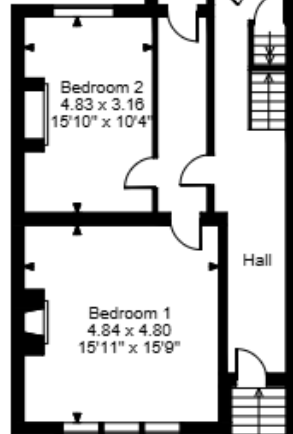
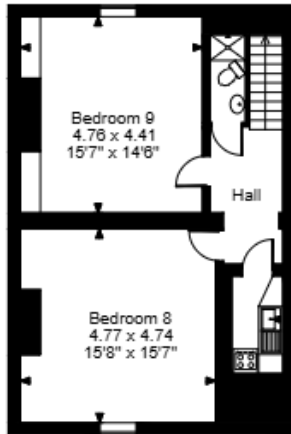
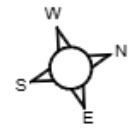
The interior of this property comprises a spacious fitted kitchen and 2 bedrooms on the ground floor. The first floor consists of the living/dining room area as well as the kitchen, as well as 3 bedrooms. The second floor consists of 2 bedrooms, and the basement containing 2 bedrooms.

Located in the popular town of Halifax, the property is close to a range of amenities, including shops, supermarkets, restaurants and pubs. Excellent transport connections can be found from Halifax train station, various bus routes and the A629.

This exciting opportunity should not be missed. All enquiries can be made through Bettermove.



Savile Park Street, Halifax
Approximate Gross Internal Area
3005 Sq Ft/279 Sq M

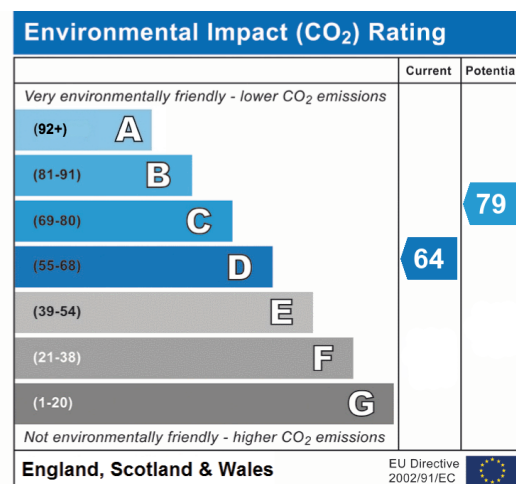
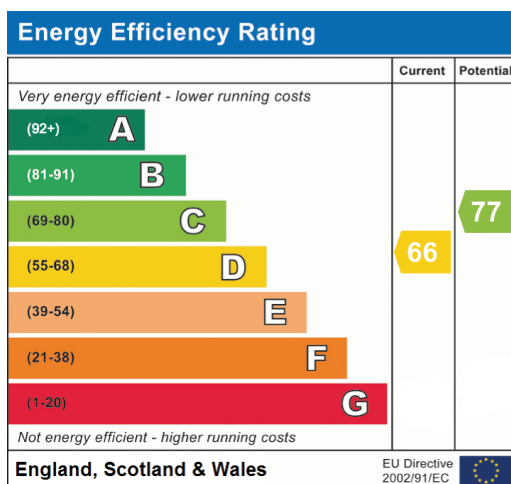


FOR ILLUSTRATIVE PURPOSES ONLY - NOT TO SCALE

The position & size of doors, windows, appliances and other features are approximate only.

□ □ □ Denotes restricted head height

© ehouse. Unauthorised reproduction prohibited. Drawing ref. dig/8672620/SMA





20-22 Bridge End, Leeds, LS1 4DJ
t: 0330 004 0050 e: hello@bettermove.co.uk
www.bettermove.co.uk