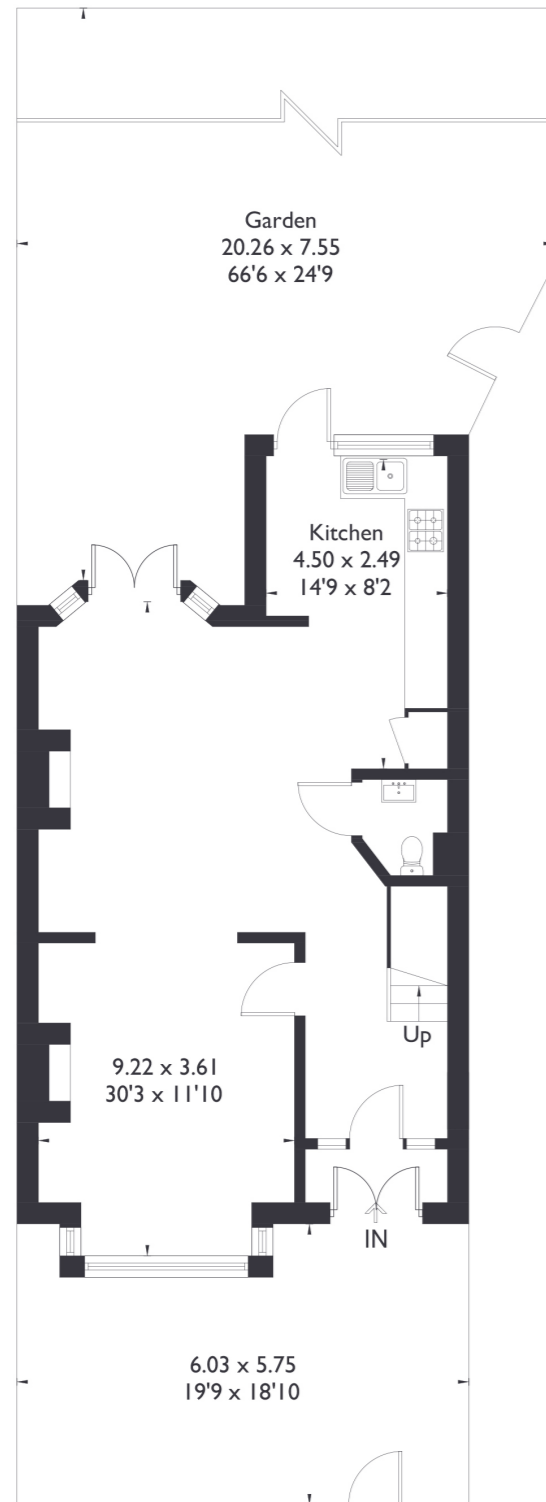
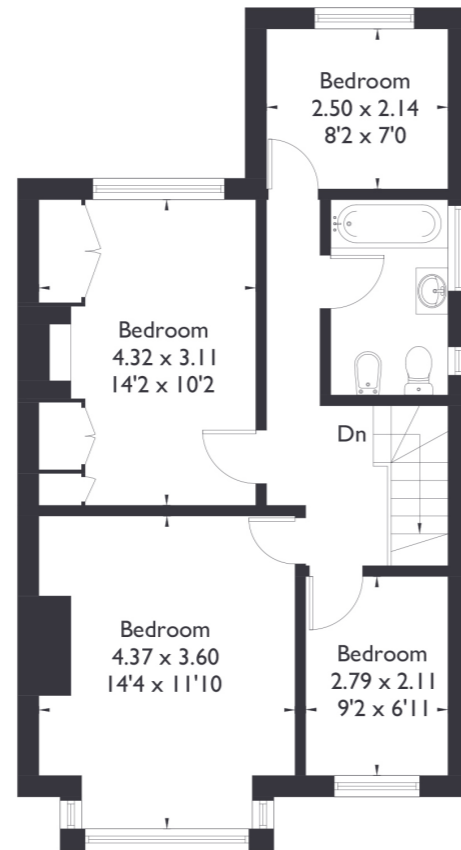


**Claremont Road, W13**

Approximate Floor Area = 109.9 sq m / 1183 sq ft



Ground Floor



First Floor



4 BEDROOM HOUSE

**Claremont Road, W13**

£950,000

Discover this delightful four bedroom home, complete with a stylish upstairs bathroom and a convenient downstairs W/C. The property features a bright reception room that seamlessly flows into the dining area, as well as a well appointed kitchen that opens onto a spacious west facing garden perfect for outdoor activities and relaxation.

FEATURES

- Four Bedrooms
- One Bathroom/Downstairs W/C
- Kitchen/Dining
- Large Reception
- West Ealing Station
- Potential To Extend (STPP)
- EPC Rating D



4 BEDROOM HOUSE

## Claremont Road, W13

Upstairs, you'll find two generously sized double bedrooms, along with two single bedrooms, and a large family bathroom.

Located just a 10 minute walk from Pitshanger Lane, you'll enjoy easy access to an array of popular shops, cafes, and local amenities. This property offers excellent access to the A40, providing a direct route into Central London by car. It is also ideally situated for easy access to Ealing Broadway and West Ealing, whether by a short walk or via convenient bus routes.

